



Operating System Installation Guide

Version 1.4.0

Contents

Copyright Notice	3
Document Revision History	4
Installation	5
Preparations	5
Network	5
Port Usage	5
System Requirements	5
Supported Platforms	5
Flash USB with ISO	6
Boot with USB	12
Static IP	26
Root credentials	32

Copyright Notice

No part of this document may be reproduced or transmitted in any form or by any means, electronic or mechanical, for any purpose, without express written permission. Under the law, reproducing includes translating into another language or format.

The software is protected by United States copyright laws and international treaty provision. Therefore, you must treat the software like any other copyrighted material (e.g. a book or sound recording).

Document Revision History

Wednesday, July 18th, 2017

- Initial release of documentation.

Wednesday, April 10th, 2019

- Flash USB instructions

Installation

Preparations

To install the band operating system, you must have:

- Intel Compute Stick, model STK1AW32SC
- 32 GB, EFI-formatted USB drive containing the Band OS installer

Network

Port Usage

Protocol	Port	Direction	Purpose
HTTPS	443	Outbound	HTTPS Content
HTTP	80	Outbound	HTTP Content
SSH	22	Inbound	Device administration

System Requirements

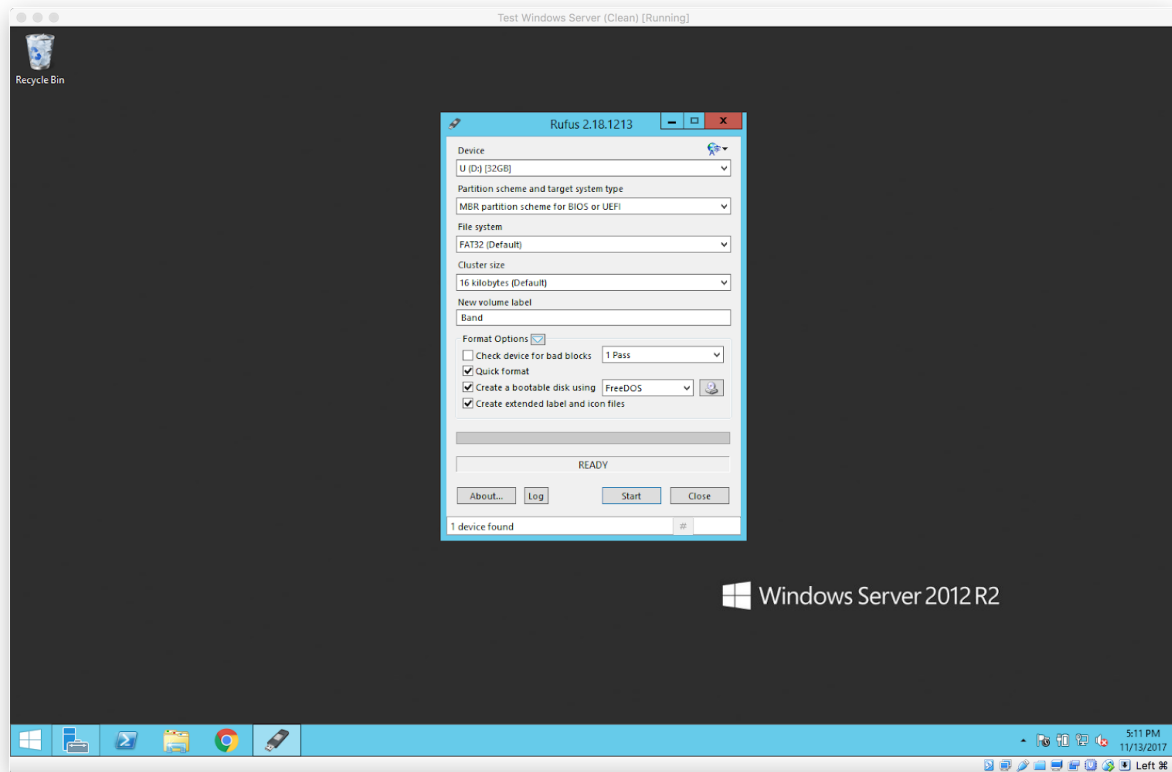
Supported Platforms

- Intel Compute Stick, model STK1AW32SC

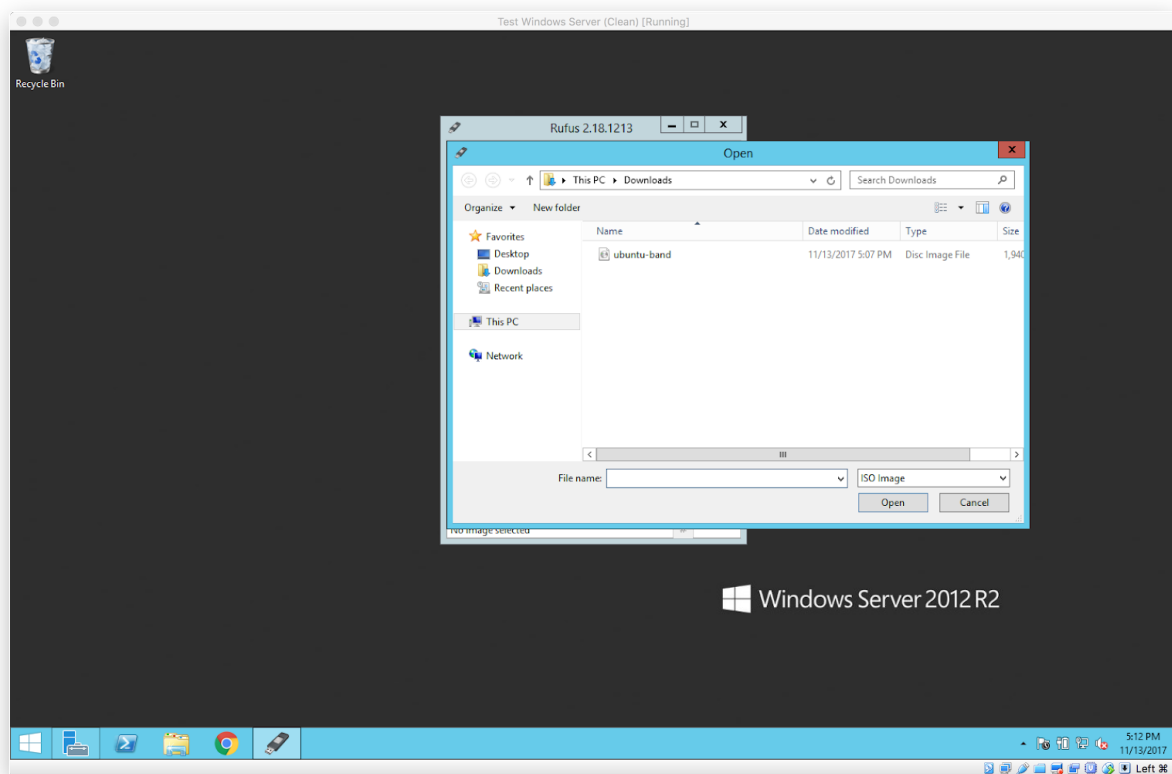
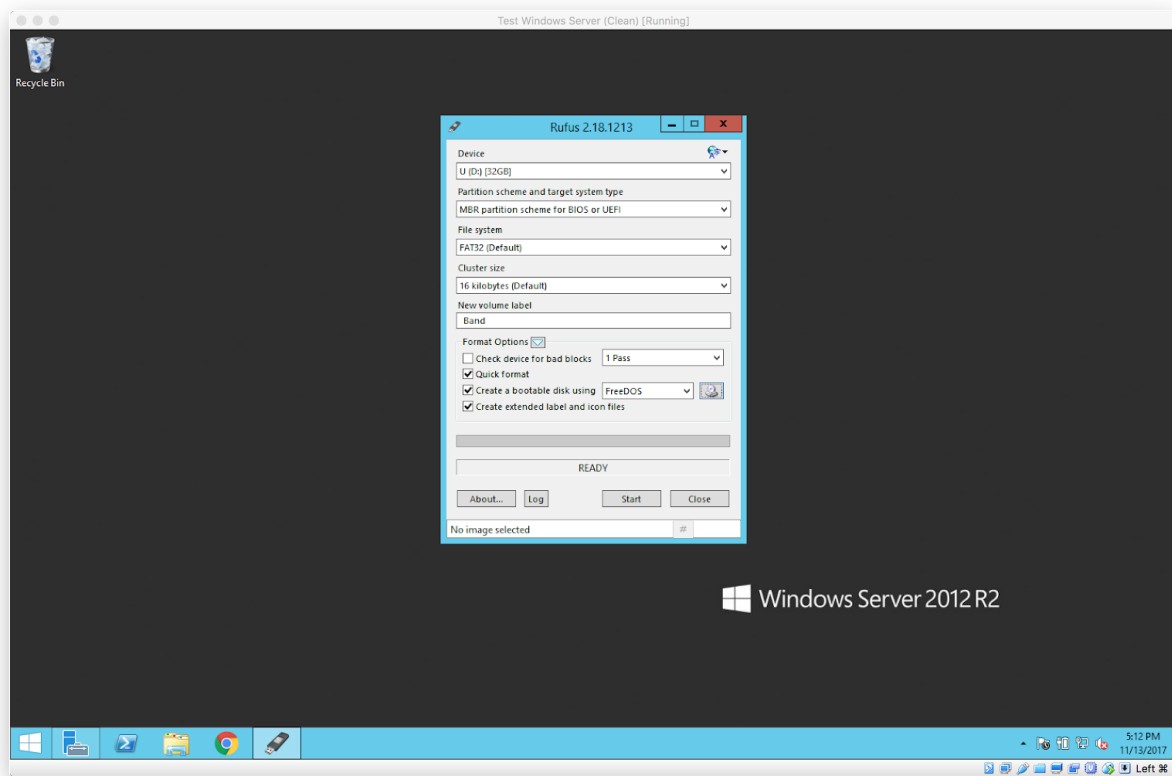
Flash USB with ISO

Plug the USB drive into a Windows computer, download and run the [Rufus](https://rufus.akeo.ie/downloads/rufus-2.18.exe) application, and select the USB drive from the the **Devices** menu.

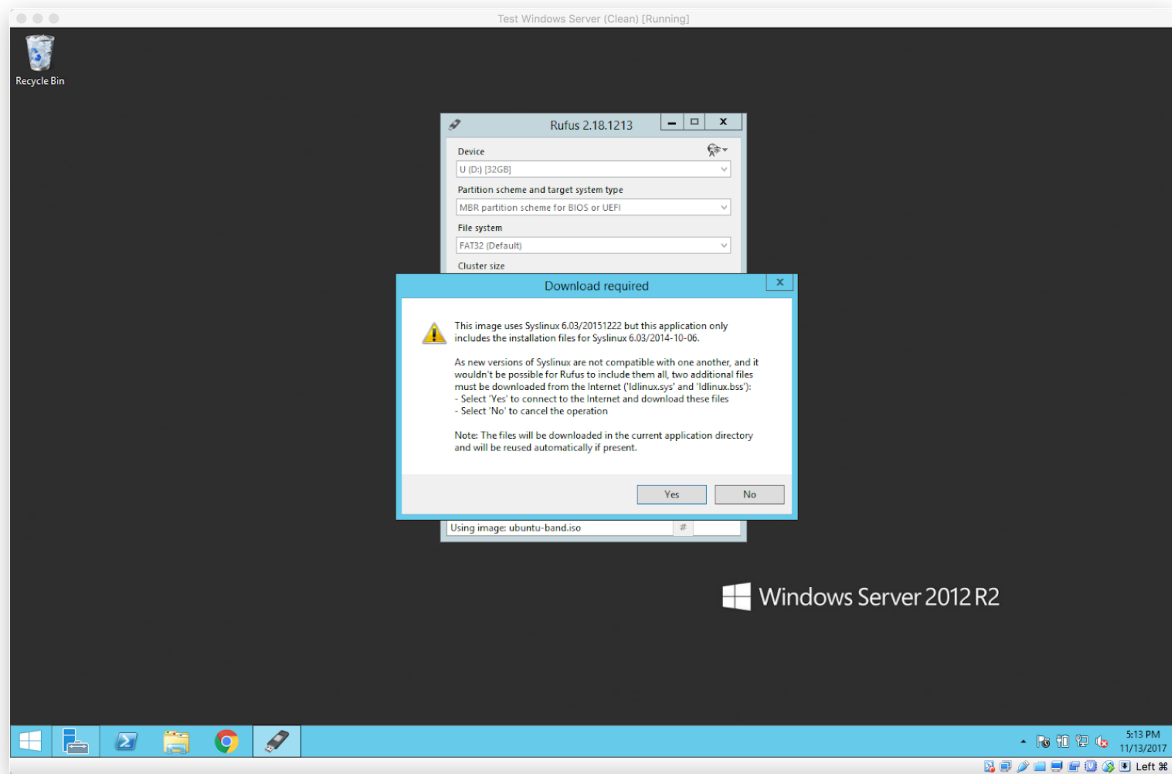
<https://rufus.akeo.ie/downloads/rufus-2.18.exe>



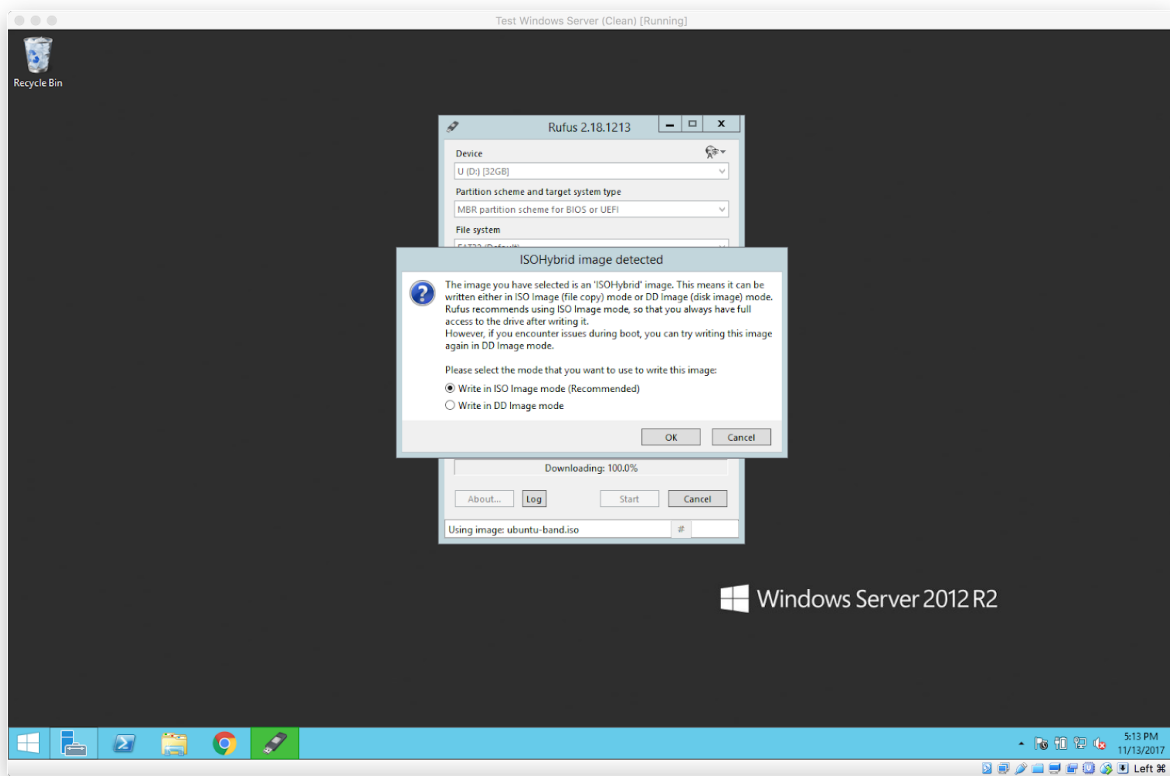
Click on the **Disk** icon to select the Band OS .ISO file.



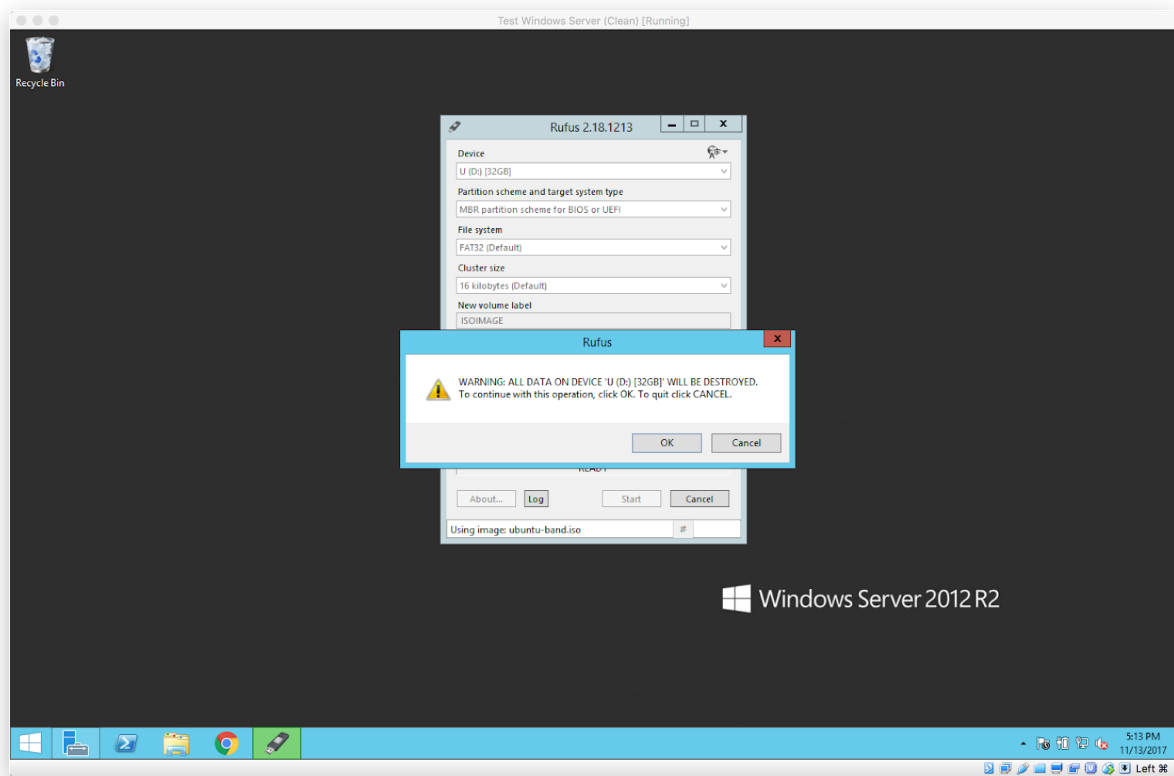
Click the **Start** button to start writing Band OS .ISO to the USB drive. If prompted to download libraries from internet, click **Yes**.



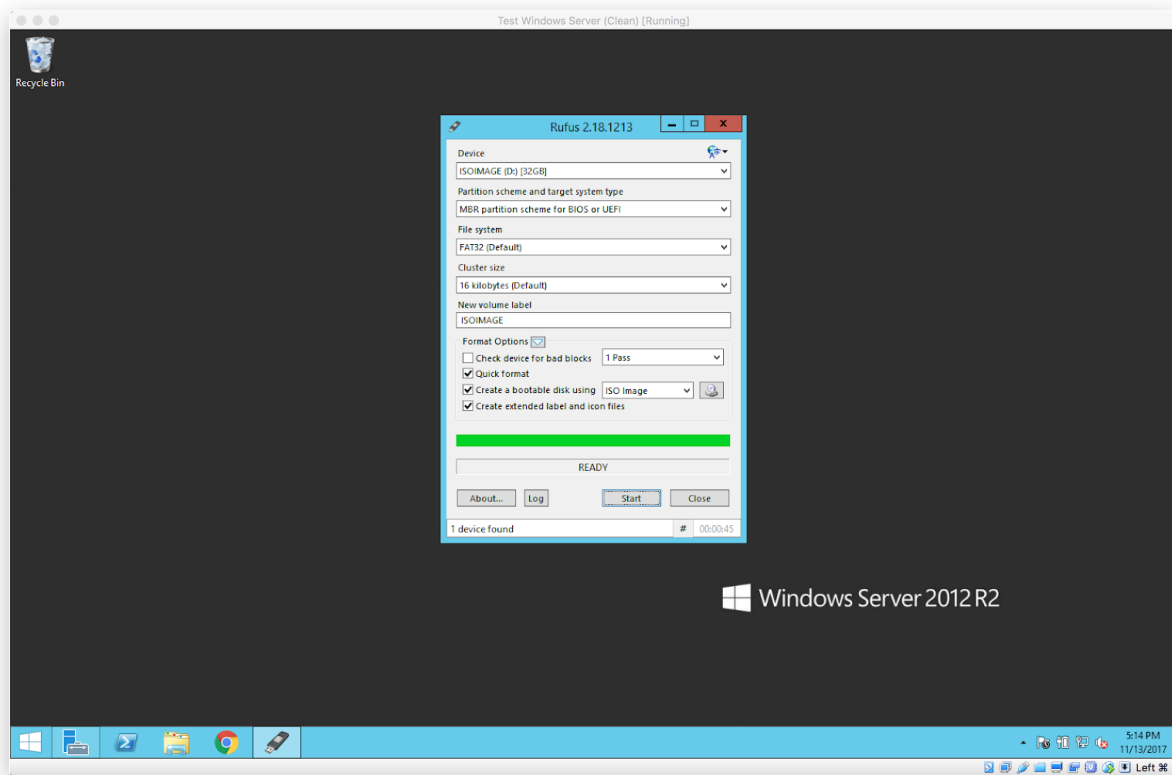
From the **ISO/Hybrid Image Detected** prompt, select **ISO** and click **OK**.



From the data warning prompt, click **OK**.

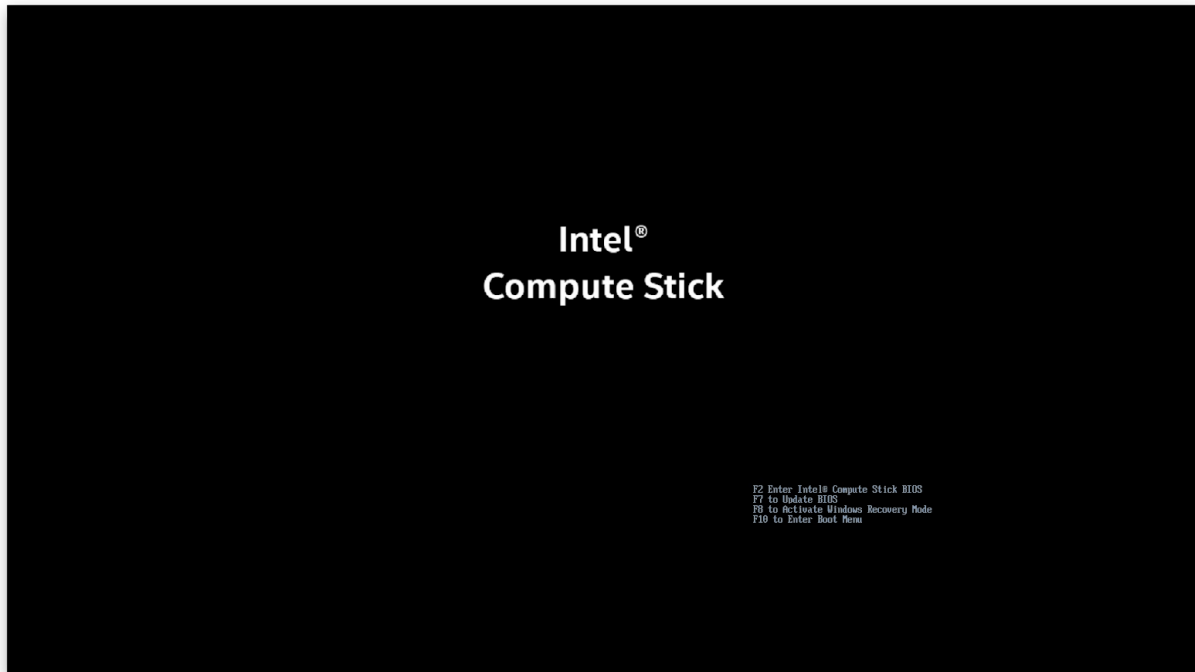


It takes 1-2 mins to complete writing. When the progress bar reaches 100%, unplug the USB drive and plug it into Intel Compute Stick.

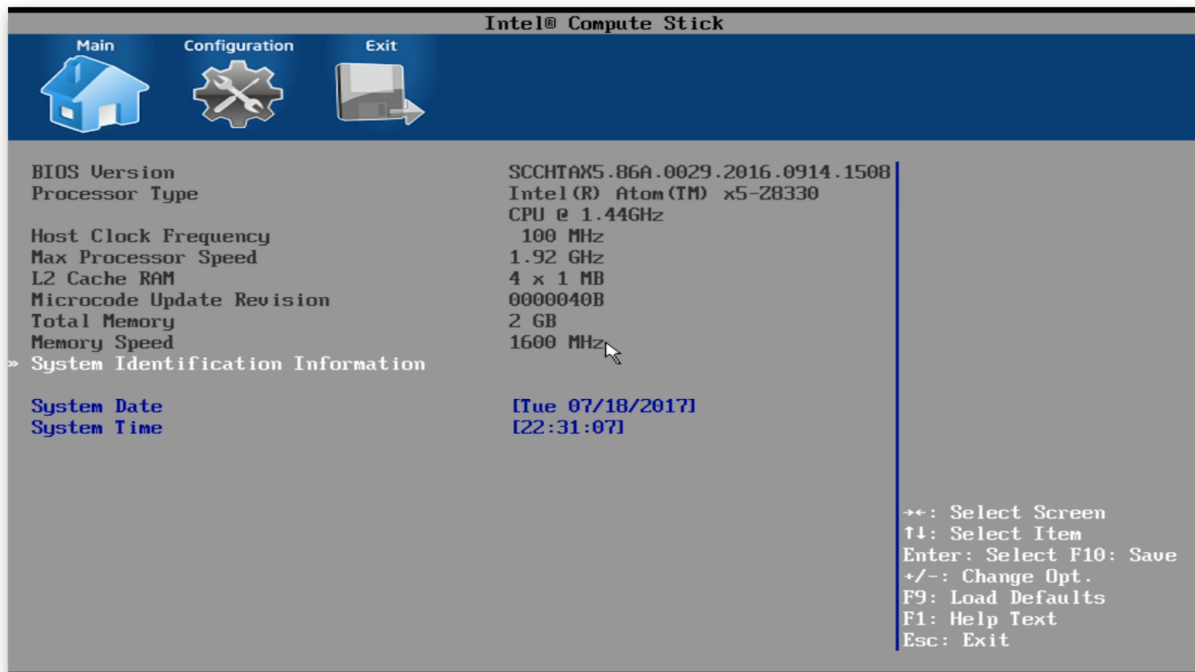


Boot with USB

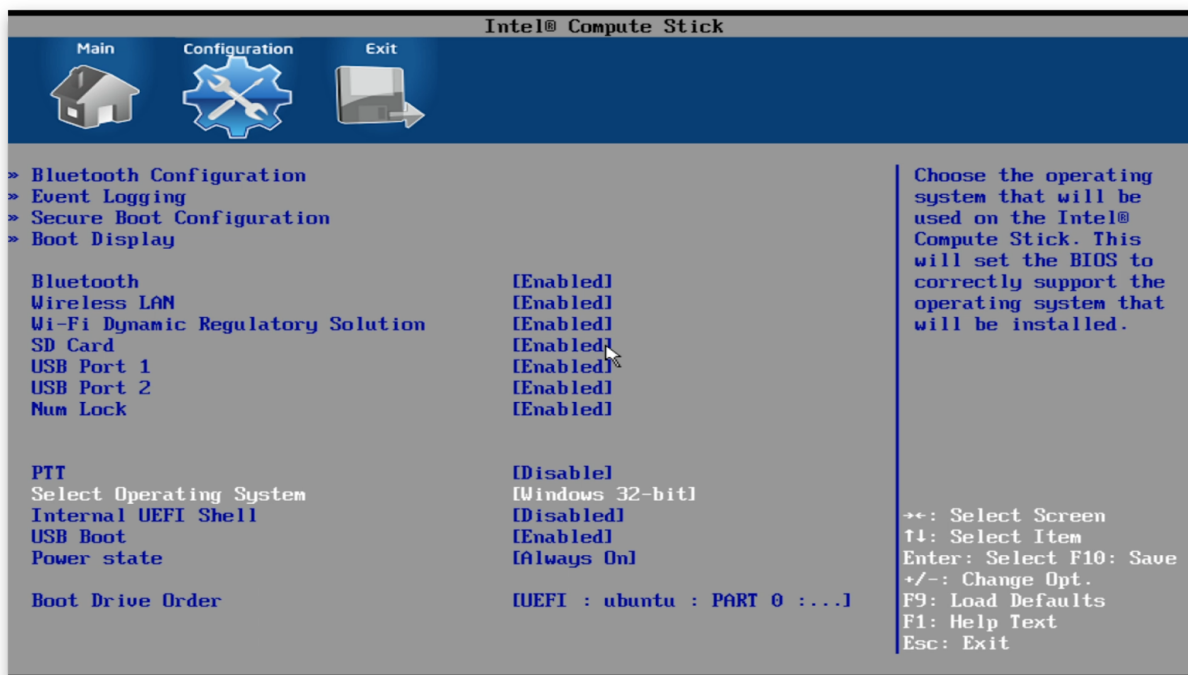
Connect the STK1AW32SC to an HDMI display, keyboard, and the USB drive. Power on the device, and during the loading prompt, press **F2** to enter the **Intel Compute Stick BIOS**.



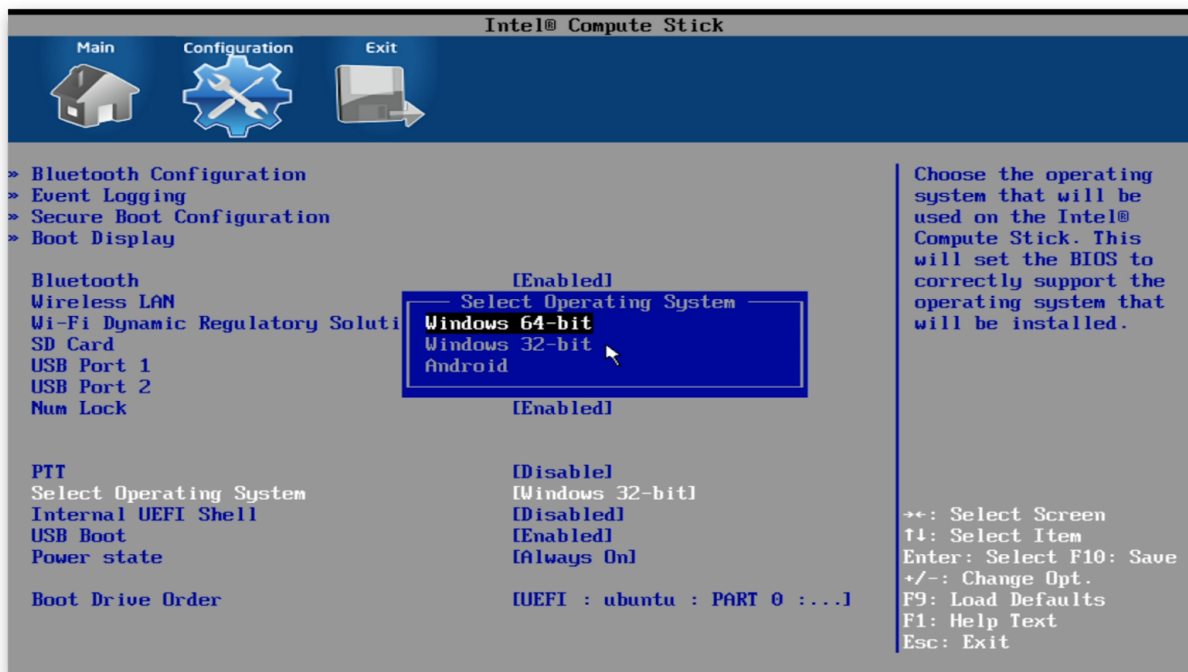
From the BIOS **Main** screen, press → to page right to the BIOS **Configuration** screen.



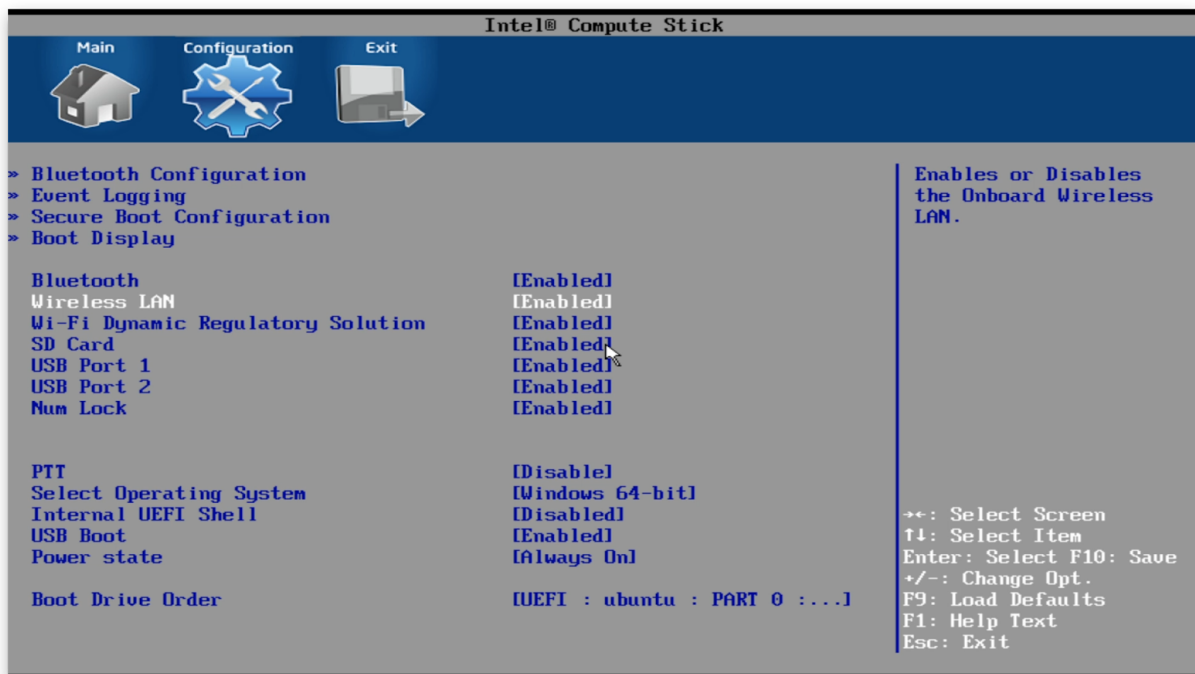
From the BIOS **Configuration** screen, press **↓** to reach **Select Operating System** and press **Enter**.



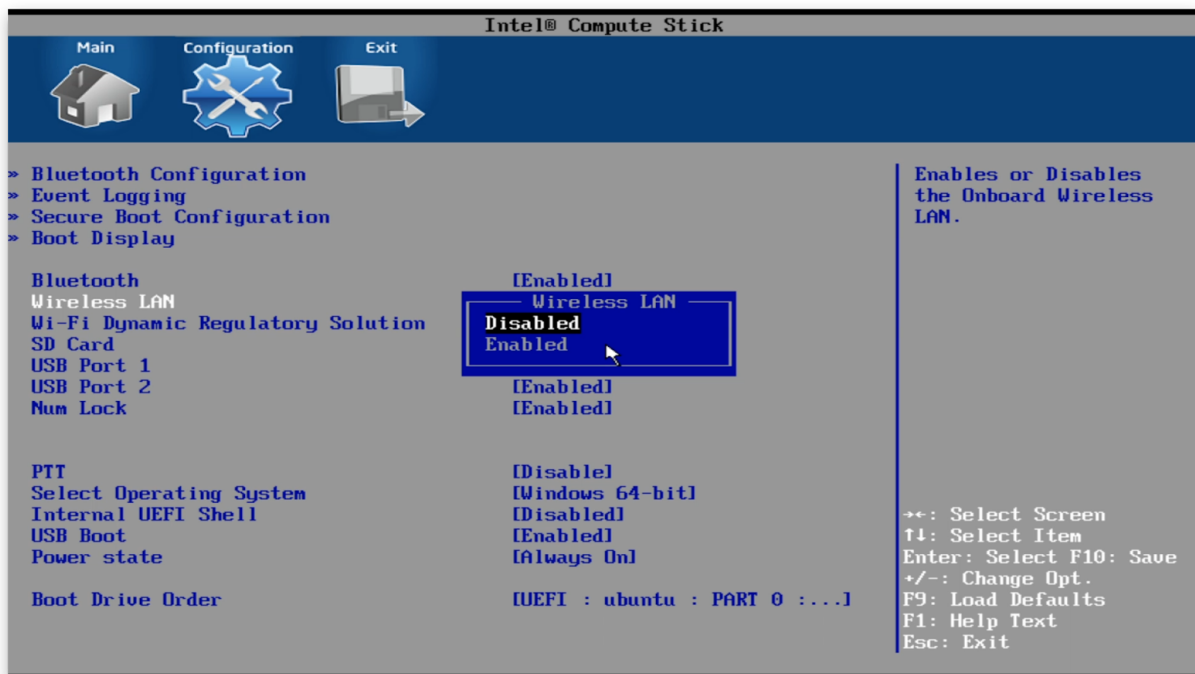
From the **Select Operating System** dialog, press **↑** to reach **Windows 64-bit** and press **Enter**.



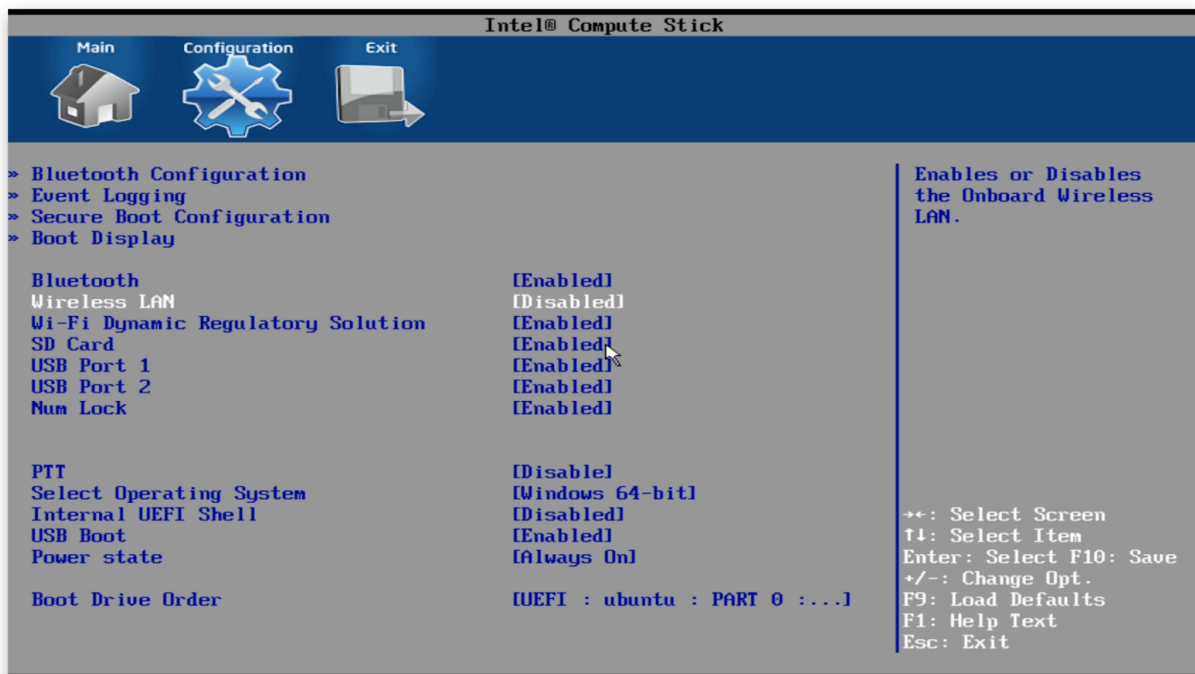
From the BIOS **Configuration** screen, press **↑** to reach **Wireless LAN** and press **Enter**.



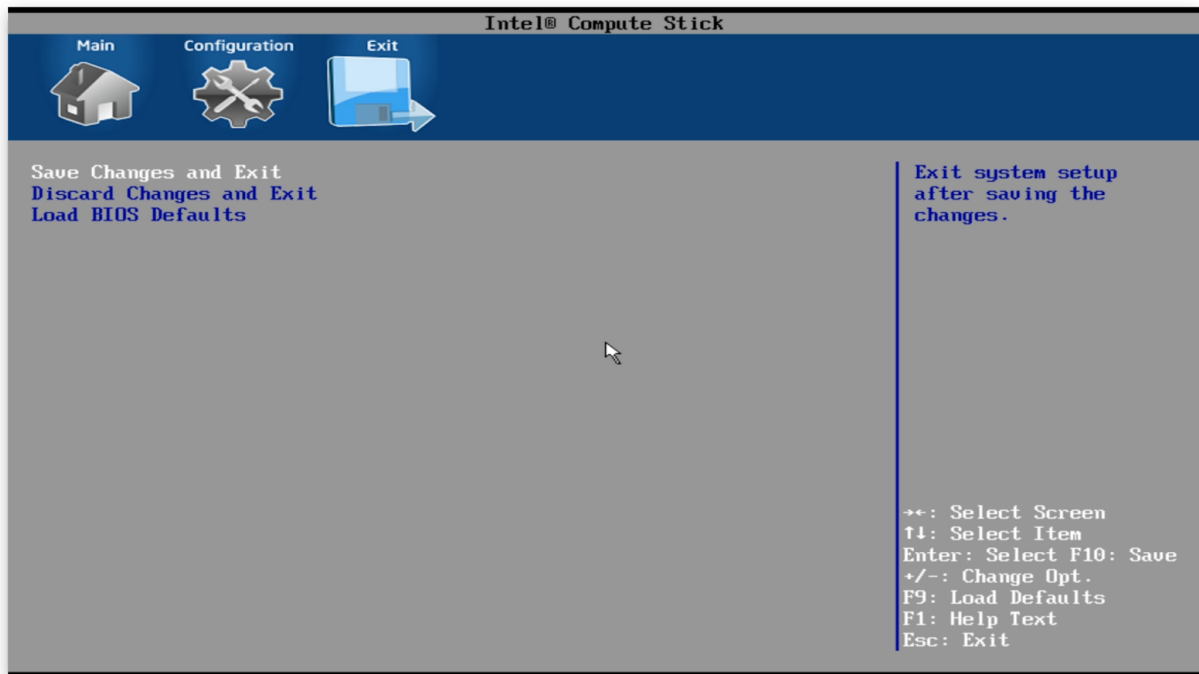
From the **Wireless LAN** dialog, press **↑** to reach **Disabled** and press **Enter**.



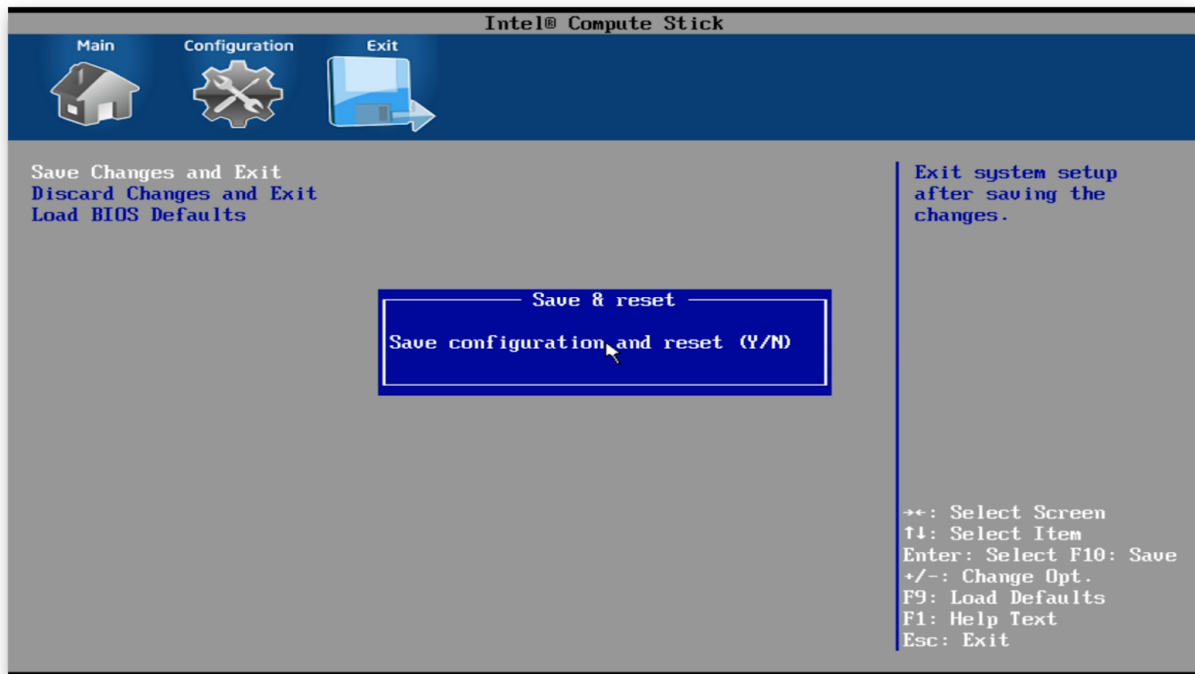
From the BIOS **Configuration** screen, press → to page right to the BIOS **Exit** screen.



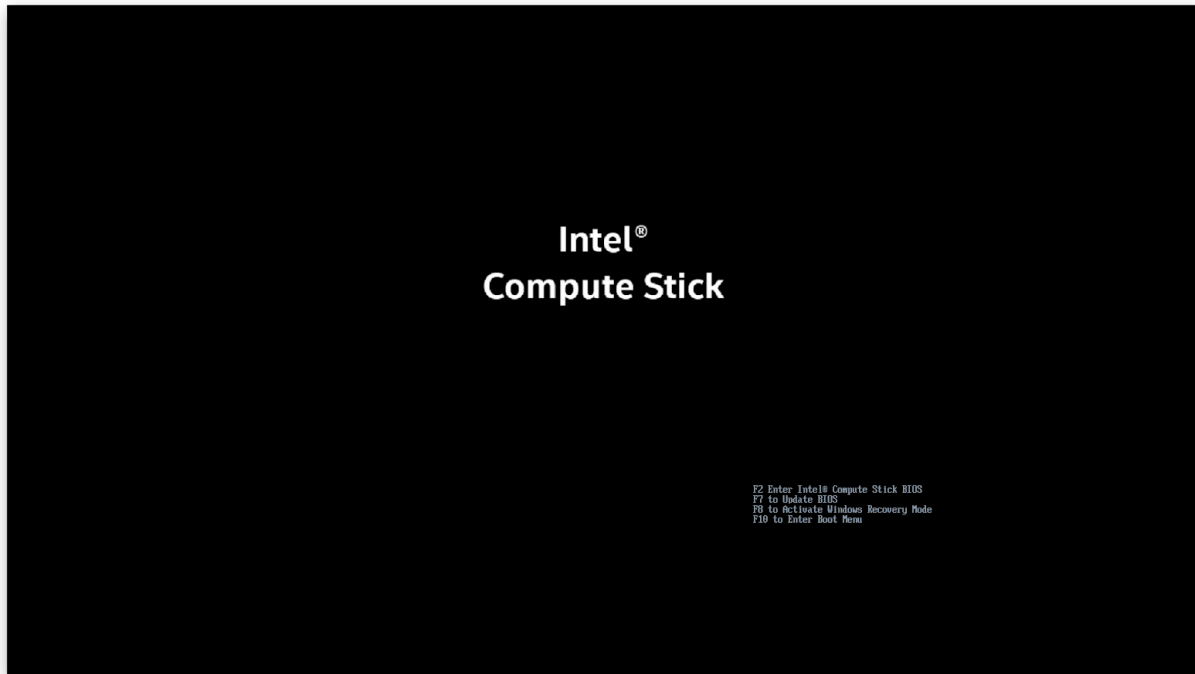
From the BIOS **Exit** screen, press **Enter** to **Save Changes and Exit**.



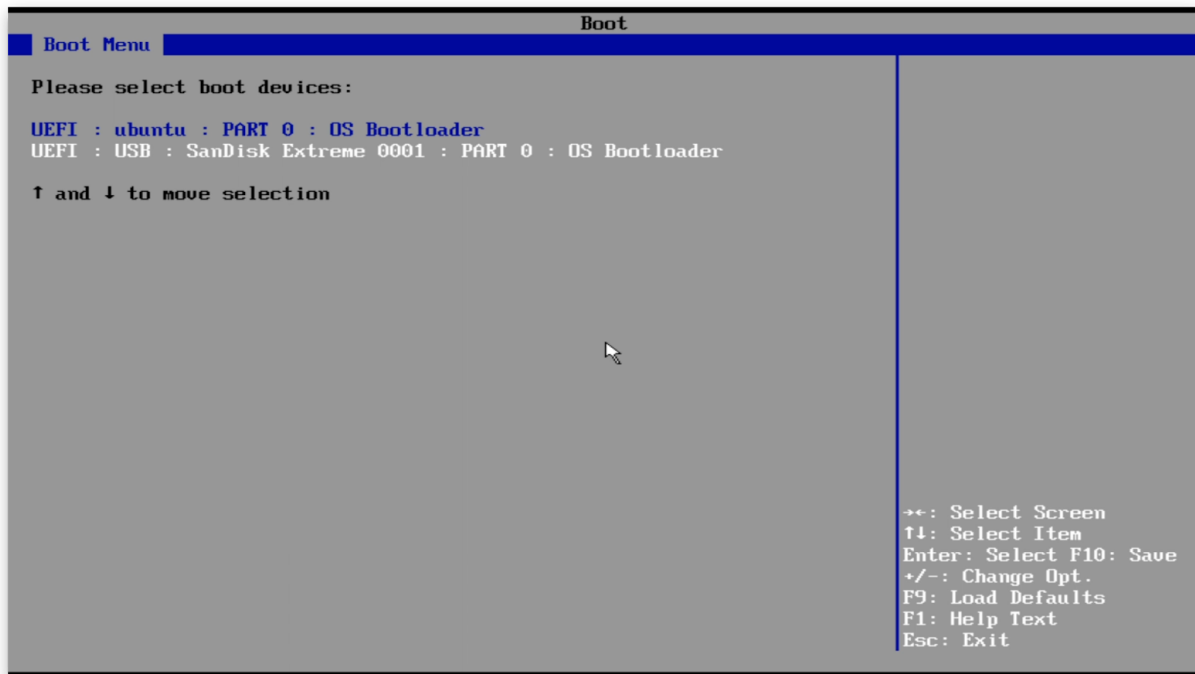
From the **Save & Reset** dialog press **Y** to save the configuration and reset.



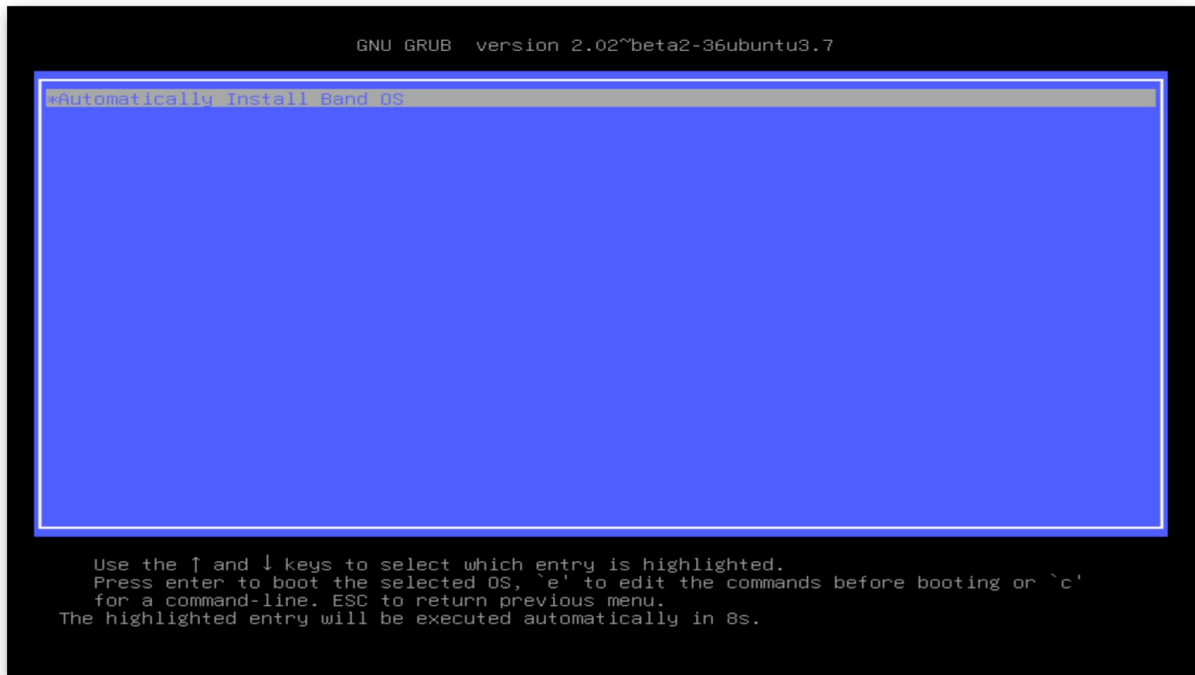
When the STK1AW32SC reboots, press **F10** to **Enter Boot Menu**.



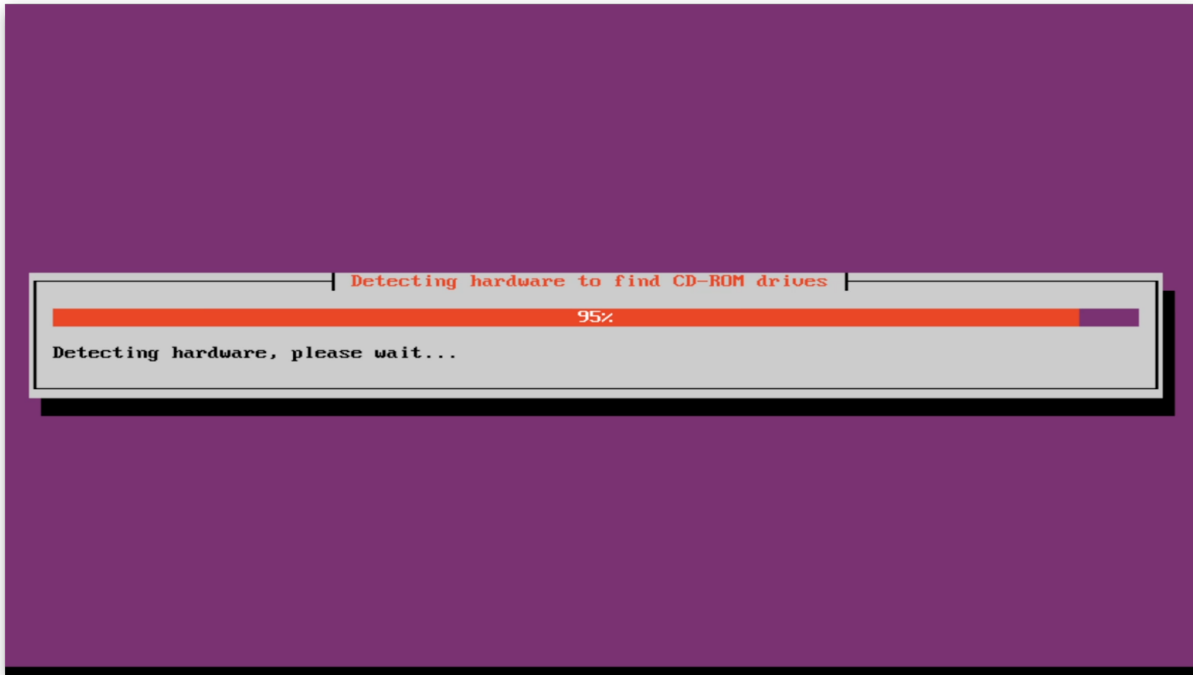
From the **Boot Menu** screen, press **↓** to reach **UEFI : USB : ...** and press **Enter**.



The STK1AW32SC will reboot into a menu and choose **Automatically Install Band OS** after 10 seconds.




Band OS will install automatically. User input is not required. The installation process takes about five minutes.



When the install is complete, press the power button for five seconds to power down the device.

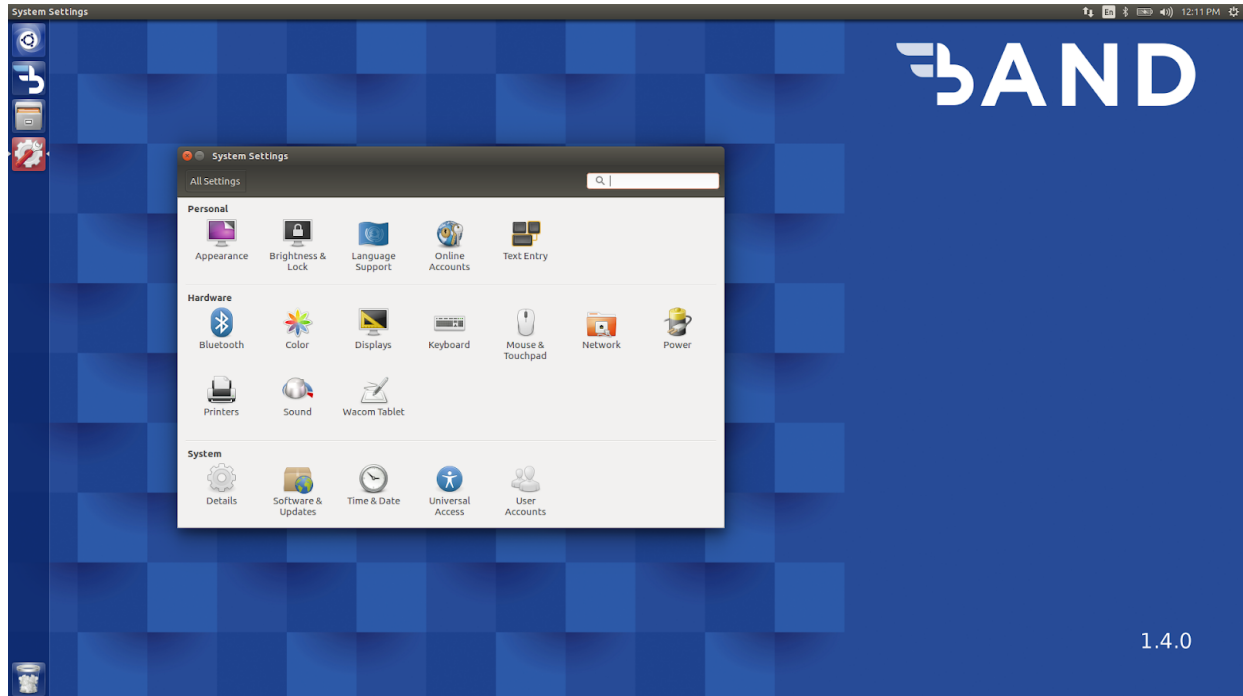
Remove the USB drive and plug in the USB network adapter. Press the power button briefly to turn on the device.



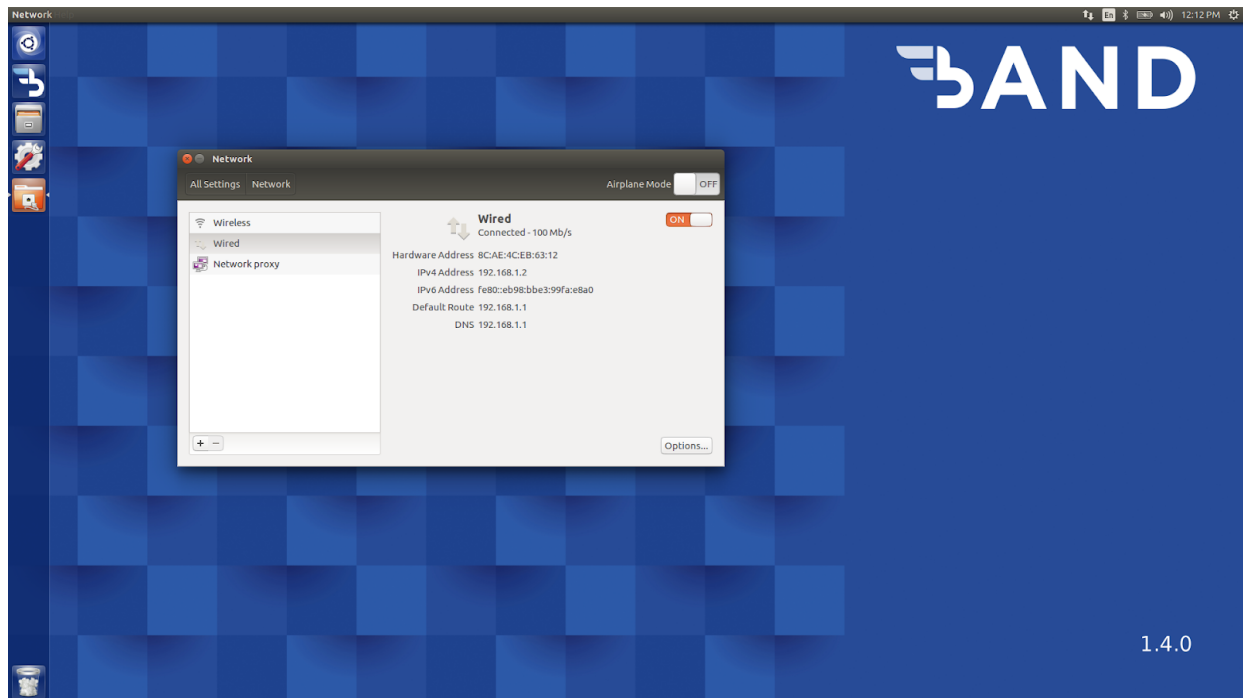
```
Sent SIGKILL to all processes
Requesting system reboot
```

Static IP

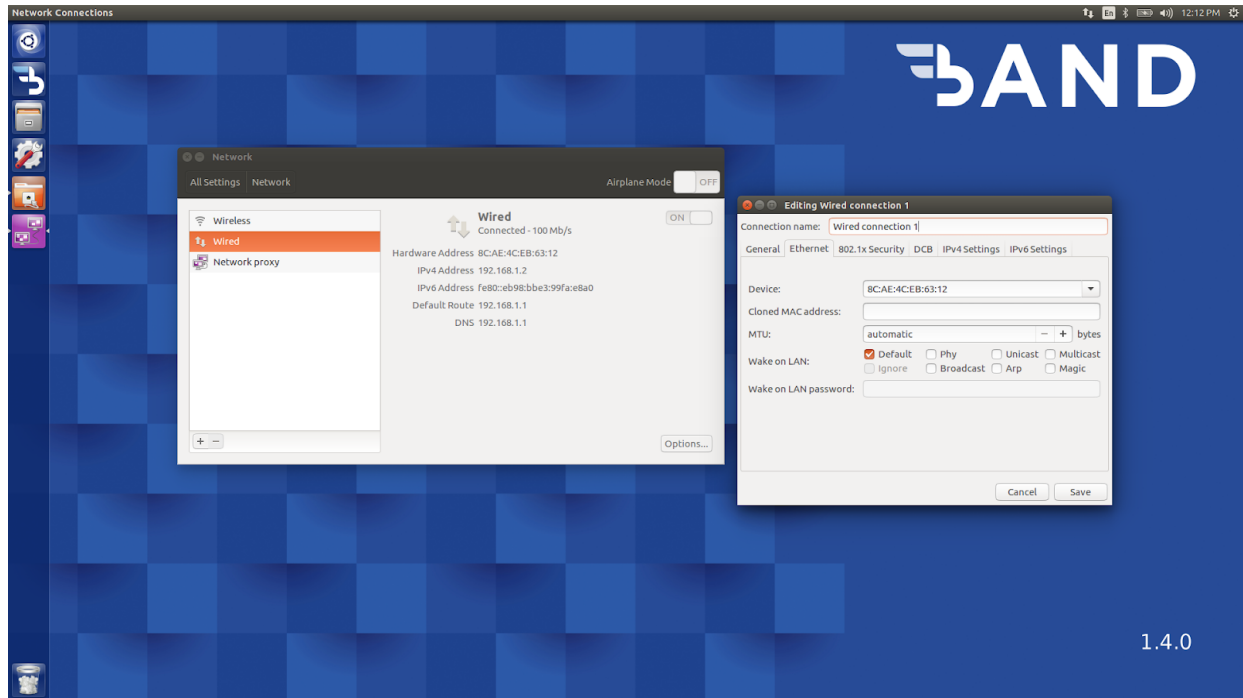
For **System Settings** click on the icon at the top left corner of the screen, right above the band icon and search for system settings.



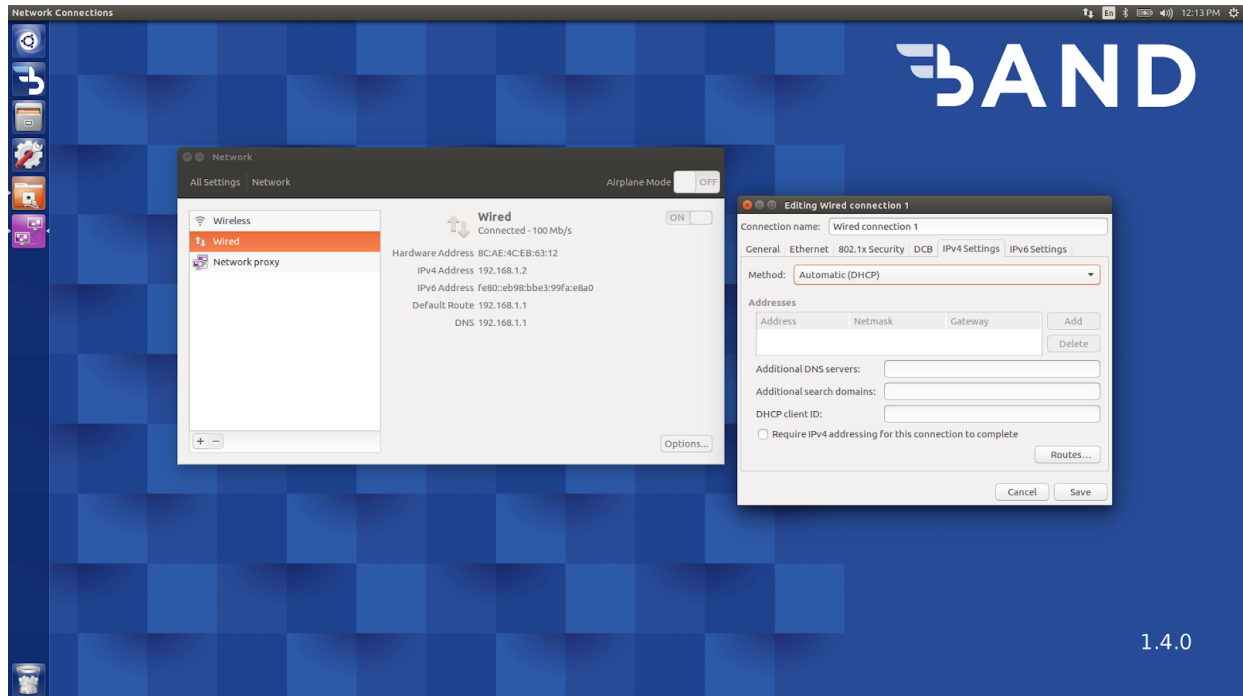
Click on the **Network** icon under **Hardware** and select **Wired** to access the ethernet configuration.



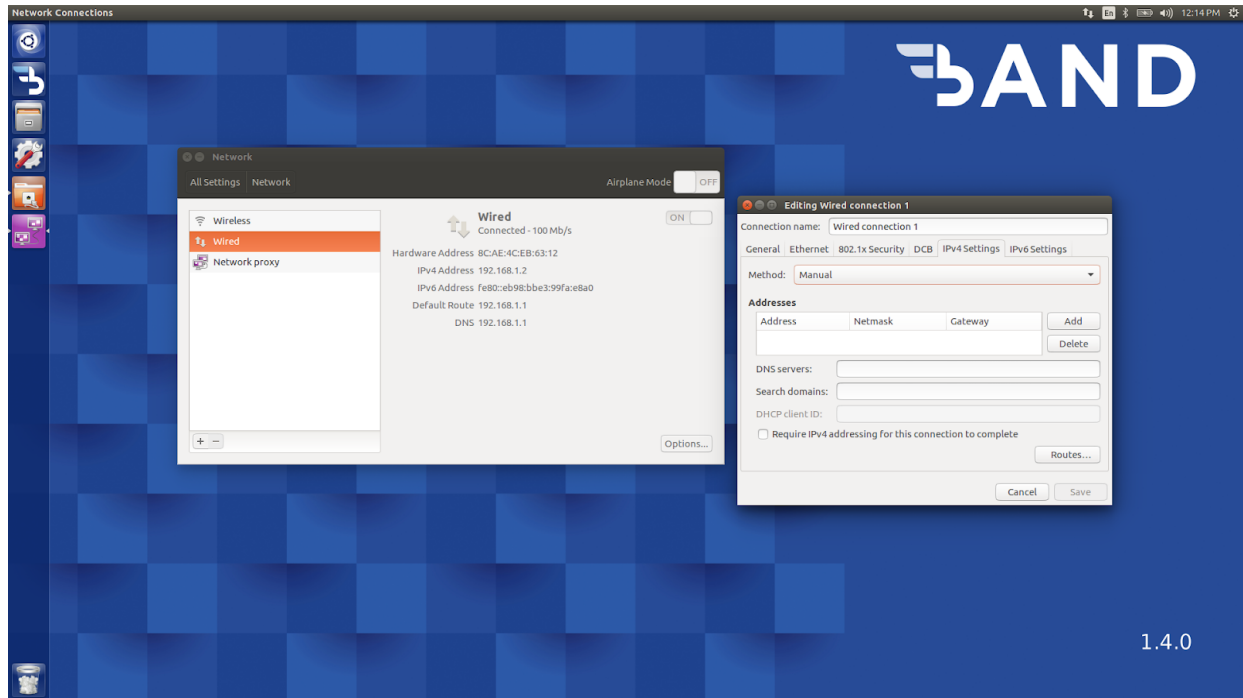
From **Wired** click on the **Options...** button to access the wired network configuration.



From **Edit Wired connection 1** dialog click on **IPv4 Settings** tab to access the IPv4 configuration.



Change the **Method** from **Automatic (DHCP)** → **Manual** to enable static IP address configuration.

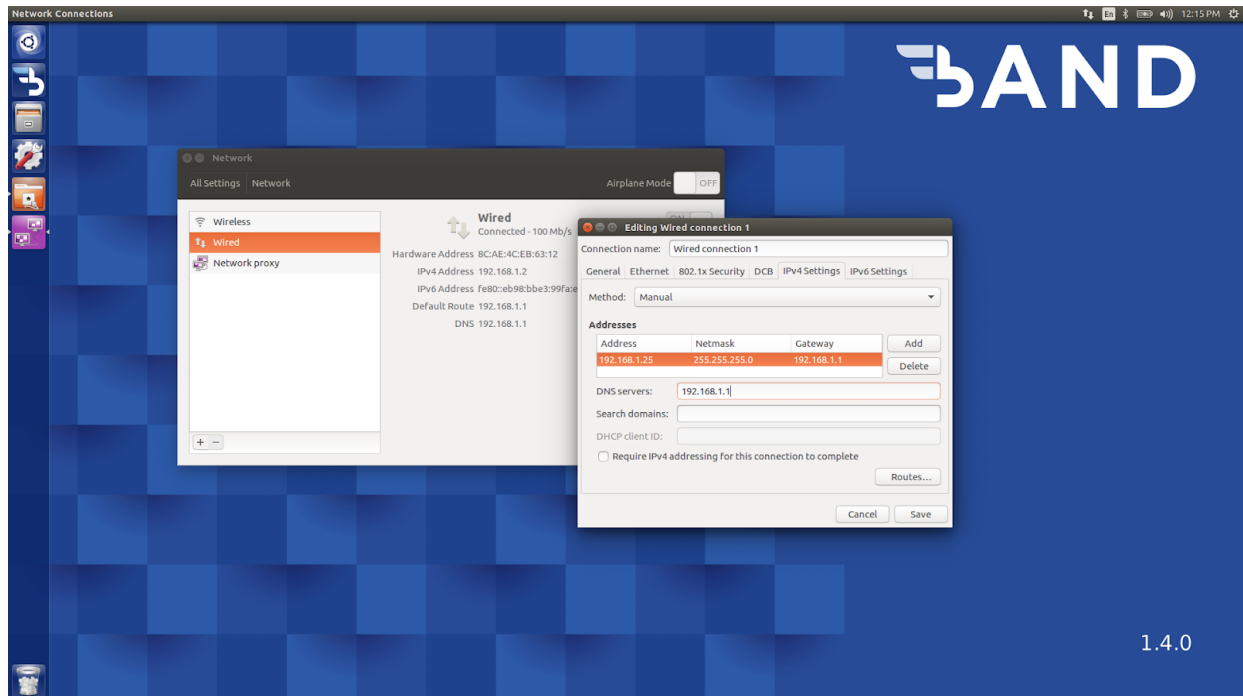


Click on the **Add** button under **Addresses** on IPv4 Settings tab and enter the following,

- Address
- Netmask
- Gateway

Enter the IP address of the DNS servers in the field next to label **DNS Servers**. If there are multiple DNS servers, enter them separated by a comma.

192.168.1.1,1.1.1.1,1.0.0.1



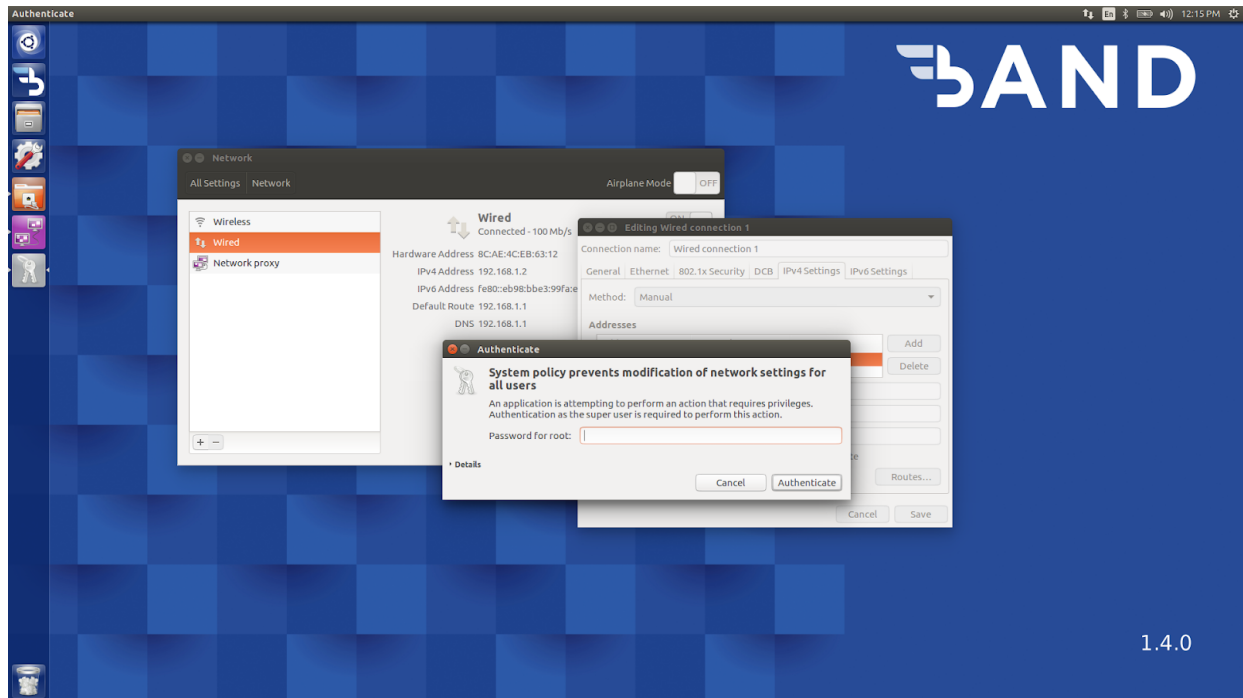
Click on the **Save** button to save the IPv4 configuration. Band will show an **Authentication** prompt requesting the password for **root** user.

Root credentials

Username : **root**

Password : **bandpassword**

Enter **bandpassword** in the field next to **Password for root** and click on **Authenticate** button.



Enable the previously configured static IP address by resetting the Wired adapter. **Toggle** the **on/off** switch on the Wired configuration tab.

