



# Software Installation Guide

Version 1.8.0

# Contents

<b>Copyright Notice</b>	<b>3</b>
<b>Document Revision History</b>	<b>4</b>
<b>Client Skin Pack Addition</b>	<b>5</b>
Preparation	5
Backup	5
Installer	6
<b>Web Interface</b>	<b>10</b>
Preparation	10
Installer	11

## Copyright Notice

No part of this document may be reproduced or transmitted in any form or by any means, electronic or mechanical, for any purpose, without express written permission. Under the law, reproducing includes translating into another language or format.

The software is protected by United States copyright laws and international treaty provision. Therefore, you must treat the software like any other copyrighted material (e.g. a book or sound recording).

## Document Revision History

### **February 11th, 2017**

- Initial release of documentation.

### **January 30th, 2019**

- Web Interface included in Beam Cluster installation from version 1.6.2 and later.

# Client Skin Pack Addition

## Preparation

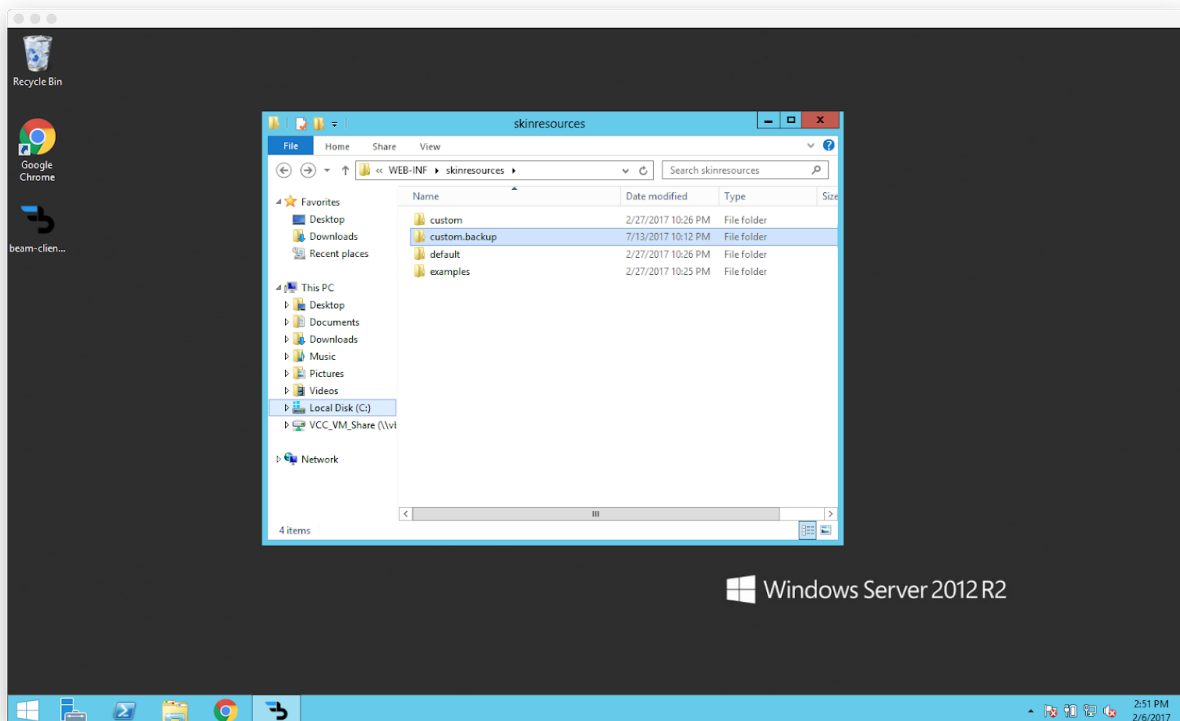
To set install the Beam Client Skin Pack Addition, you must have:

- Access to the Qumu Video Control Center application server
- Ability to update the current skin pack

## Backup

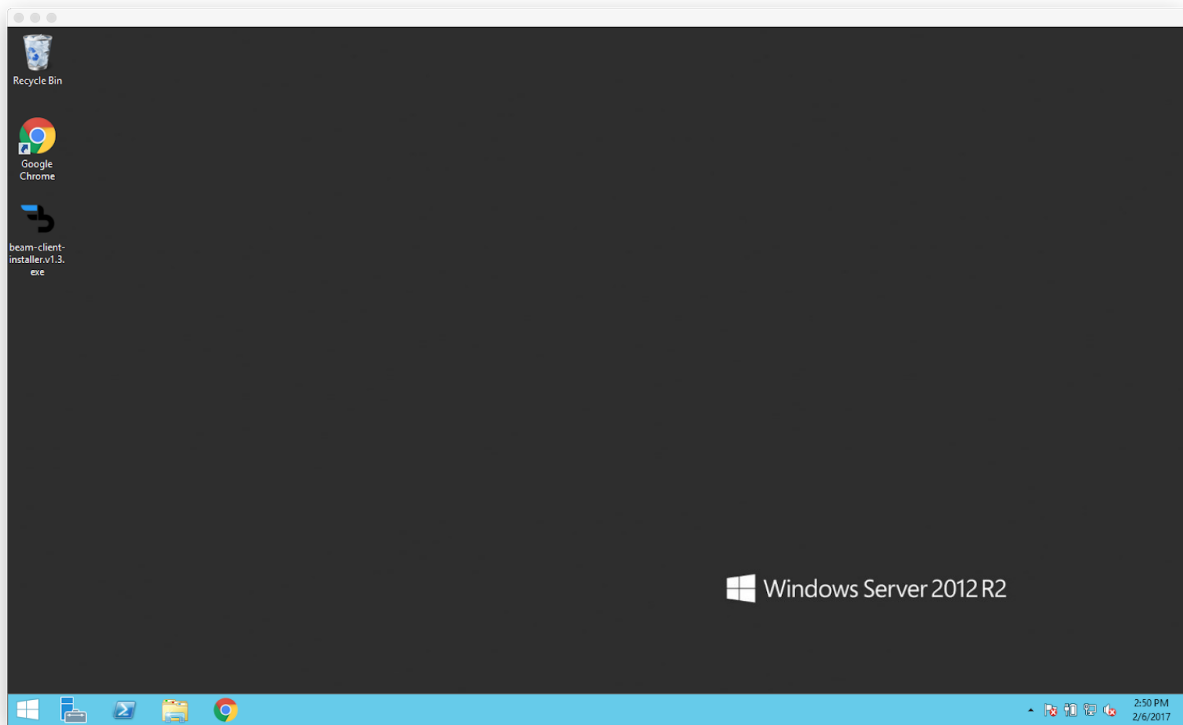
The installer creates a new version of the Qumu skin pack file located at **/js/dojo18/mpi/layers/vp\_program.js**. It is unlikely that your custom skin pack also modifies this file, however it is recommended that you backup your skin pack directory prior to installation. The directory is typically located at:

```
C:\Program Files\Qumu\tomcat\base\webapps\viewerportal\WEB-INF\skinresources\custom
```

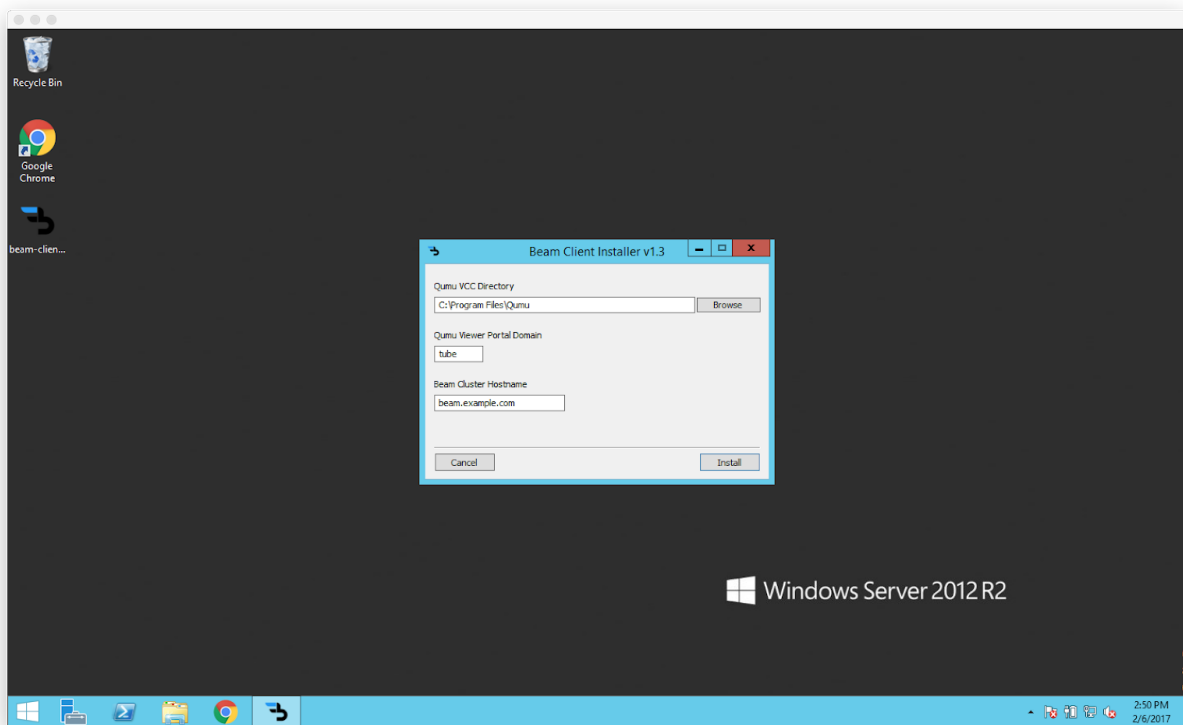


## Installer

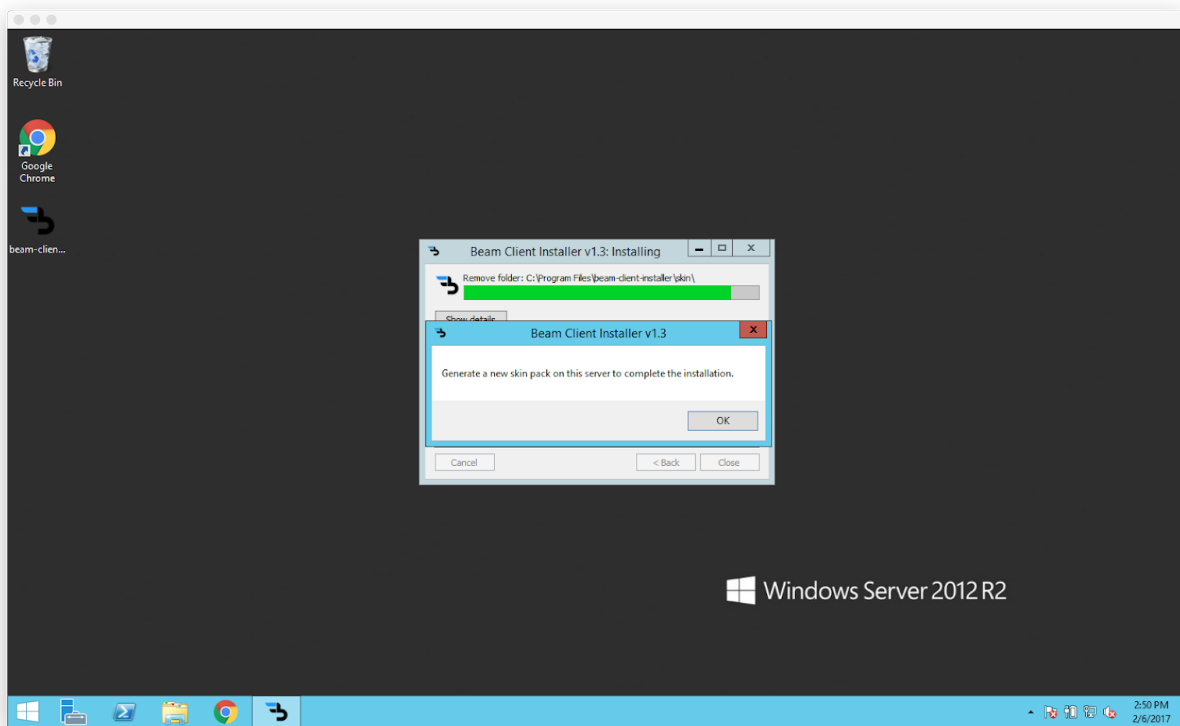
1. Copy the installer file (named **beam-client-installer.v.1.8.0.exe** or similar) to the desktop of the VCC application server.



2. Double-click on the installer file, locate the Qumu VCC directory, enter the Qumu Viewer portal domain, and the Beam Cluster hostname, then click **Install**.



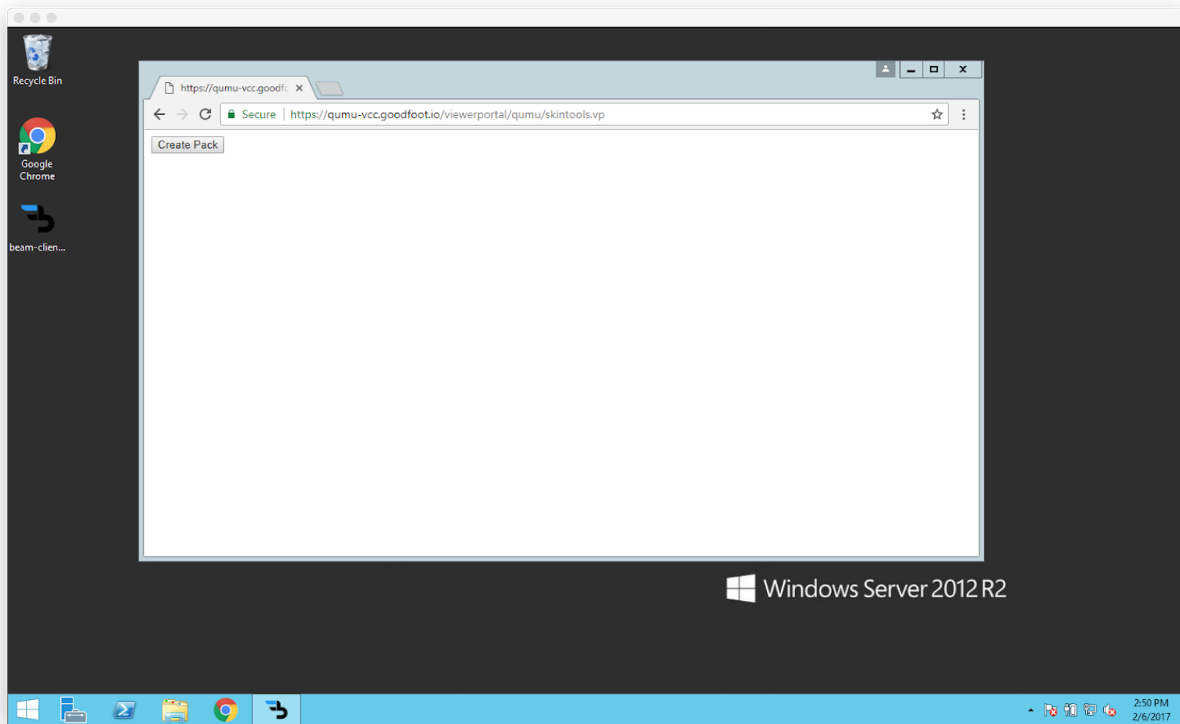
- Click **OK** to confirm the information dialog.





4. Navigate to the skin tools form and create a new skin pack. If the Viewer Portal hostname were **qumu.example.com** and the domain were **tube**, the skin tools URL would be:

`https://qumu.example.com/viewerportal/tube/skintools.vp`



5. Remove the installer file from the Desktop.

# Web Interface

## Preparation

For versions 1.6.2 and later, the Beam Web Interface is packaged with the Beam Cluster installer and no longer needs to be installed separately. Skip the rest of this guide to complete the installation.

For versions 1.6.1 and prior, please continue with the following steps.

To set install the Beam Web Interface, you must have:

- Access to the Qumu Video Control Center web server
- Ability to update Microsoft IIS settings

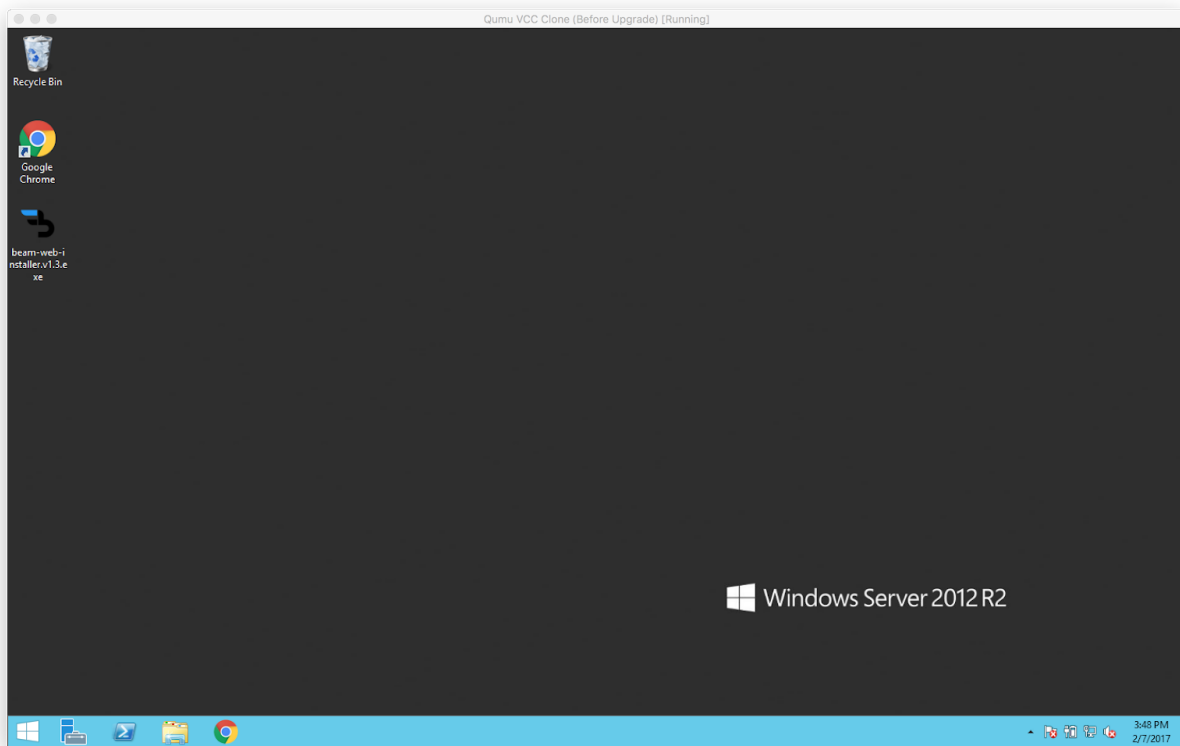
## System Requirements

### Supported Platforms

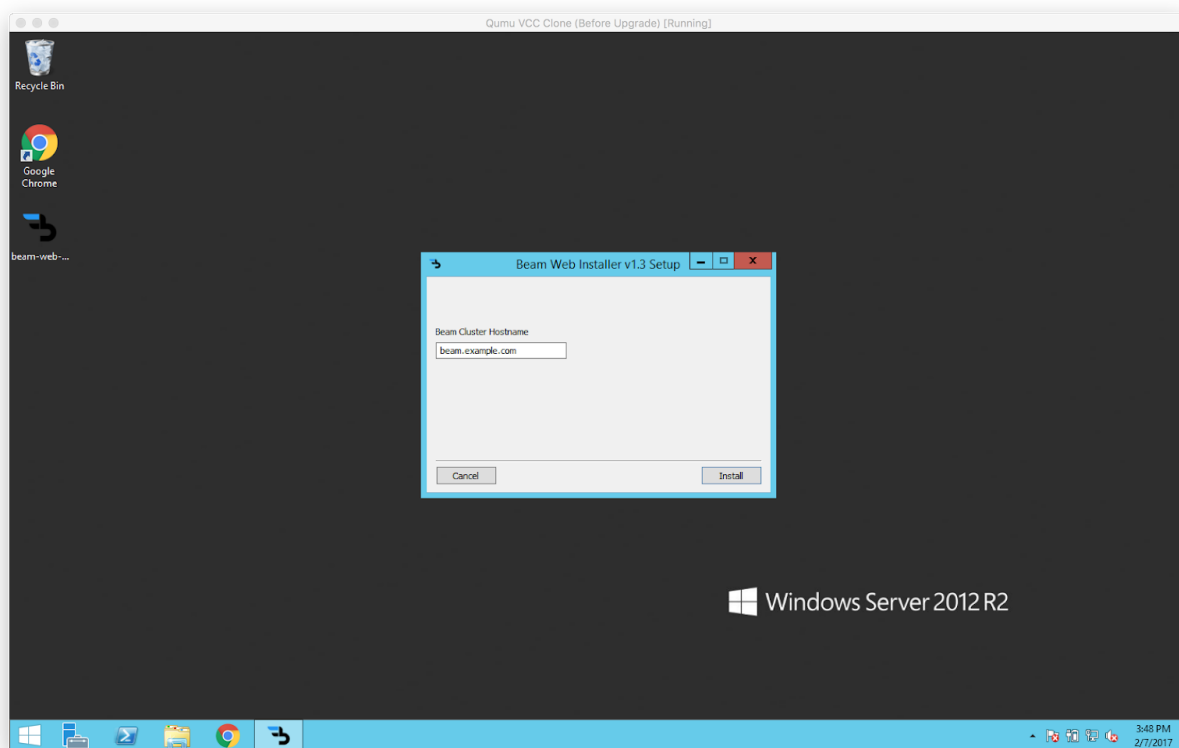
- Qumu VCC 7.5 and later
- Microsoft IIS 7.5 and later

## Installer

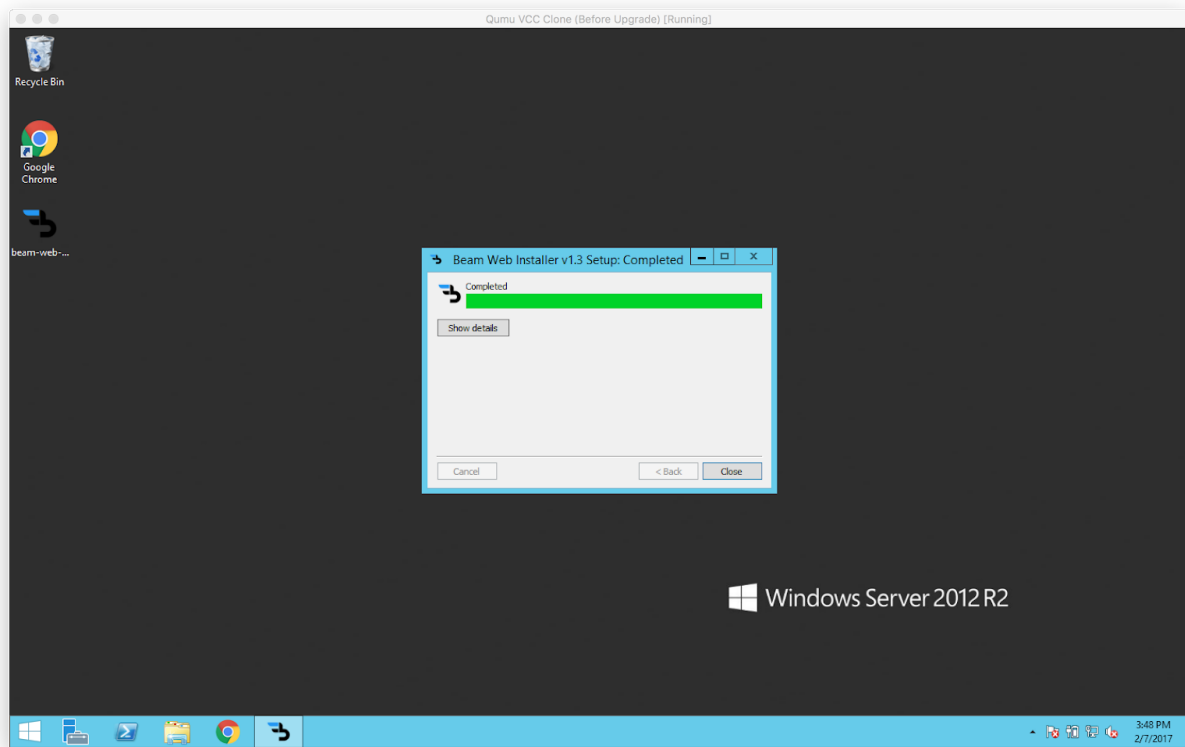
1. Copy the installer file (named **beam-web-installer.v.1.8.0.exe** or similar) to the desktop of the VCC web server.



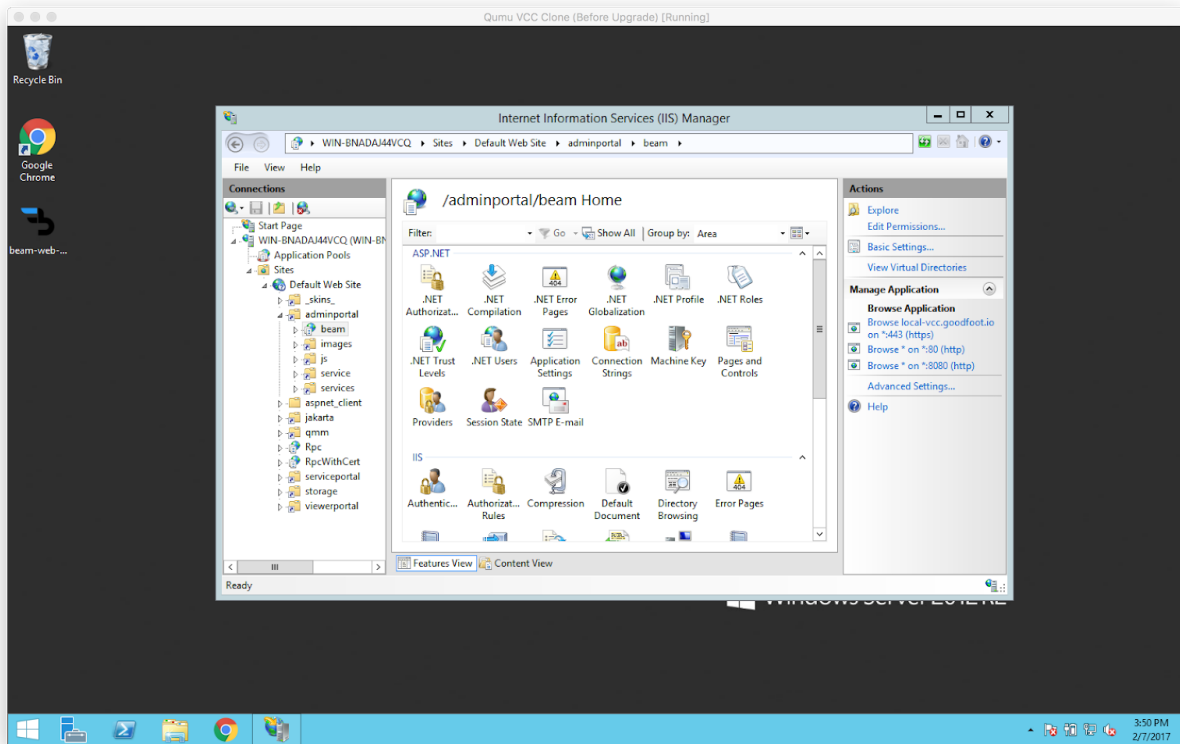
2. Double-click on the installer file, enter the Beam Cluster hostname, then click **Install**.



- Click **Close** when the installation is complete.



4. To confirm the installation, open **IIS Manager** and look for the **/adminportal/beam** virtual directory in the **Default Web Site**.



5. Remove the installer file from the Desktop.