



Operating System Installation Guide

Version 1.5.0

Contents

Copyright Notice	3
Document Revision History	4
Installation	5
Preparations	5
Network	5
Port Usage	5
System Requirements	5
Supported Platforms	5

Copyright Notice

No part of this document may be reproduced or transmitted in any form or by any means, electronic or mechanical, for any purpose, without express written permission. Under the law, reproducing includes translating into another language or format.

The software is protected by United States copyright laws and international treaty provision. Therefore, you must treat the software like any other copyrighted material (e.g. a book or sound recording).

Document Revision History

Wednesday, July 18th, 2017

- Initial release of documentation.

Installation

Preparations

To install the band operating system, you must have:

- Intel Compute Stick, model STK1AW32SC
- 32 GB, EFI-formatted USB drive containing the Band OS installer

Network

Port Usage

Protocol	Port	Direction	Purpose
HTTPS	443	Outbound	HTTPS Content
HTTP	80	Outbound	HTTP Content
SSH	22	Inbound	Device administration

System Requirements

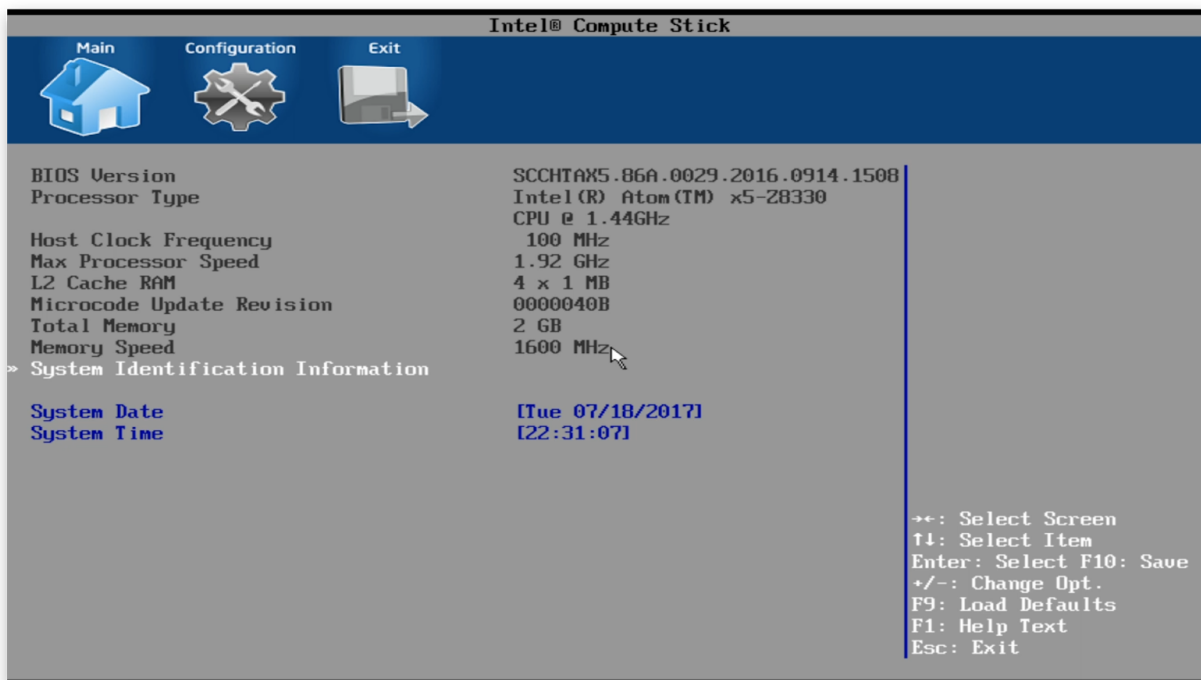
Supported Platforms

- Intel Compute Stick, model STK1AW32SC

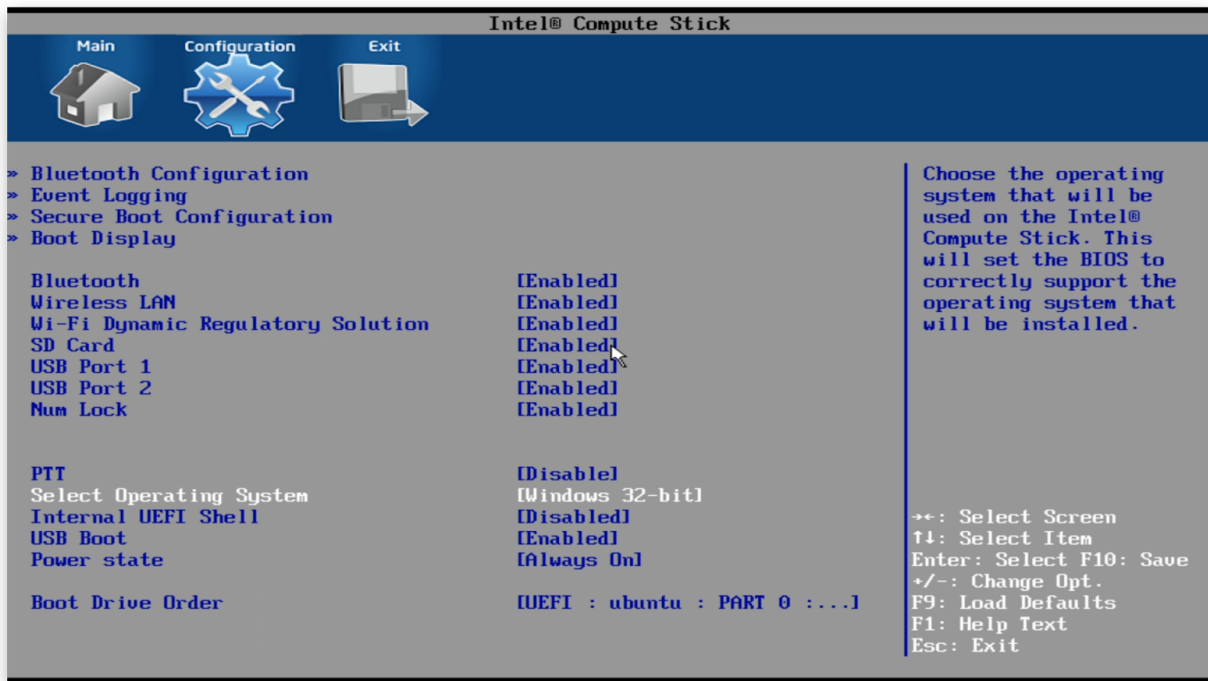
Connect the STK1AW32SC to an HDMI display, keyboard, and the USB drive. Power on the device, and during the loading prompt, press **F2** to enter the **Intel Compute Stick BIOS**.



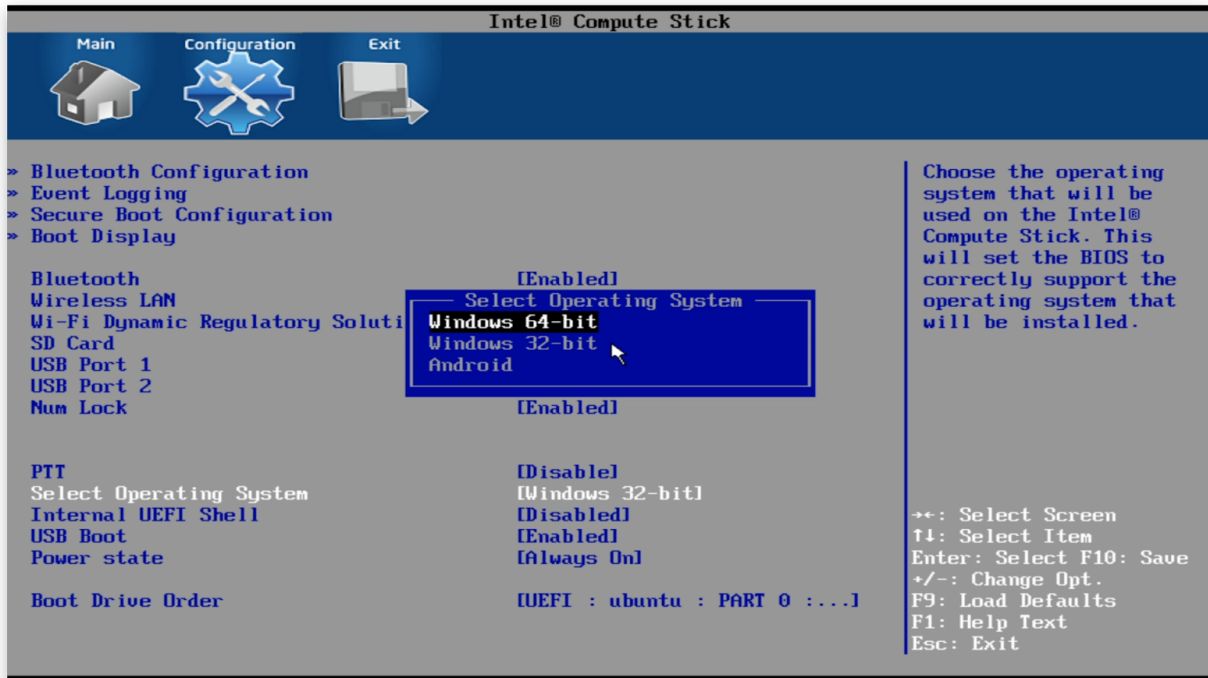
From the BIOS **Main** screen, press → to page right to the BIOS **Configuration** screen.



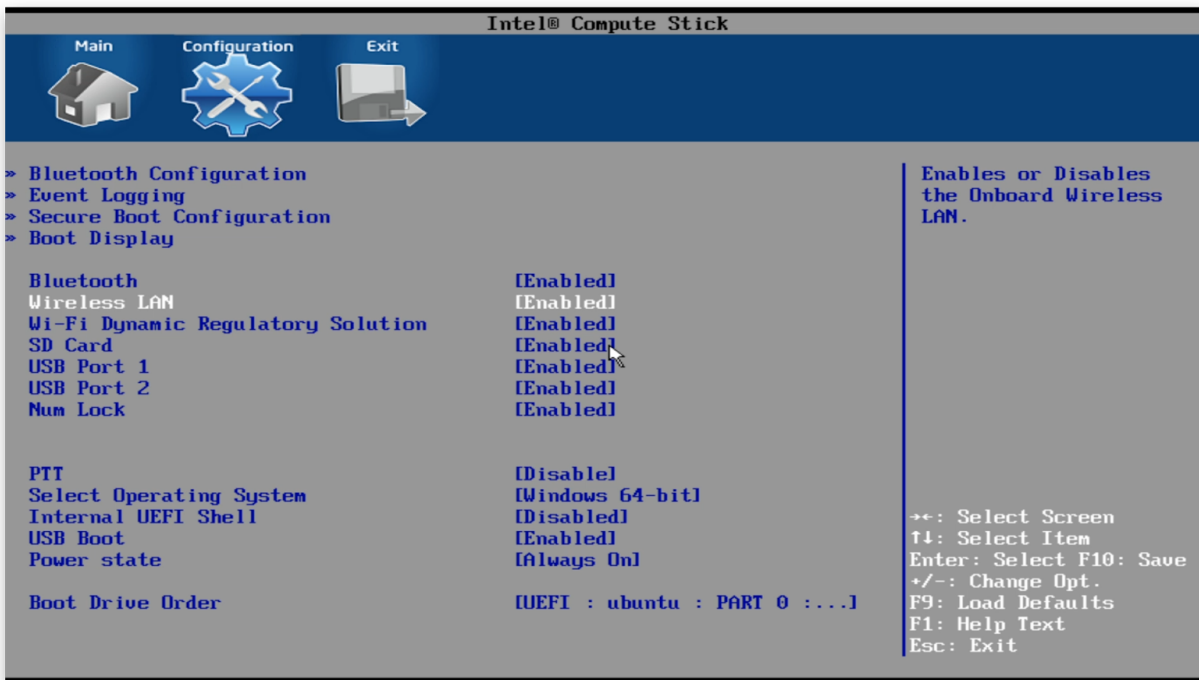
From the BIOS **Configuration** screen, press **↓** to reach **Select Operating System** and press **Enter**.



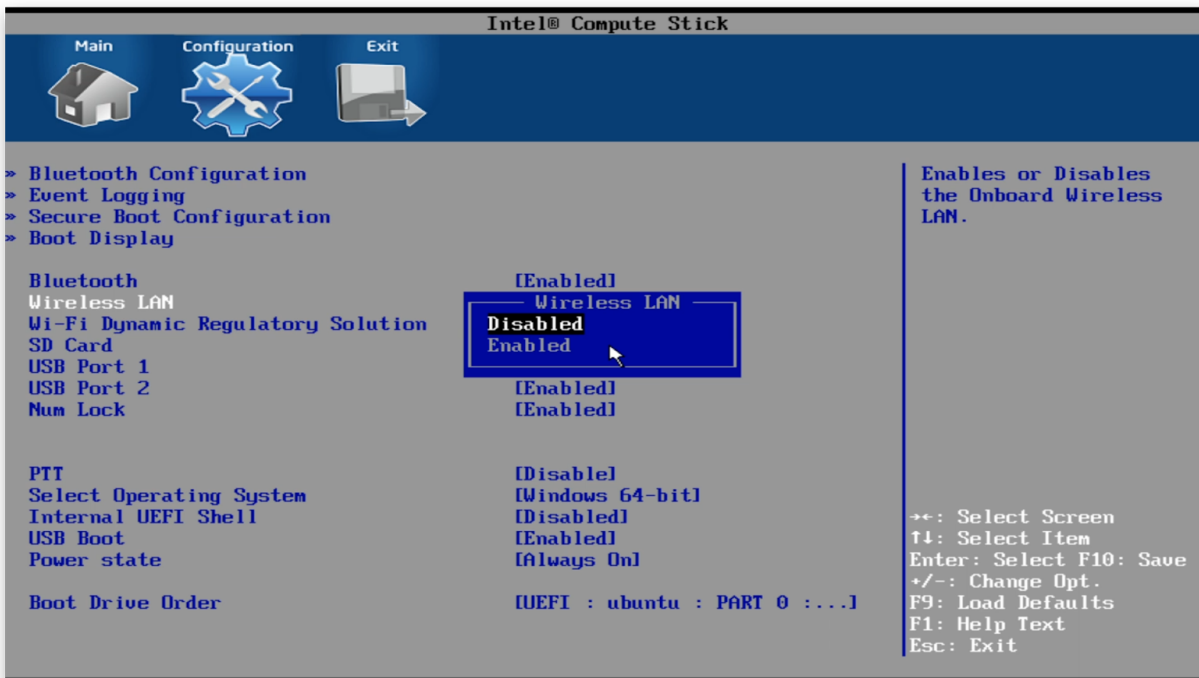
From the **Select Operating System** dialog, press **↑** to reach **Windows 64-bit** and press **Enter**.



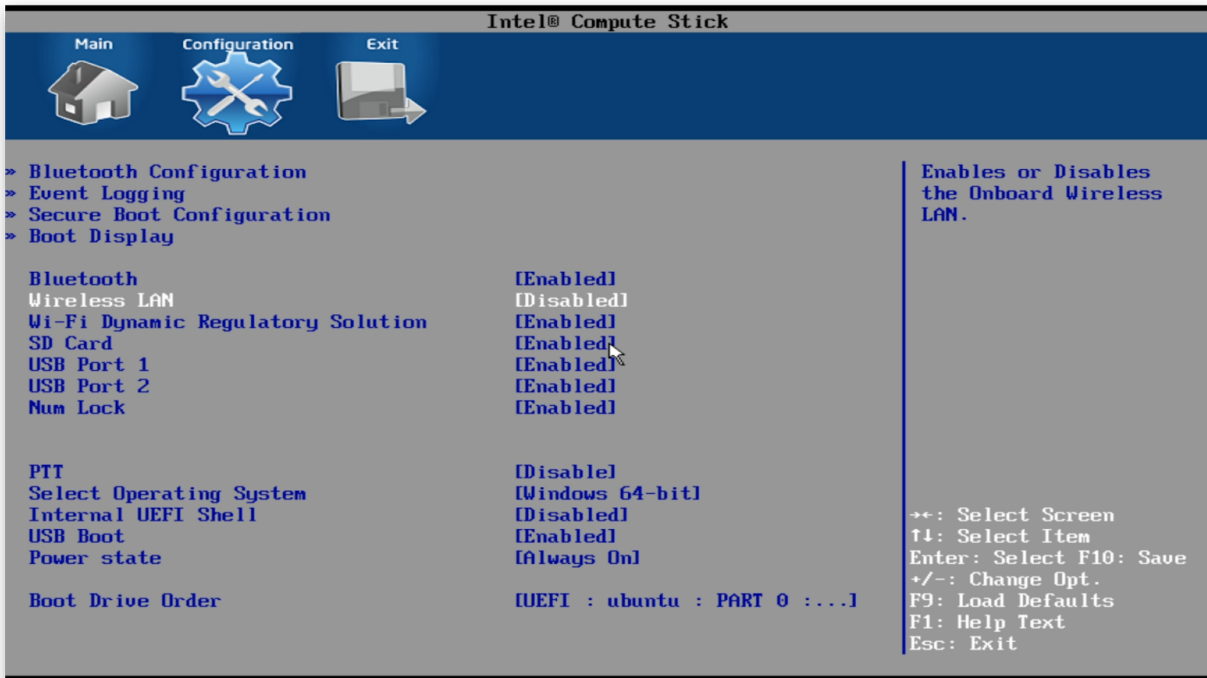
From the BIOS **Configuration** screen, press **↑** to reach **Wireless LAN** and press **Enter**.



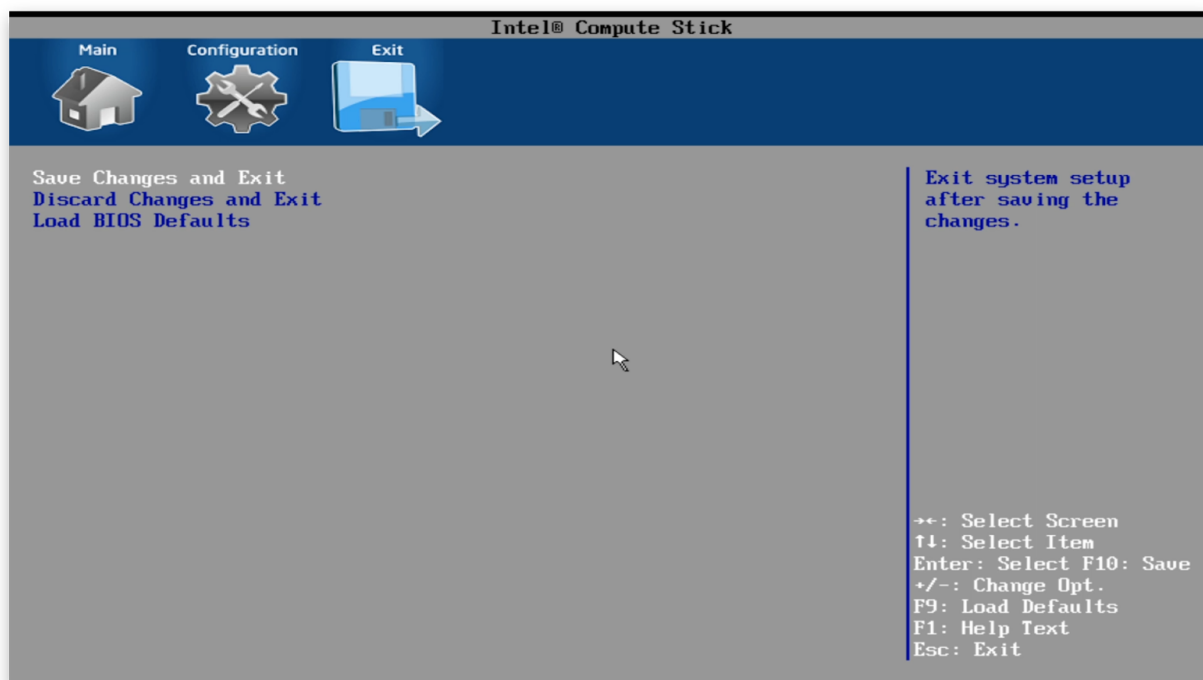
From the **Wireless LAN** dialog, press **↑** to reach **Disabled** and press **Enter**.



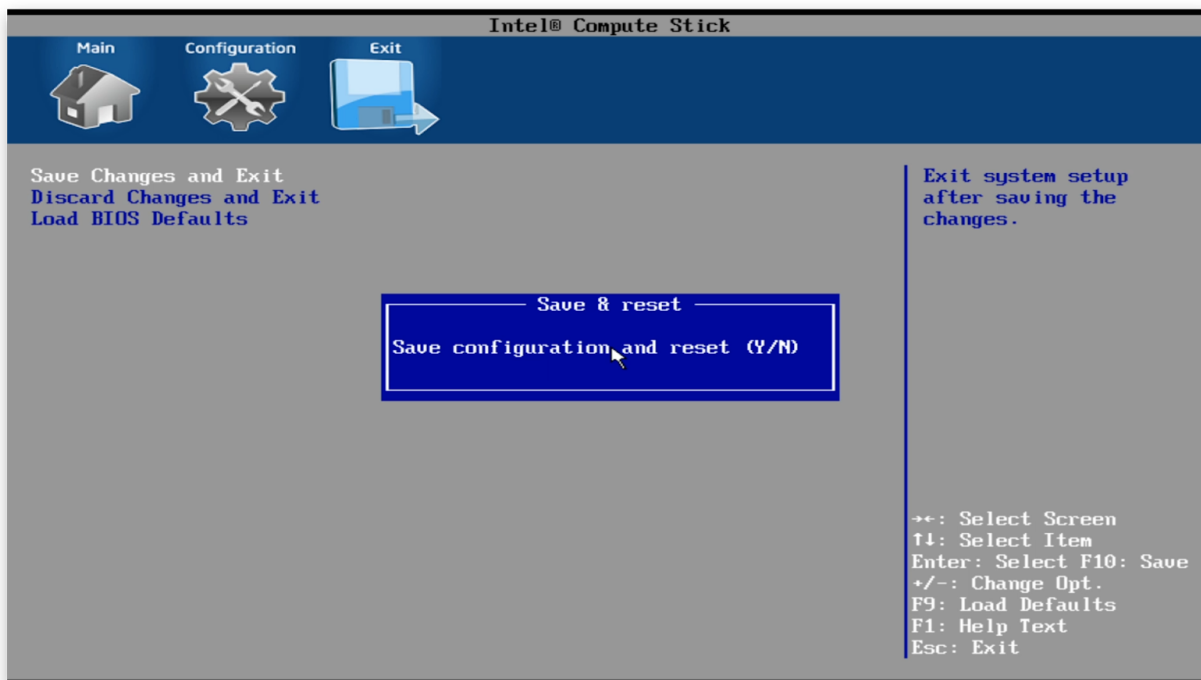
From the BIOS **Configuration** screen, press → to page right to the BIOS **Exit** screen.



From the BIOS **Exit** screen, press **Enter** to **Save Changes and Exit**.



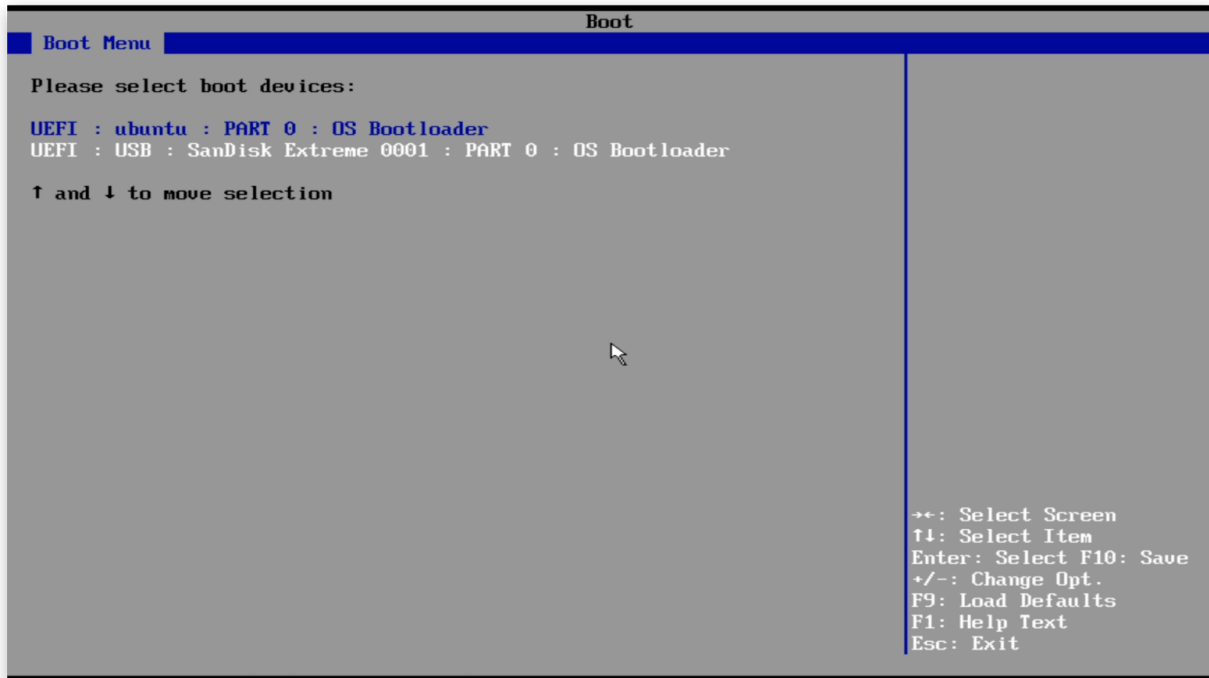
From the **Save & Reset** dialog press **Y** to save the configuration and reset.



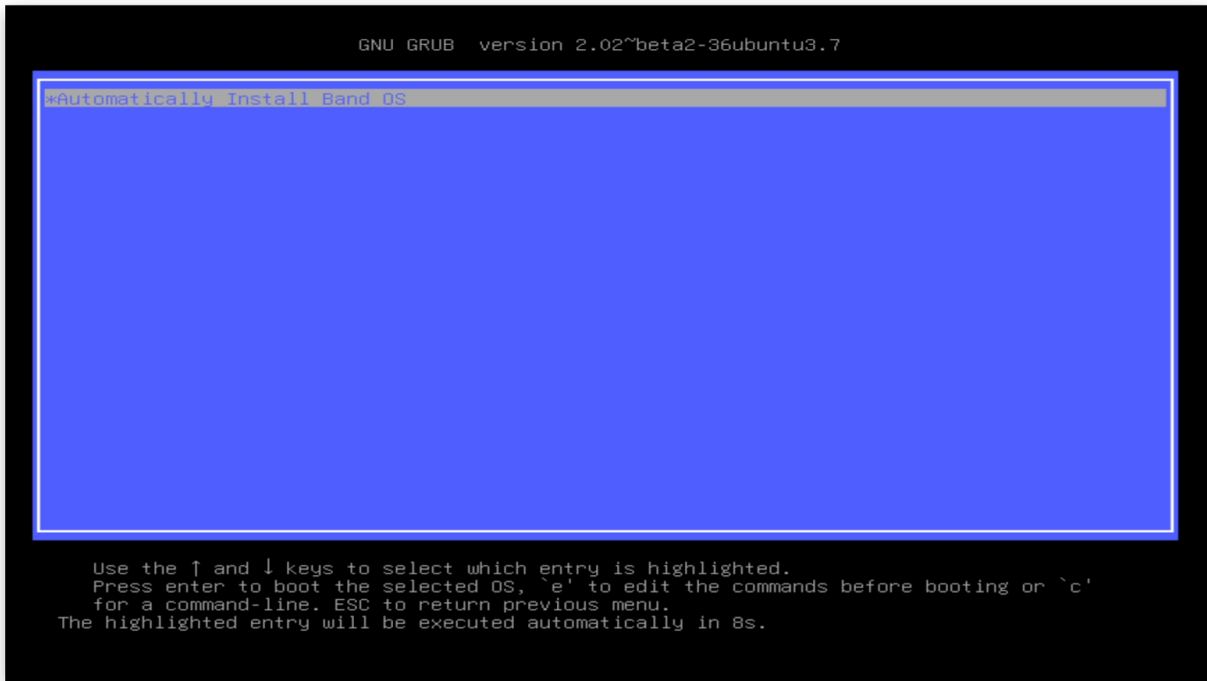
When the STK1AW32SC reboots, press **F10** to **Enter Boot Menu**.



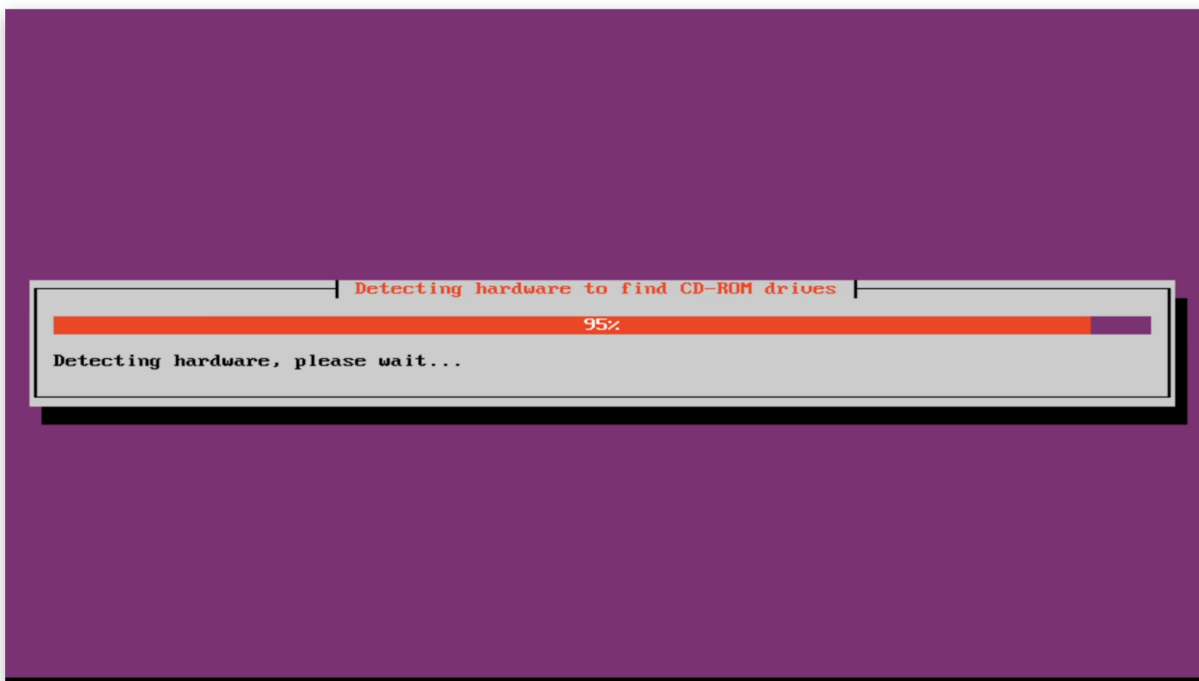
From the **Boot Menu** screen, press **↓** to reach **UEFI : USB : ...** and press **Enter**.




The STK1AW32SC will reboot into a menu and choose **Automatically Install Band OS** after 10 seconds.



Band OS will install automatically. User input is not required.
The installation process takes about five minutes.



When the install is complete, press the power button for five seconds to power down the device.
Remove the USB drive and plug in the USB network adapter. Press the power button briefly to turn on the device.



```
Sent SIGKILL to all processes
Requesting system reboot
```

The STK1AW32SC will boot into **Band OS** in kiosk mode. The device's IP and MAC addresses are visible in the upper right corner of the screen.

