



Operating System Installation Guide

WiFi Enabled

Version 1.5.0

Contents

Copyright Notice	3
Document Revision History	4
Installation	5
Preparations	5
Network	5
Port Usage	5
System Requirements	5
Supported Platforms	5
Flash ISO to USB	6
BIOS Settings	12
WiFi Setup	23

Copyright Notice

No part of this document may be reproduced or transmitted in any form or by any means, electronic or mechanical, for any purpose, without express written permission. Under the law, reproducing includes translating into another language or format.

The software is protected by United States copyright laws and international treaty provision. Therefore, you must treat the software like any other copyrighted material (e.g. a book or sound recording).

Document Revision History

Wednesday, July 18th, 2017

- Initial release of documentation.

Installation

Preparations

To install the band operating system, you must have:

- Intel Compute Stick, model STK1AW32SC
- 32 GB, EFI-formatted USB drive containing the Band OS installer

Network

Port Usage

Protocol	Port	Direction	Purpose
HTTPS	443	Outbound	HTTPS Content
HTTP	80	Outbound	HTTP Content
SSH	22	Inbound	Device administration

System Requirements

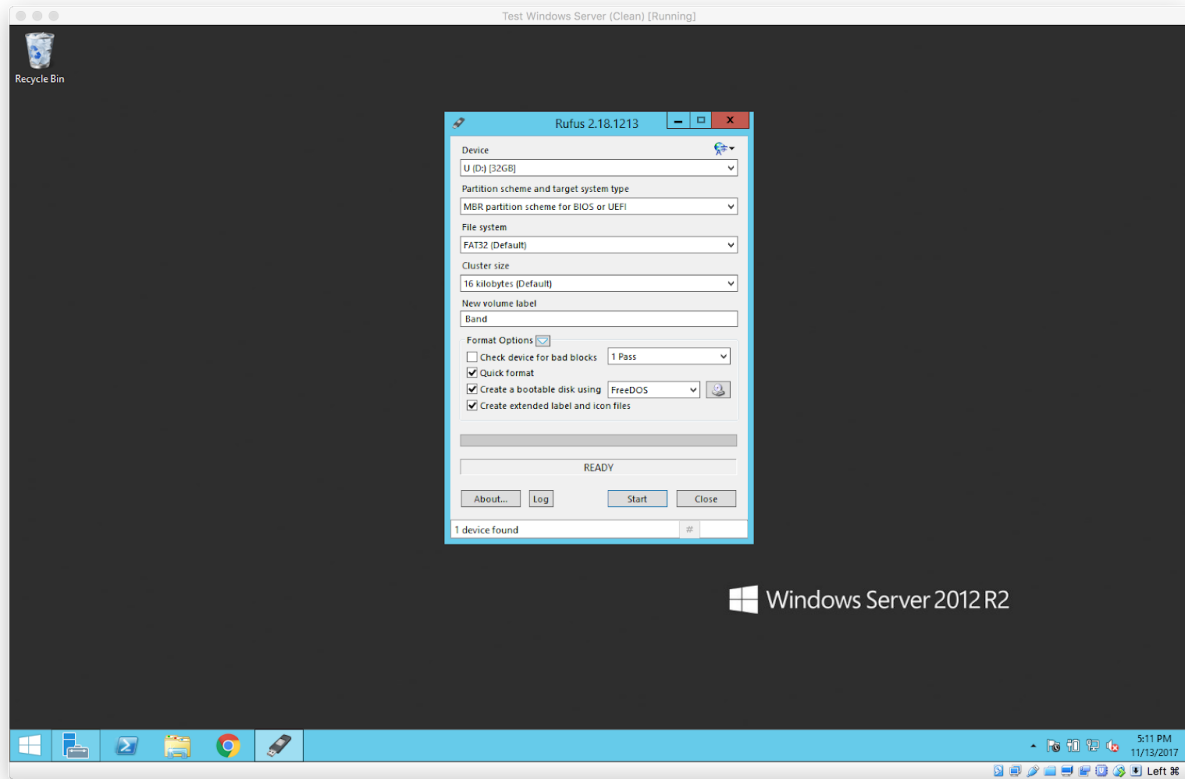
Supported Platforms

- Intel Compute Stick, model STK1AW32SC

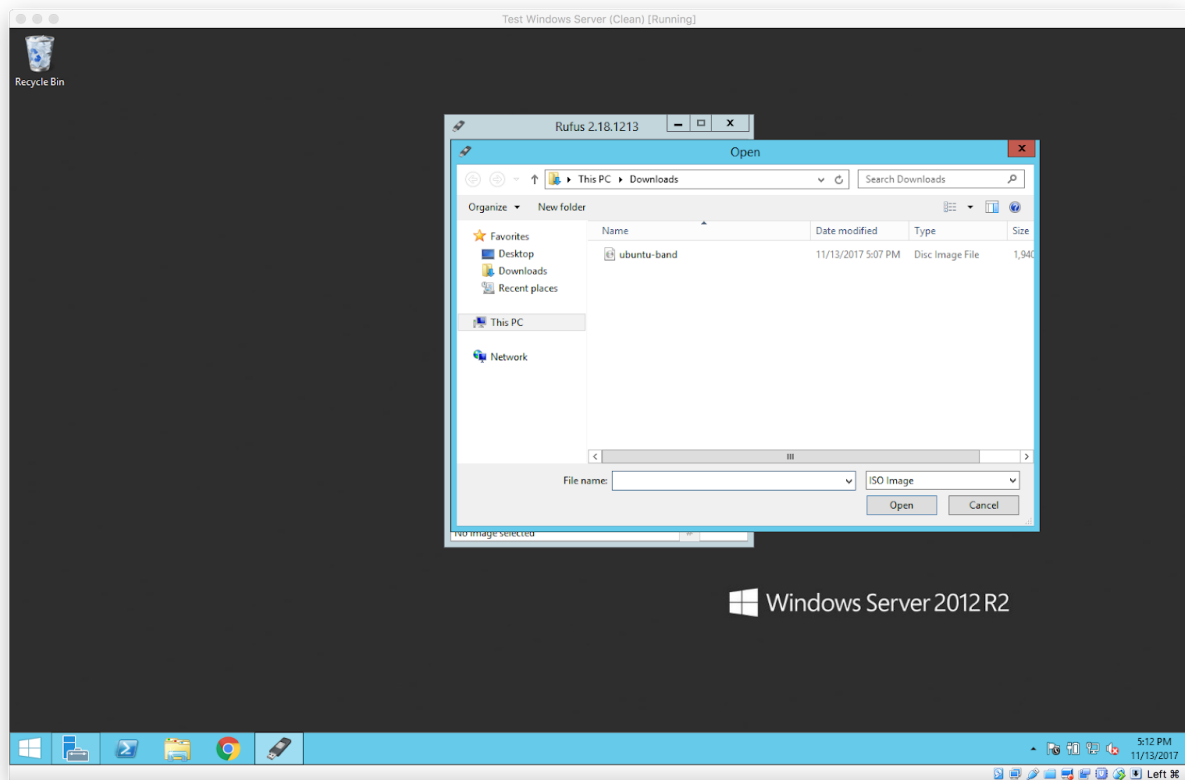
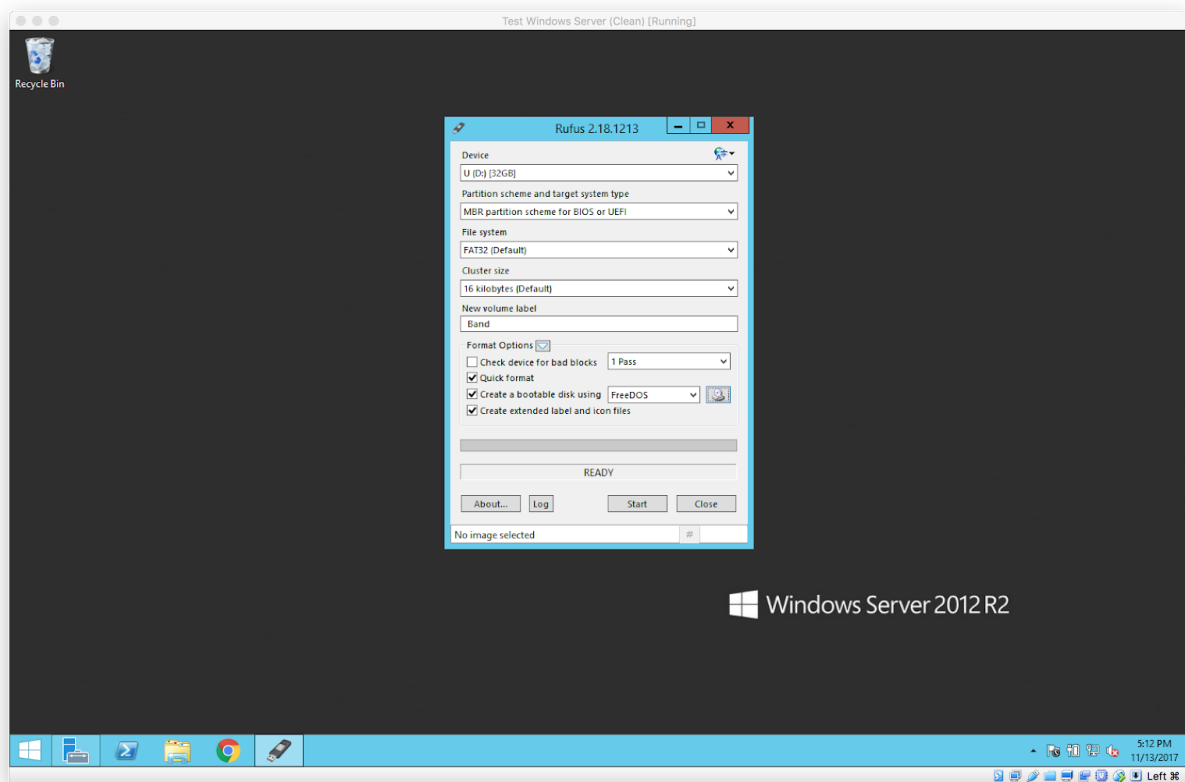
Flash ISO to USB

Plug the USB drive into a Windows computer, download and run the [Rufus](https://rufus.akeo.ie/downloads/rufus-2.18.exe) application, and select the USB drive from the the **Devices** menu.

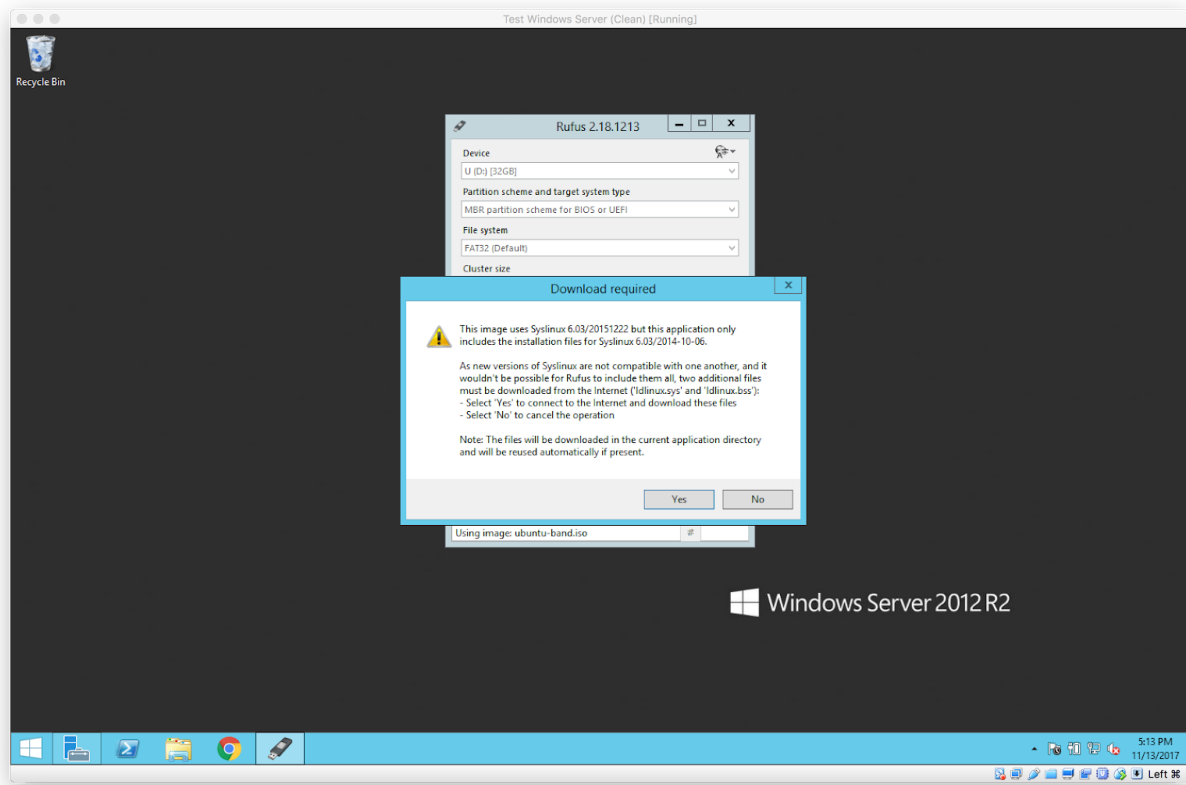
<https://rufus.akeo.ie/downloads/rufus-2.18.exe>



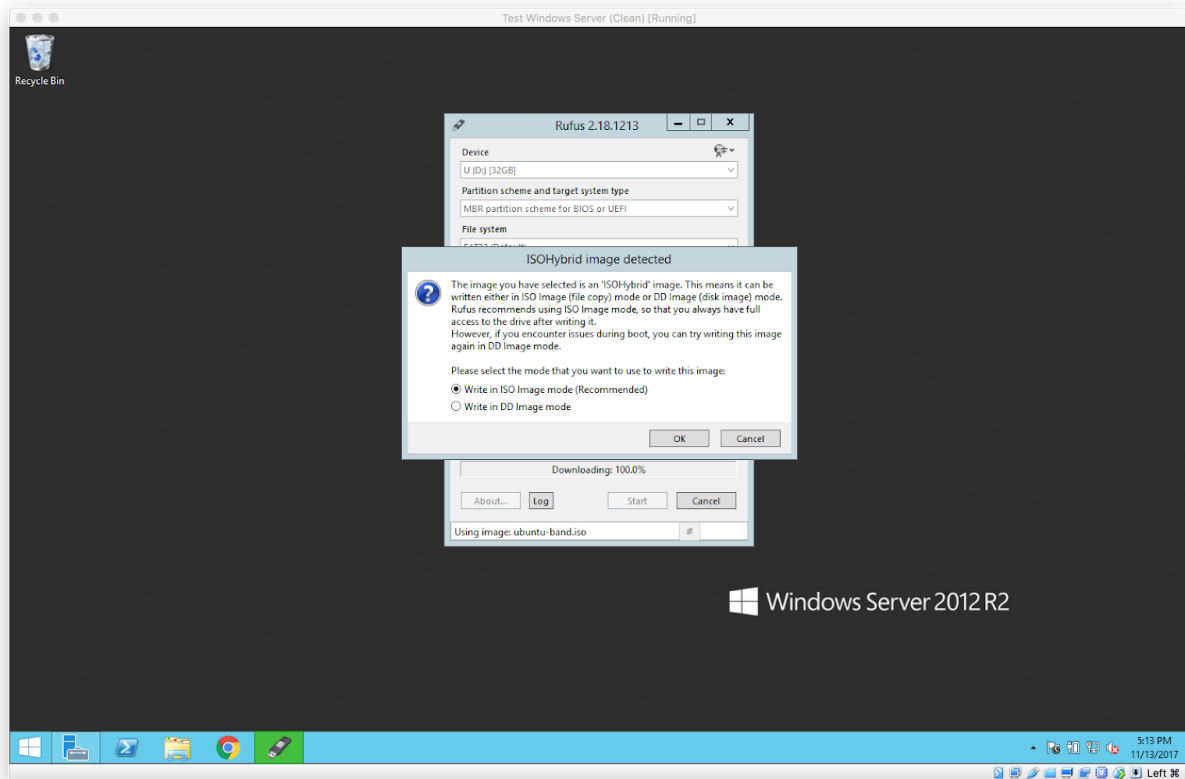
Click on the **Disk** icon to select the Band OS .ISO file.



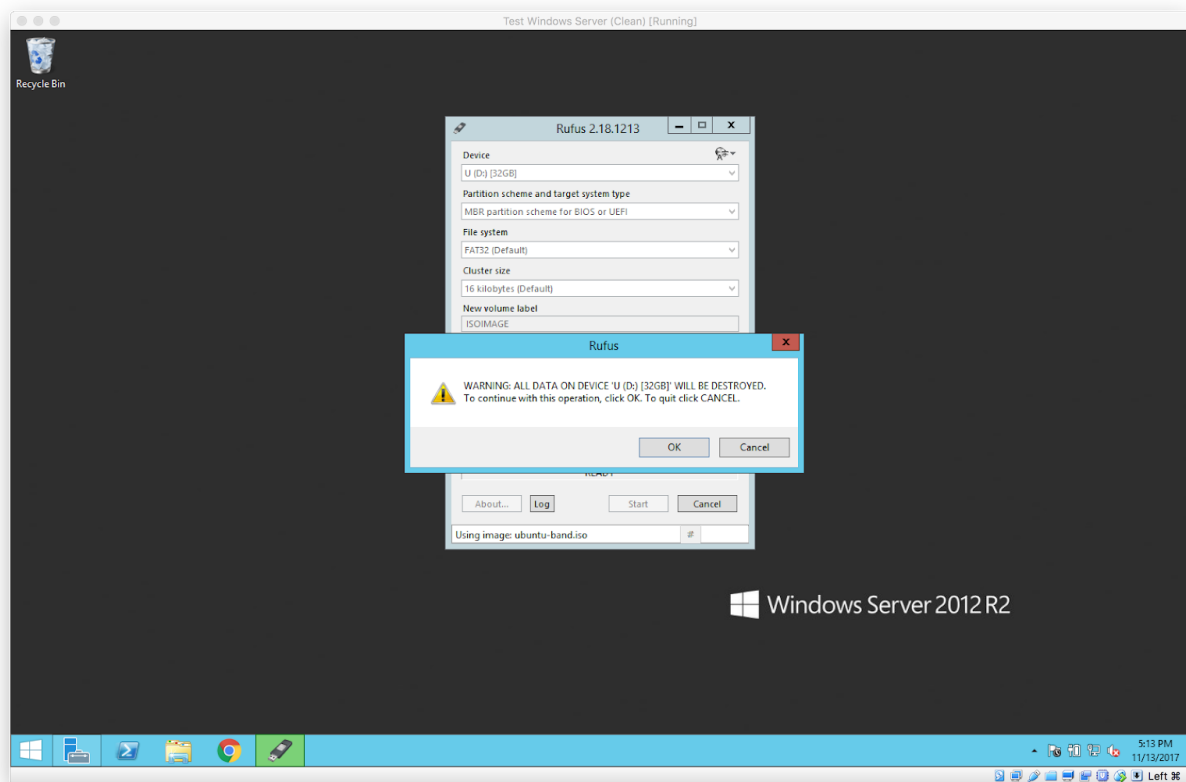
Click the **Start** button to start writing Band OS .ISO to the USB drive. If prompted to download libraries from internet, click **Yes**.



From the **ISO/Hybrid Image Detected** prompt, select **ISO** and click **OK**.

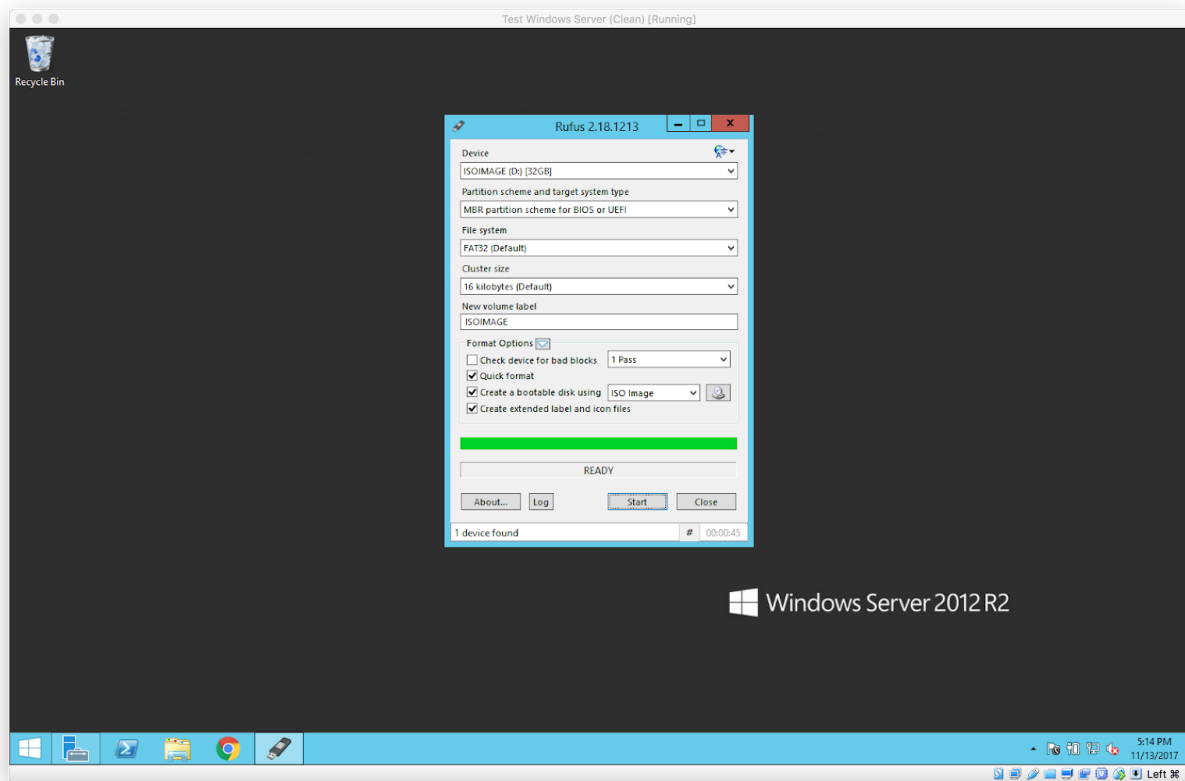


From the data warning prompt, click **OK**.



It takes 1-2 mins to complete writing.

When the progress bar reaches 100%, unplug the USB drive and plug it into Intel Compute Stick.

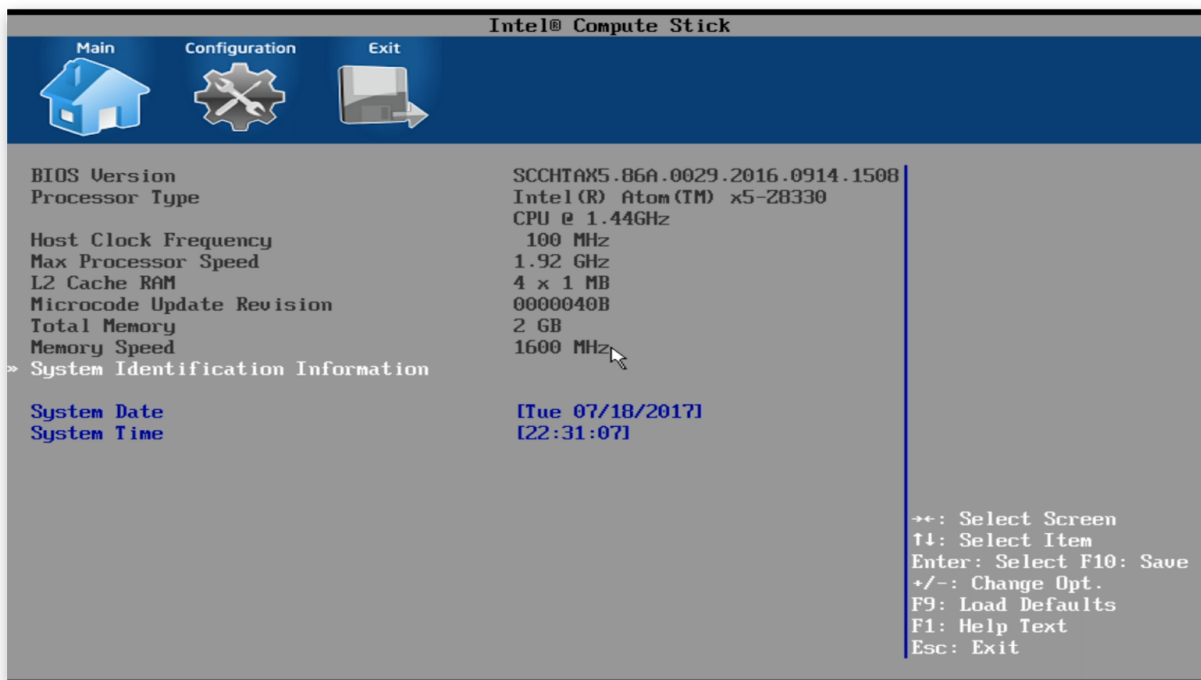


BIOS Settings

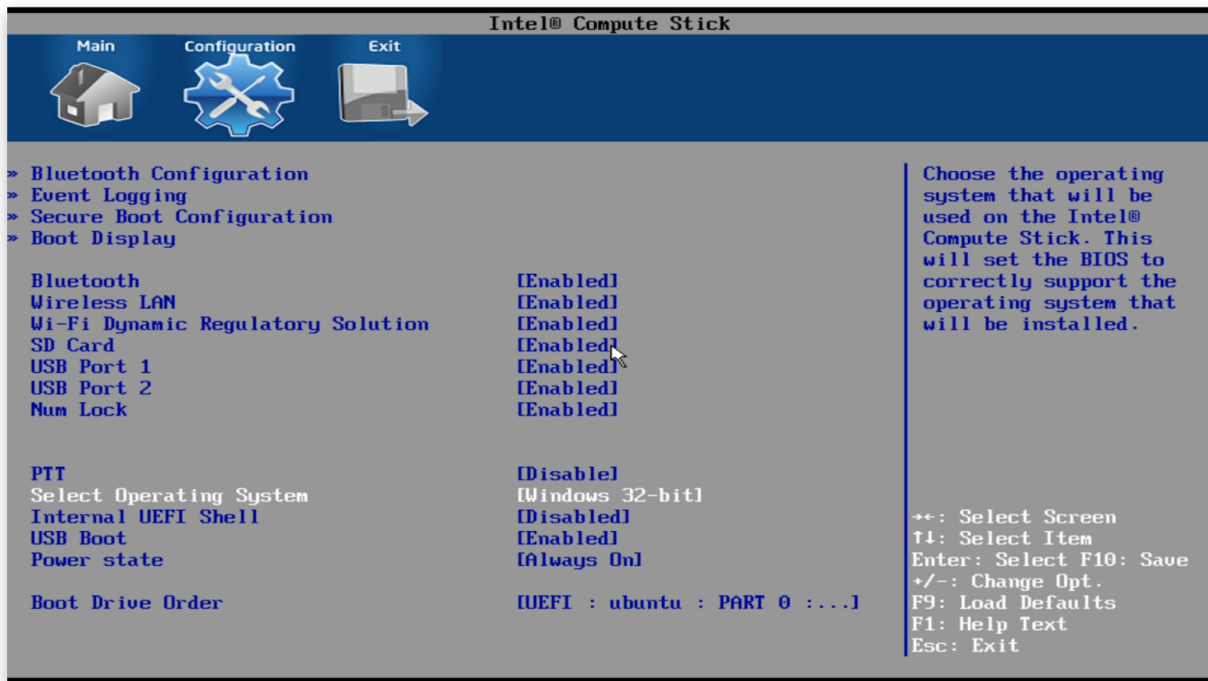
Connect the STK1AW32SC to an HDMI display, keyboard, and the USB drive. Power on the device, and during the loading prompt, press **F2** to enter the **Intel Compute Stick BIOS**.



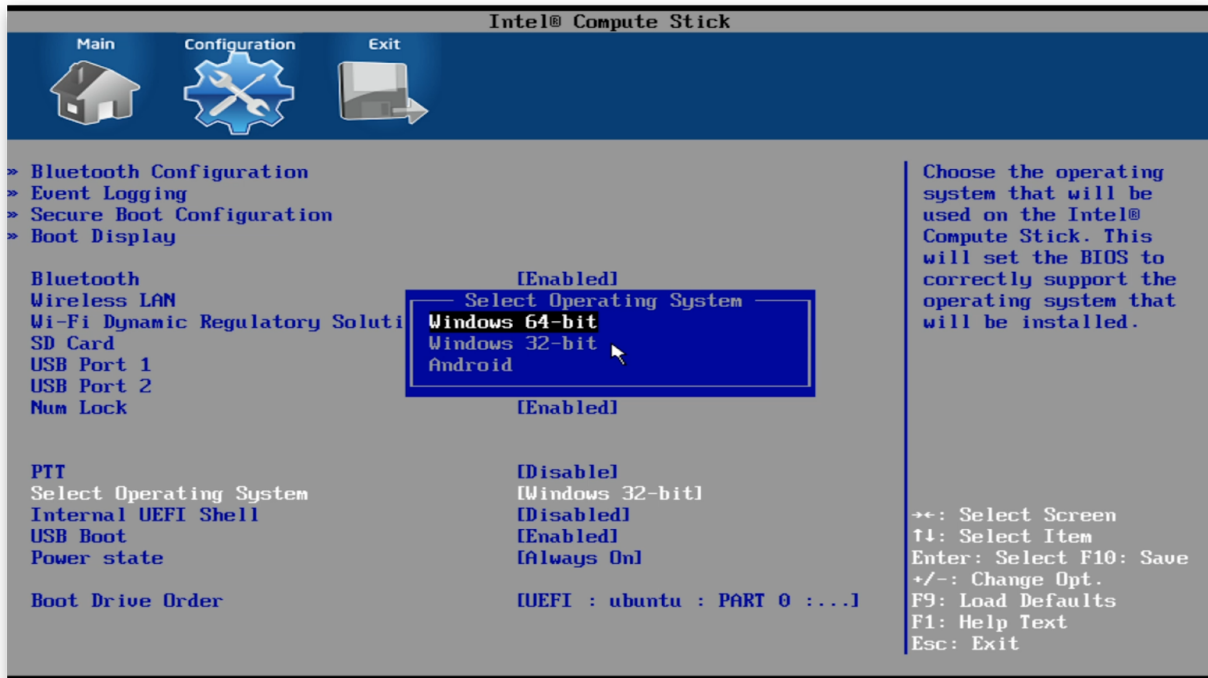
From the BIOS **Main** screen, press → to page right to the BIOS **Configuration** screen.



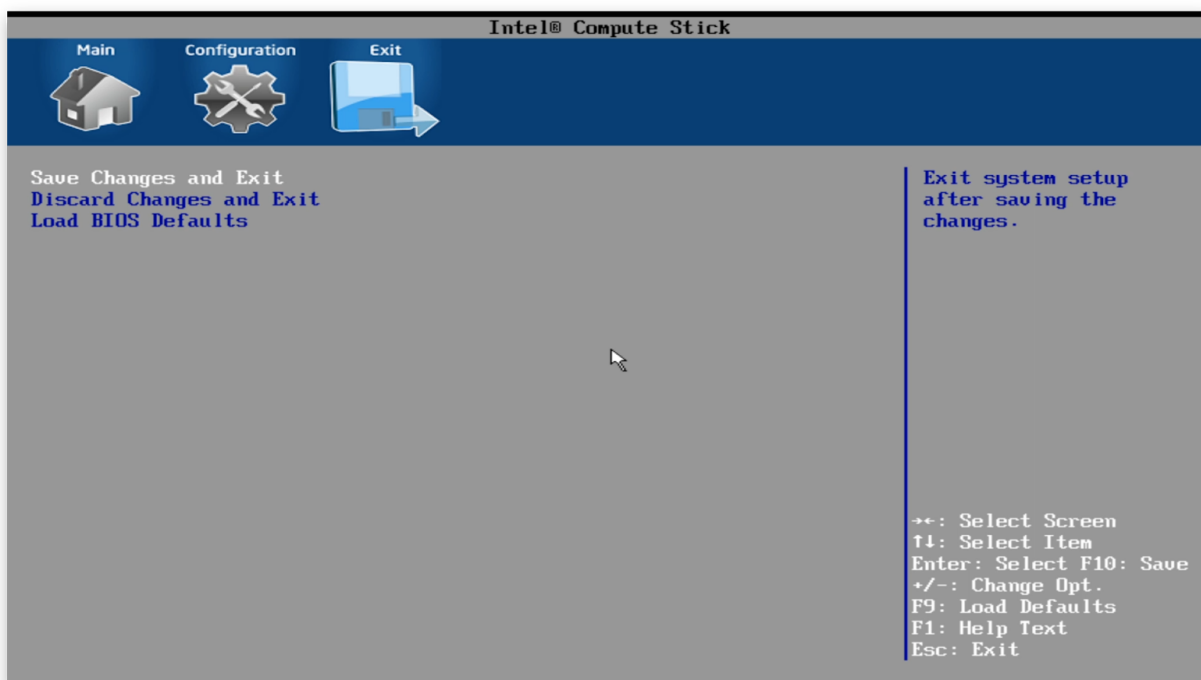
From the BIOS **Configuration** screen, press **↓** to reach **Select Operating System** and press **Enter**.



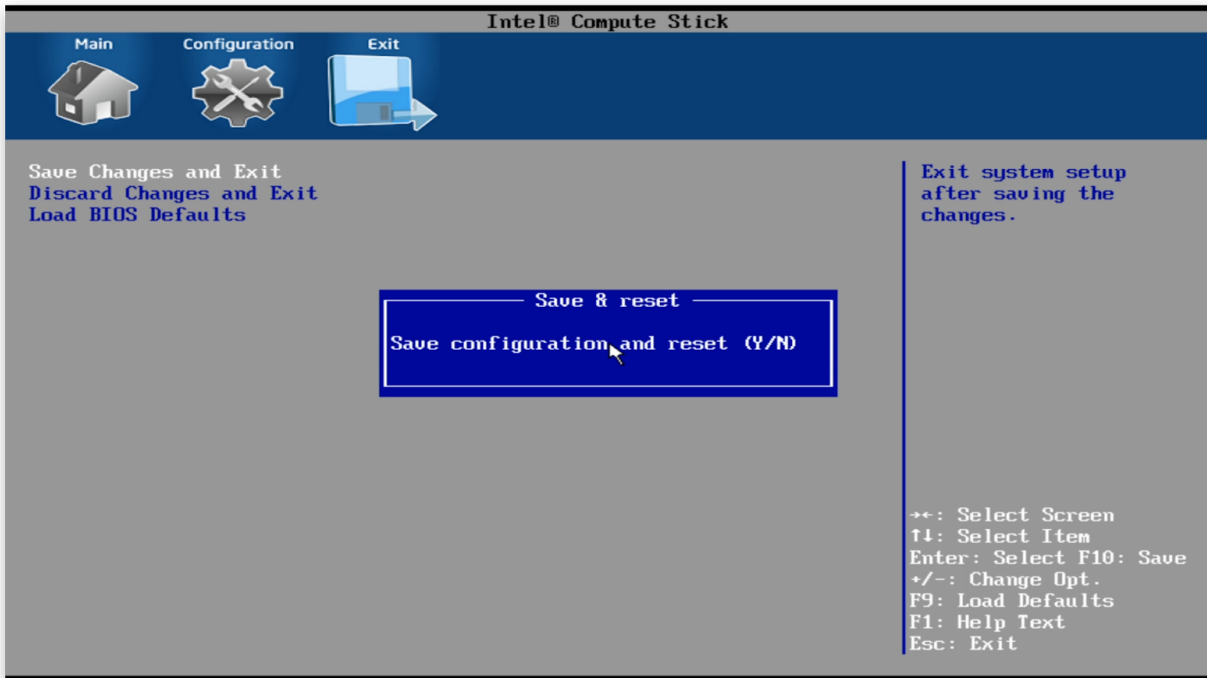
From the **Select Operating System** dialog, press **↑** to reach **Windows 64-bit** and press **Enter**.



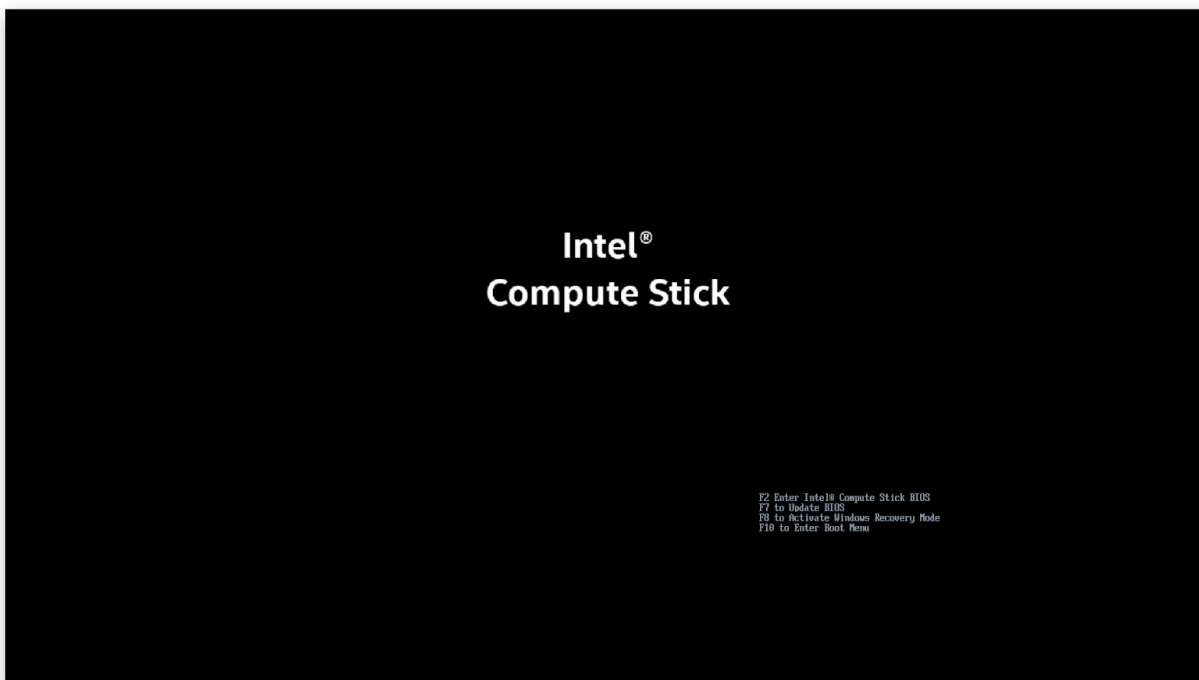
From the BIOS **Exit** screen, press **Enter** to **Save Changes and Exit**.



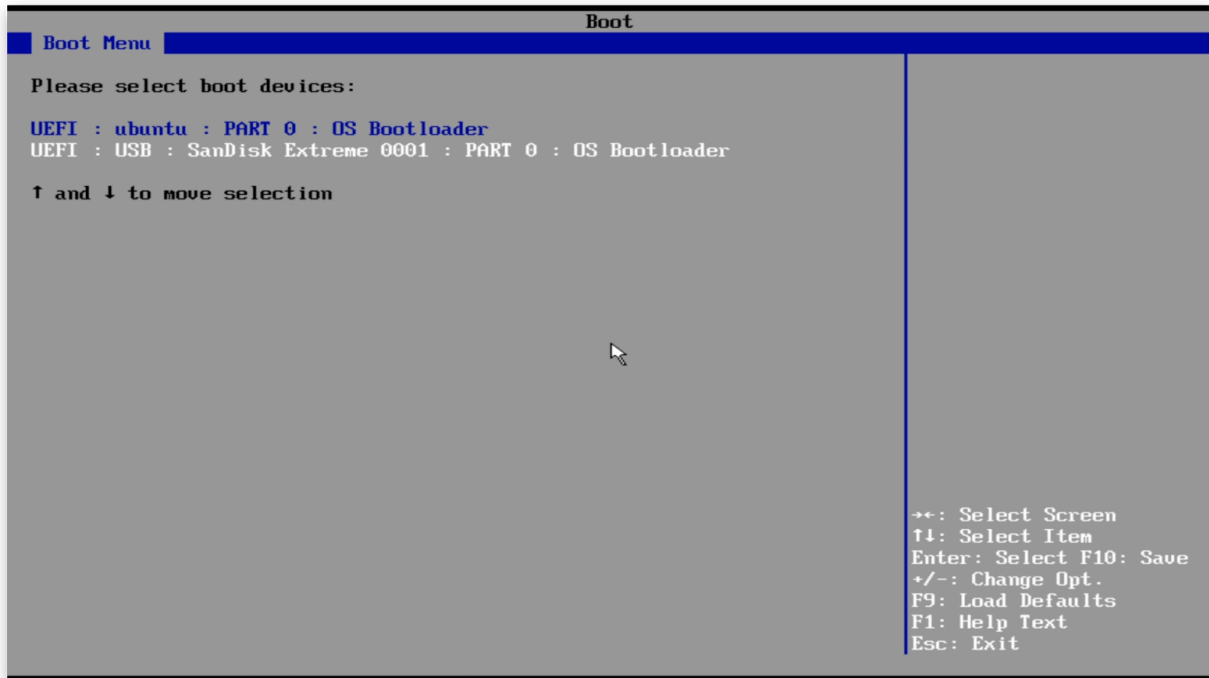
From the **Save & Reset** dialog press **Y** to save the configuration and reset.



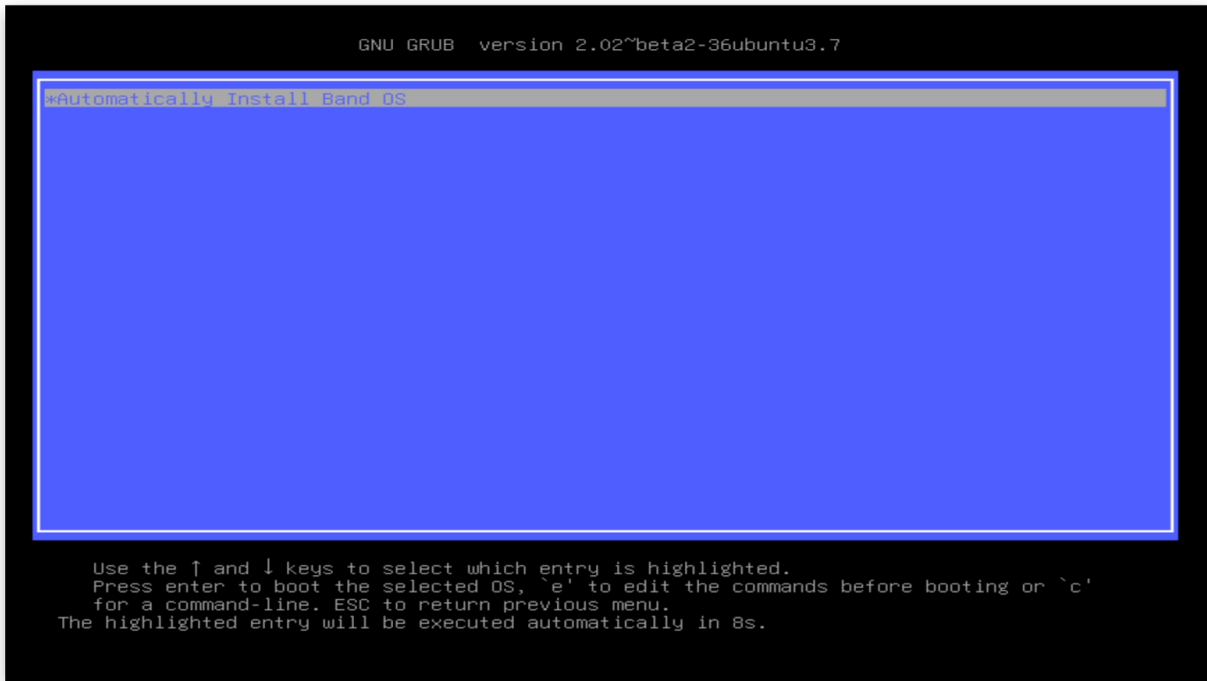
When the STK1AW32SC reboots, press **F10** to **Enter Boot Menu**.



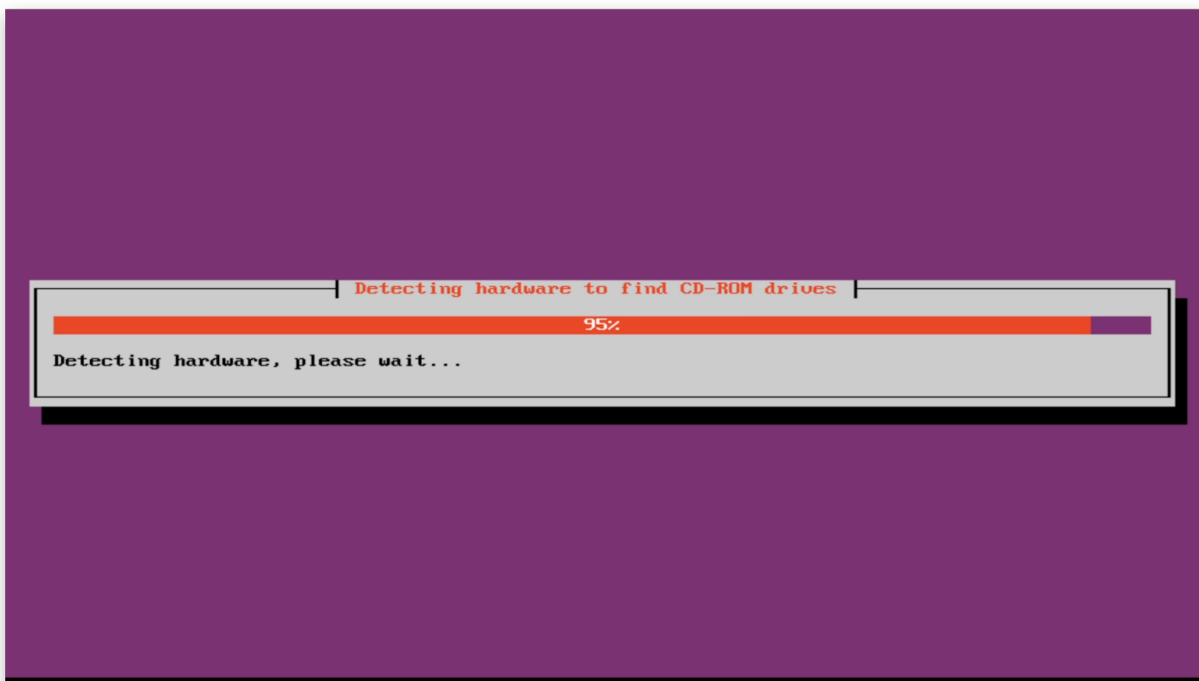
From the **Boot Menu** screen, press **↓** to reach **UEFI : USB : ...** and press **Enter**.




The STK1AW32SC will reboot into a menu and choose **Automatically Install Band OS** after 10 seconds.



Band OS will install automatically. User input is not required.
The installation process takes about five minutes.



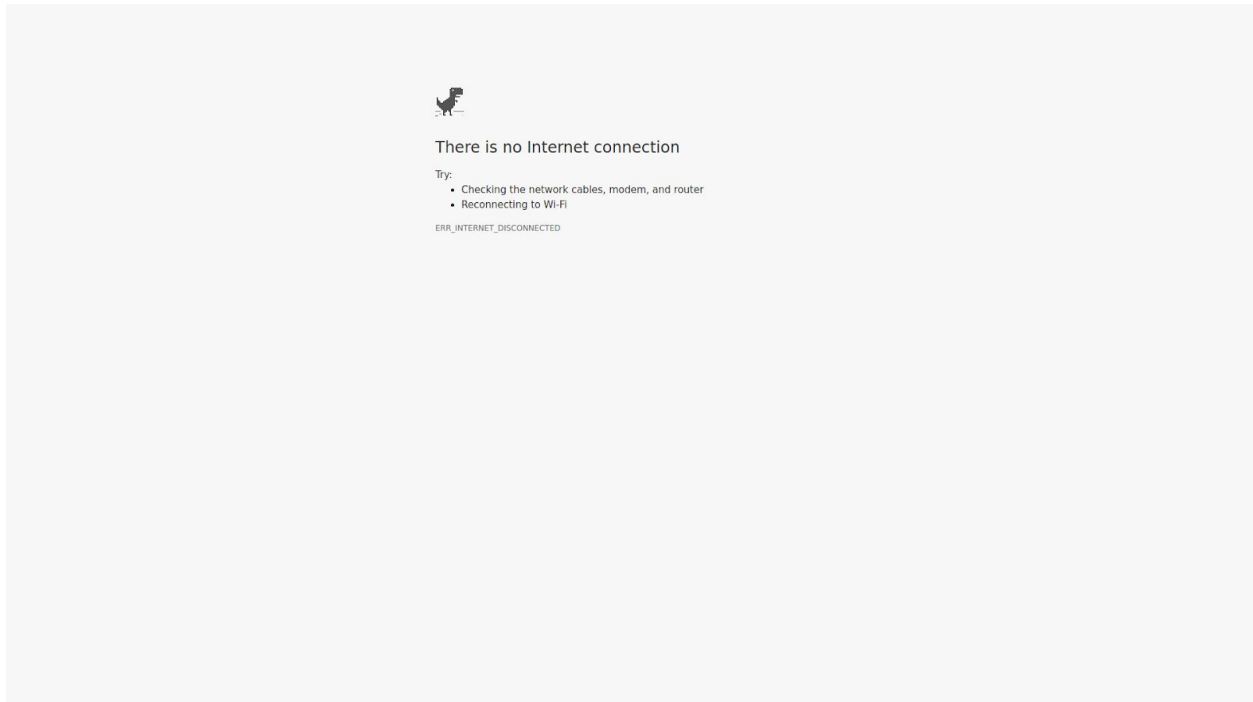
When the install is complete, press the power button for five seconds to power down the device.
Remove the USB drive and plug in the USB network adapter. Press the power button briefly to turn on the device.



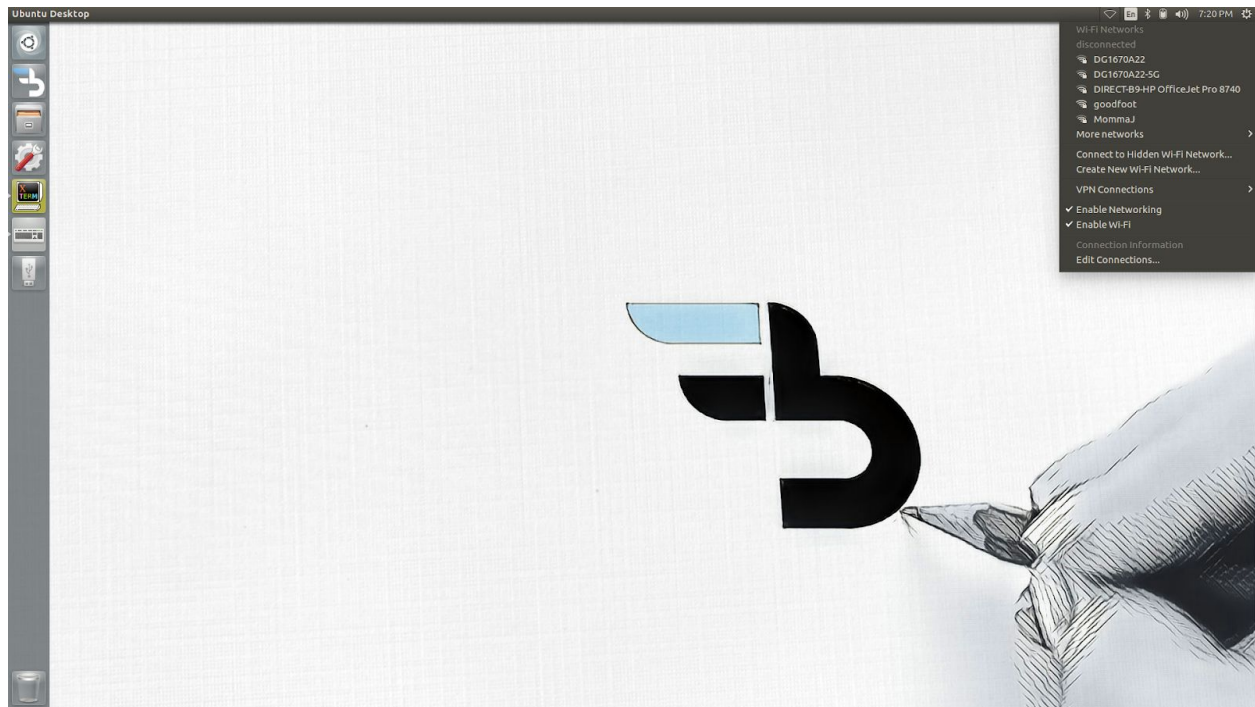
```
Sent SIGKILL to all processes
Requesting system reboot
```

WiFi Setup

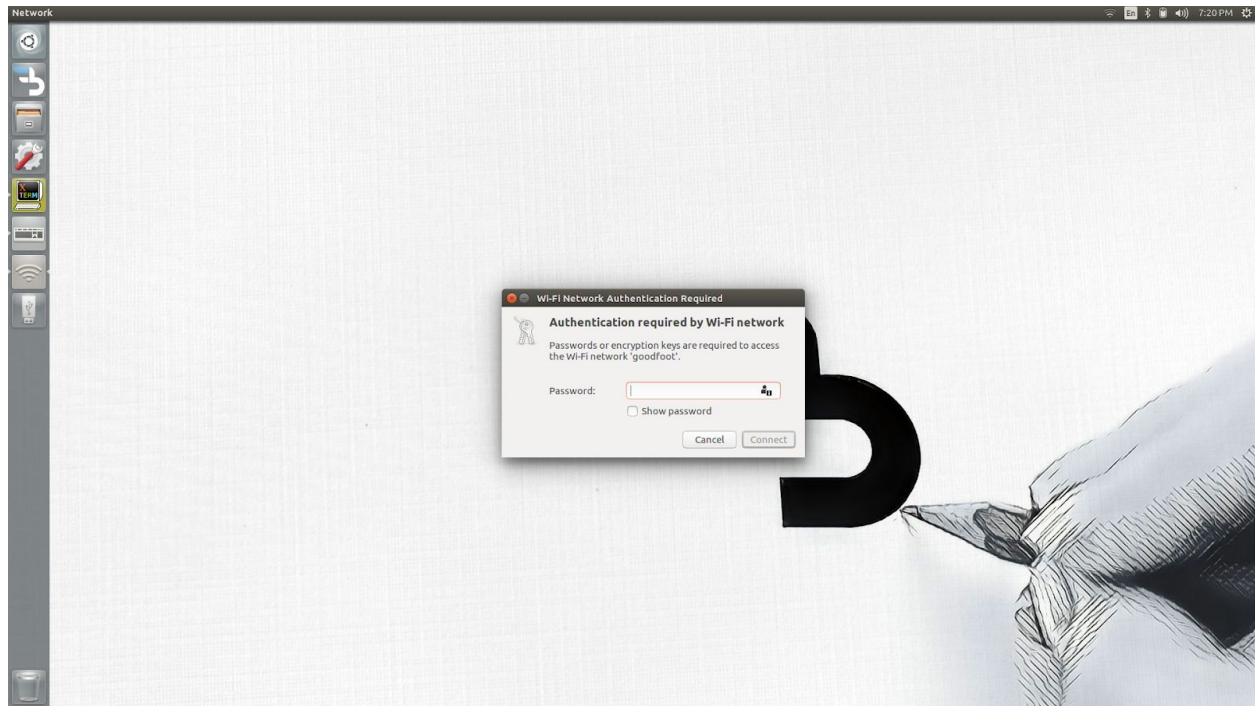
The STK1AW32SC will boot into **Band OS** in kiosk mode. It will show “No Internet Connection” page



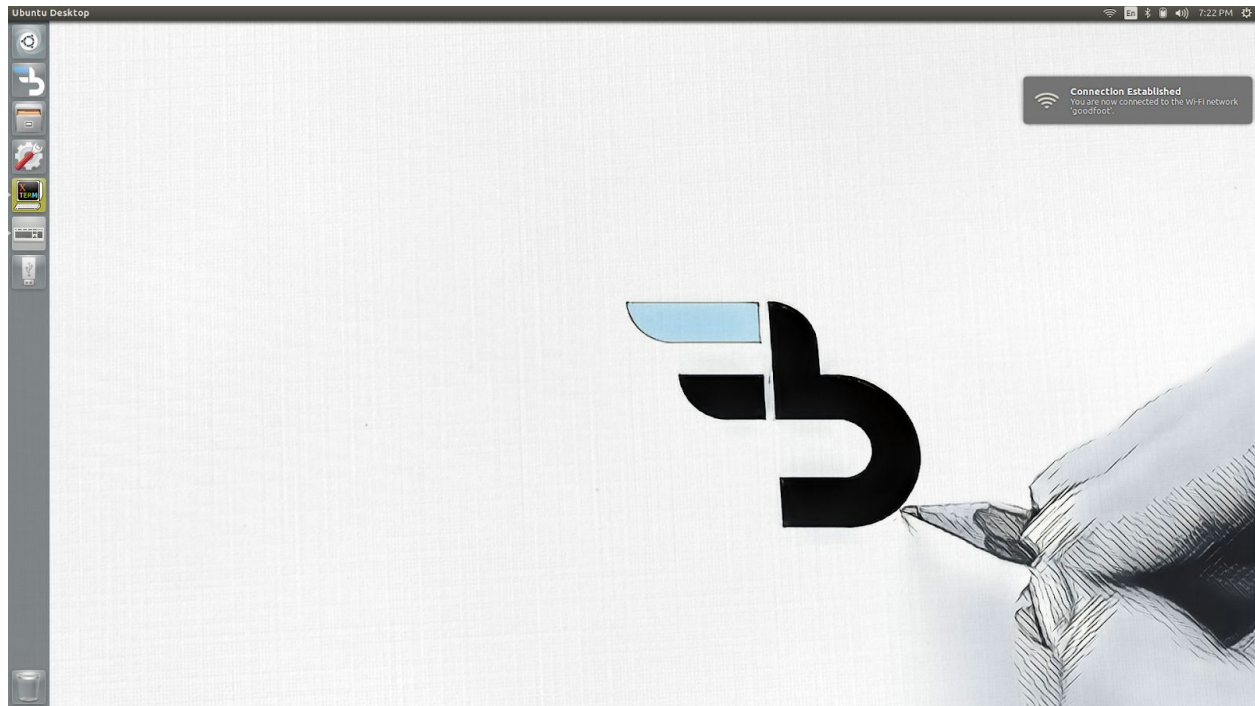
Press **ALT** and **F4** keys together to quit the Band OS application, Click WiFi icon on the upper right hand corner.



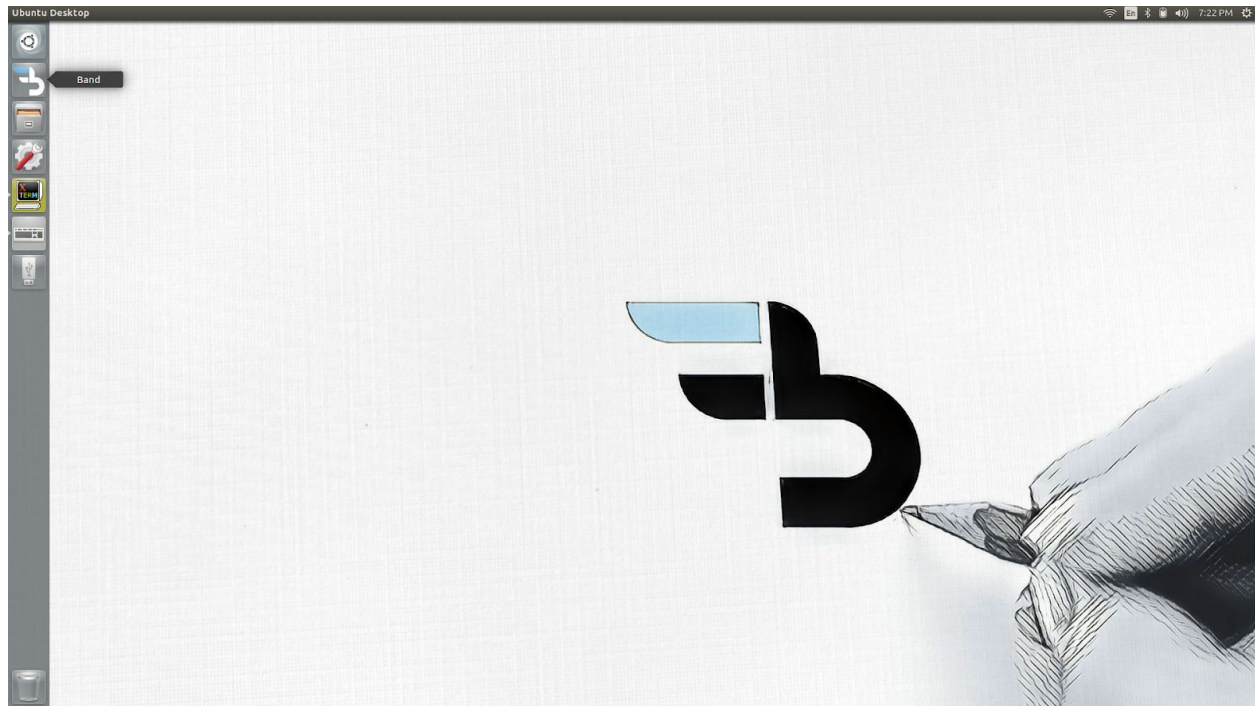
Select the network you want to connect to and click it, Password prompt will popup asking for the Network password, enter it and click **connect**



If the authentication was successful a notification will pop up suggesting the WiFi is connected



Click the **Band OS** Icon on the upper left hand corner to open the **Band OS** application



Finally the following screen will be displayed if the Band OS is registered as a device.

