



# **Stick Setup Guide**

**Version 1.1.0**

# Contents

<b>Copyright Notice</b>	<b>3</b>
<b>Document Revision History</b>	<b>4</b>
<b>Install Band Client</b>	<b>5</b>
Installation Options	8
<b>Uninstall Band Client</b>	<b>11</b>

## Copyright Notice

No part of this document may be reproduced or transmitted in any form or by any means, electronic or mechanical, for any purpose, without express written permission. Under the law, reproducing includes translating into another language or format.

The software is protected by United States copyright laws and international treaty provision. Therefore, you must treat the software like any other copyrighted material (e.g. a book or sound recording).

## Document Revision History

### July 30th, 2018

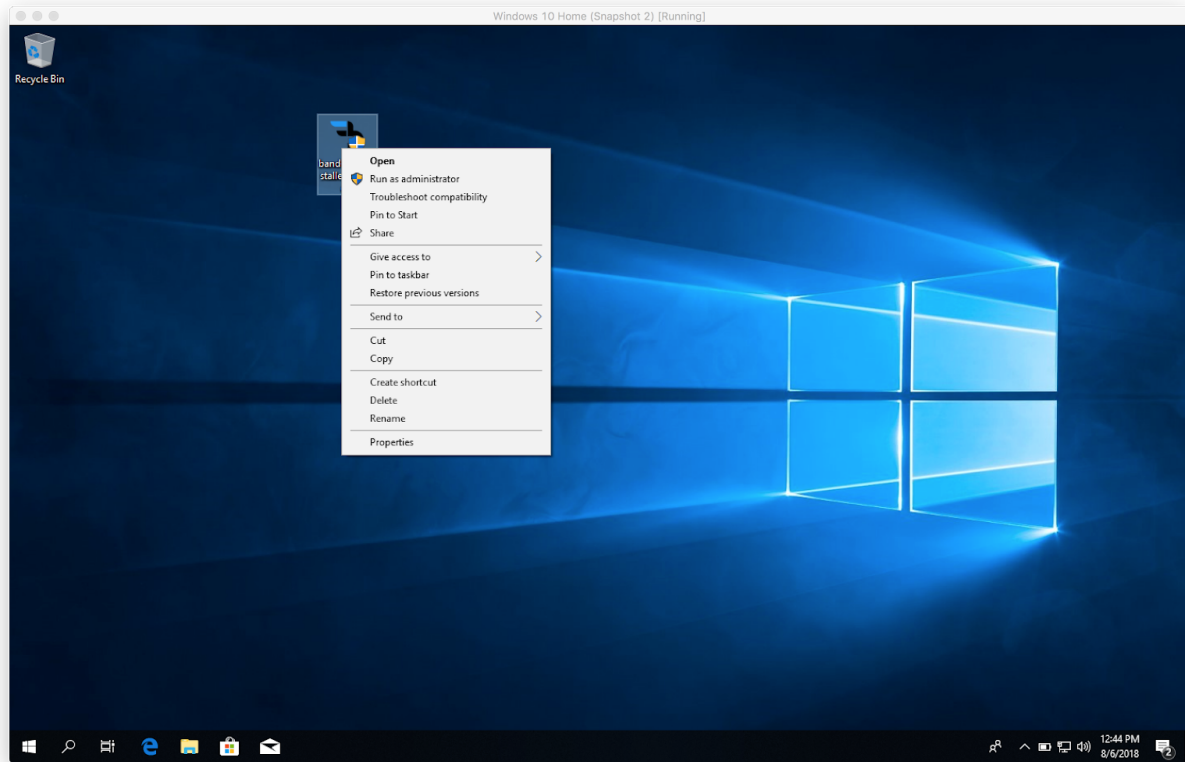
- Initial release of documentation.

### August 6th, 2018

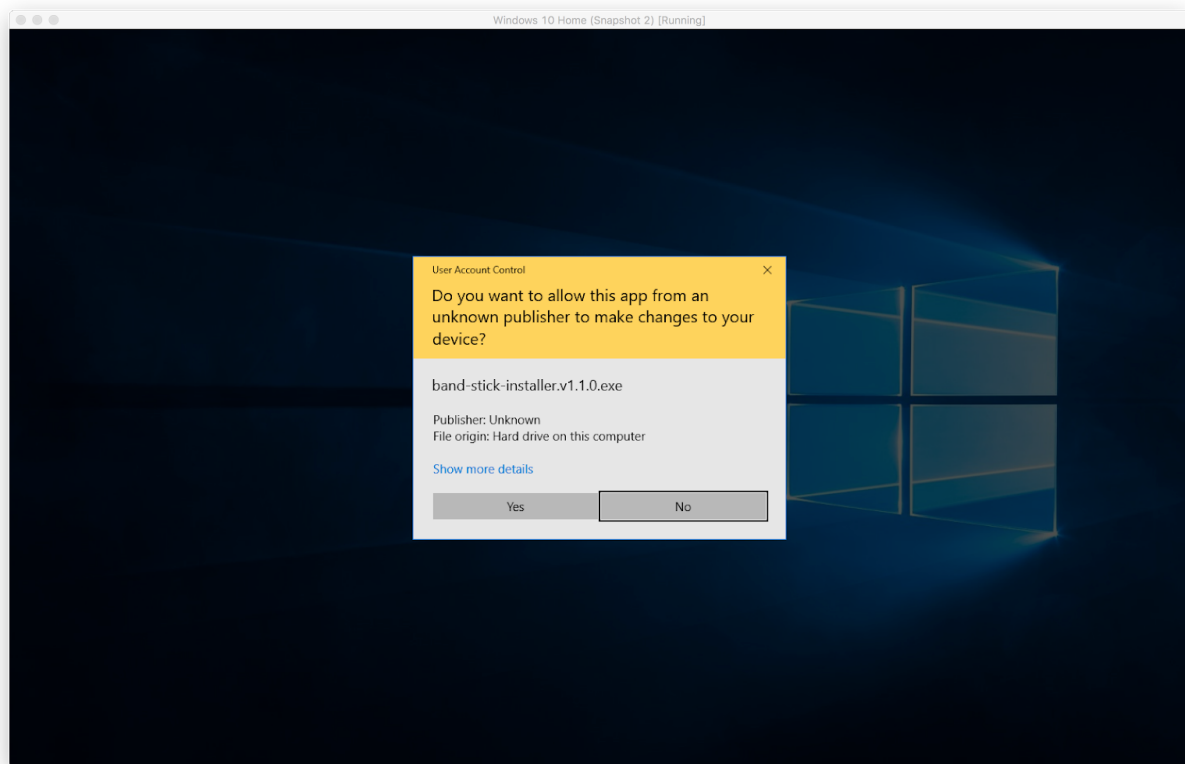
- Additional Installation Options

## Install Band Client

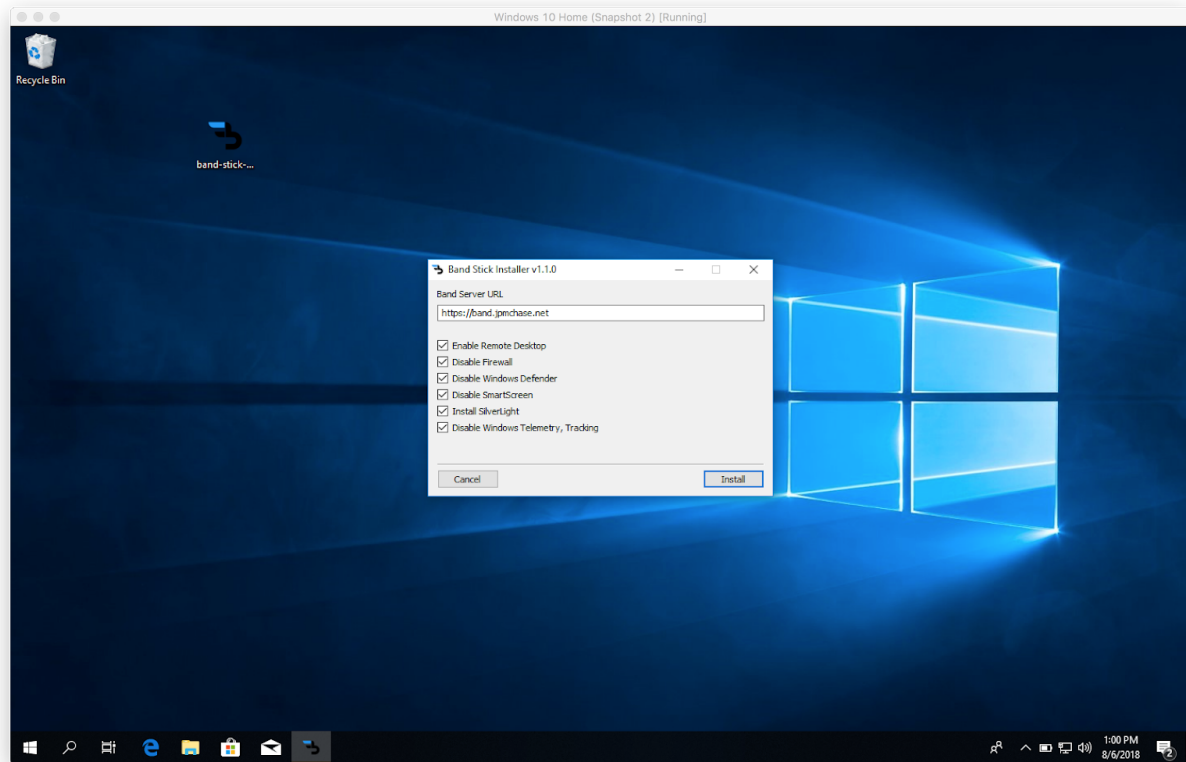
Right click on **band-stick-installer-v1.1.0.exe** and click on **Run as Administrator** to start the installation.



Click on **Yes** button to continue the installation process.



Enter the following details and click on **Install** button to continue the installation process.



## Installation Options

### **Band Server URL**

URL pointing to the Band server, If the Band is hosted on **https://band.example.com** then the Band Server URL would be **https://band.example.com**

### **Enable Remote Desktop**

Check the box to enable Remote Desktop Protocol (RDP) on the stick.

### **Disable Firewall**

Check the box to disable Windows Firewall

### **Disable Windows Defender**

Check the box to disable Windows inbuilt Antivirus (Windows Defender)

### **Disable SmartScreen**

Check box to disable Windows SmartScreen which restricts the execution of unsigned programs.

### **Install Silverlight**

Check the box to install silverlight on the system

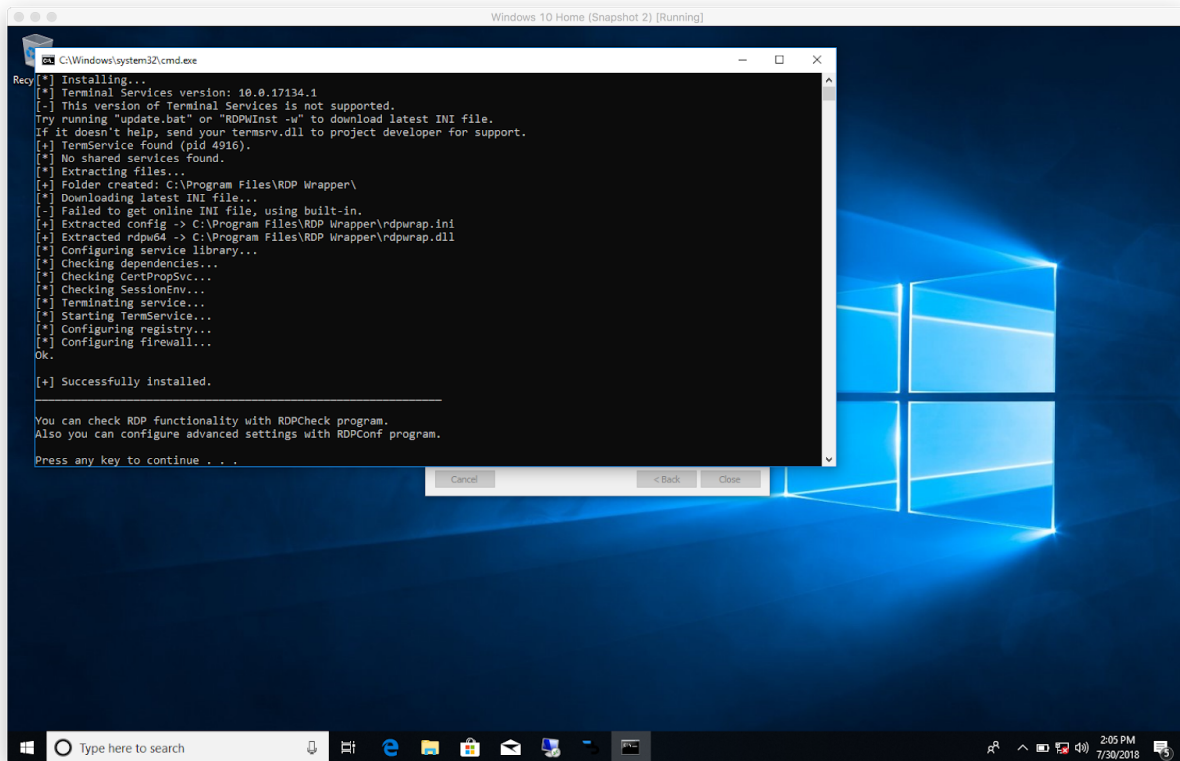
### **Disable Windows Telemetry, Tracking**

Check the box to disable the following,

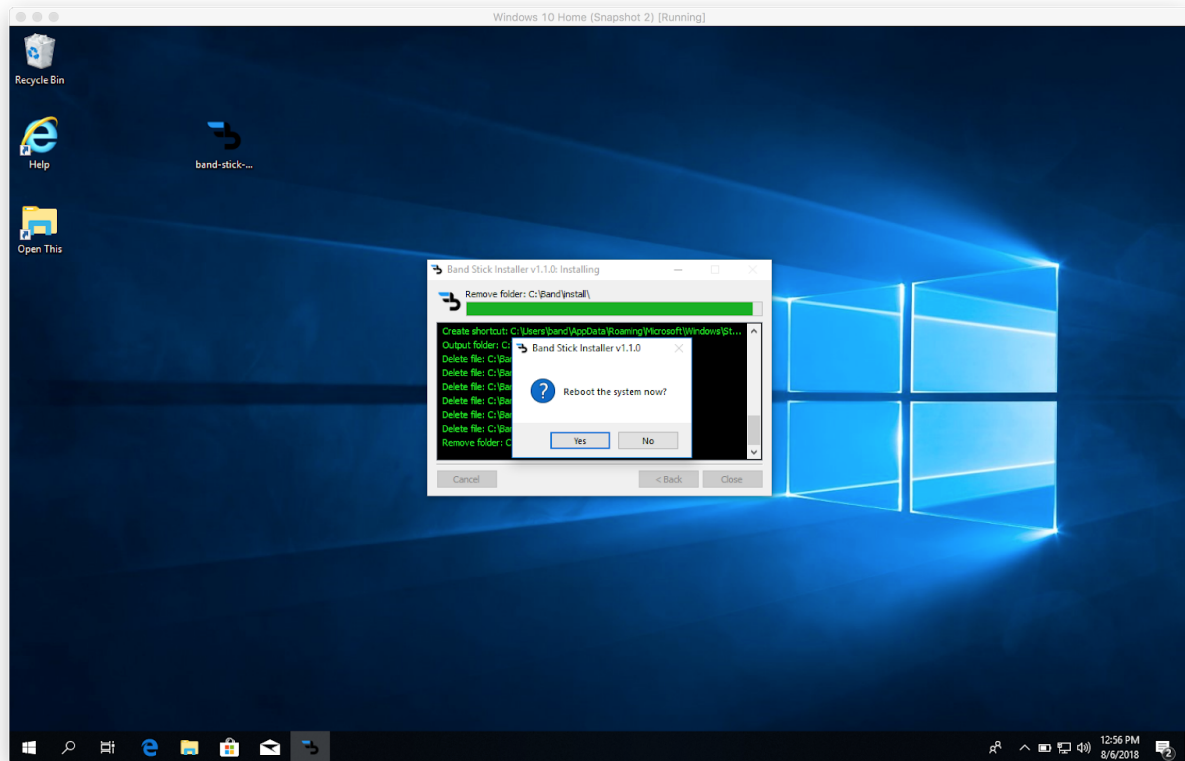
- Telemetry
- WiFi Sense
- Bing web search
- App suggestions
- Cortana
- Activity history
- Location tracking
- Map updates
- Feedback
- Tailored experiences
- Advertising ID
- Error reporting
- WAP push



After clicking the Install button a command prompt will pop up enabling Remote Desktop, After the configuration is completed **Press any key to continue** message will be shown on the screen, Click any button to continue with the installation.

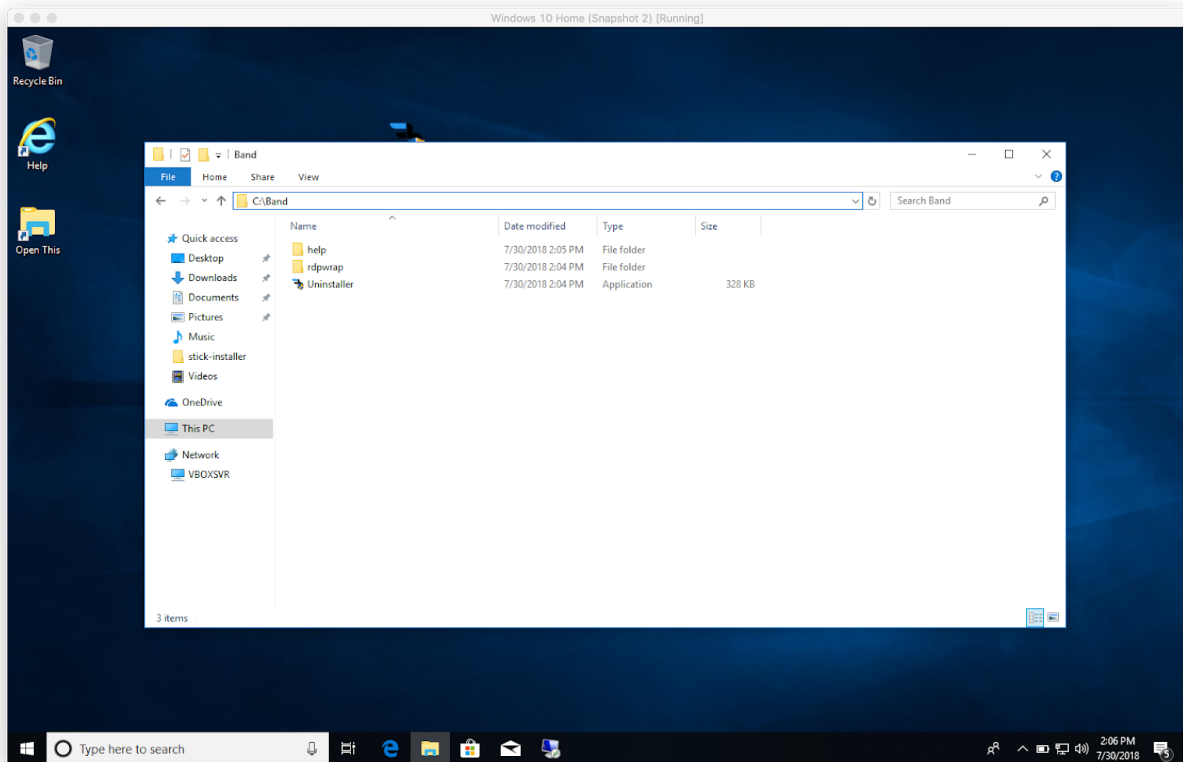


Click on **Yes** button to close the installation dialog and reboot the machine.



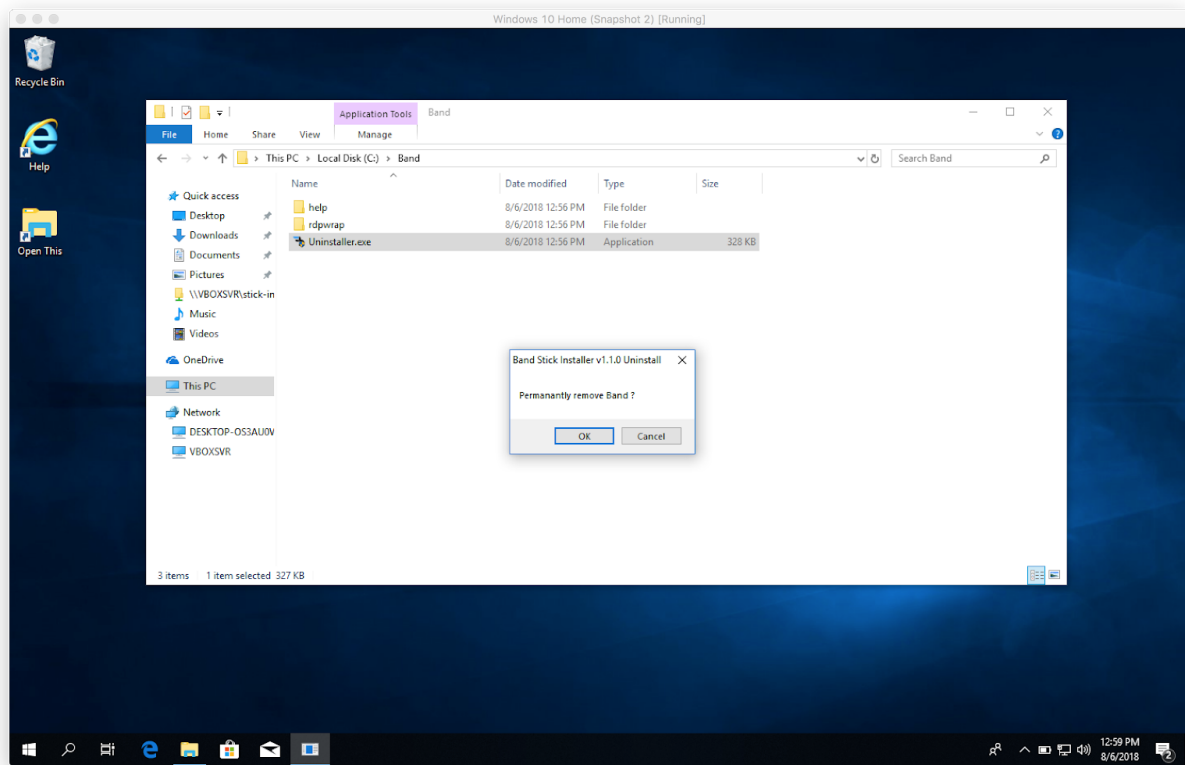
## Uninstall Band Client

In order to uninstall Band Client, Open Windows explorer and navigate to **C:\Band** and run the **Uninstaller.exe** as administrator.

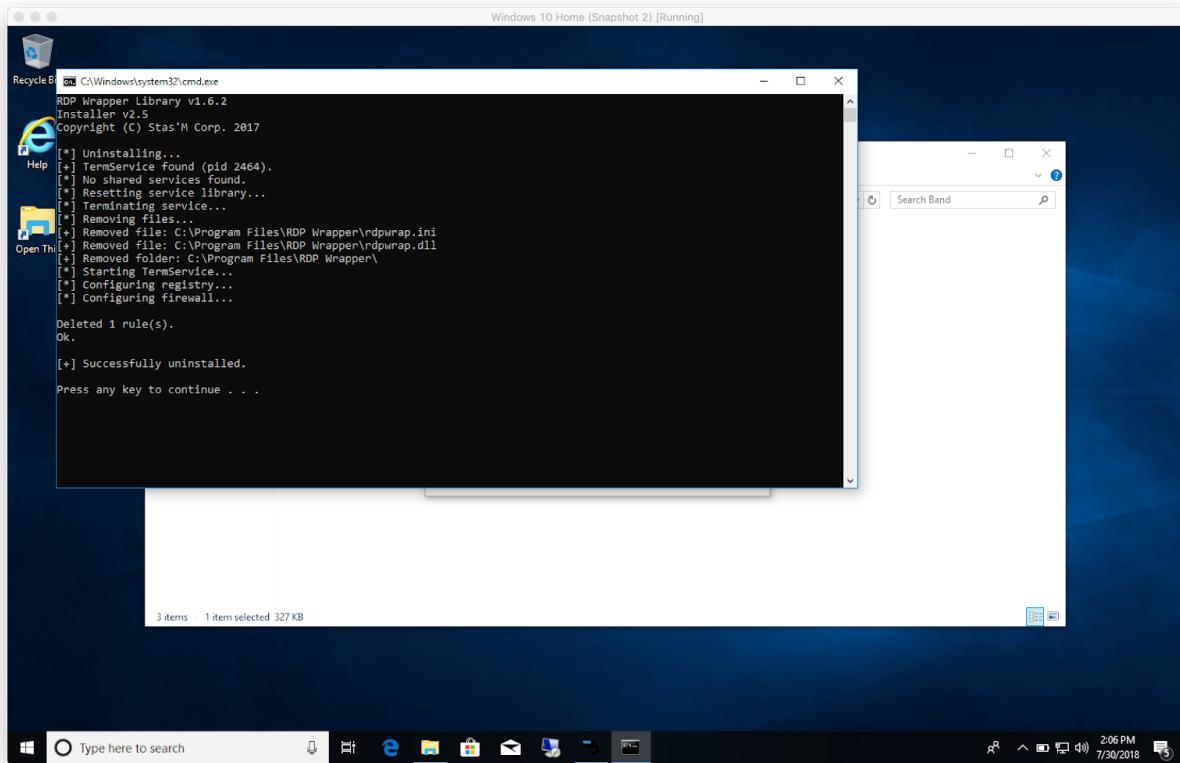


After running the Uninstaller.exe, a confirmation dialog will popup asking for confirmation to remove Band Client from the stick. Click on **Ok** to proceed with uninstallation.

**WARNING** Uninstalling Band Client results in disabling Remote Desktop.



After clicking on Ok, a command prompt will popup. Click on any key when the command prompt shows **Press any key to continue ...**



Click on **Yes** button to close the uninstallation dialog and reboot the machine.

