



Content Gateway Setup Guide

Version 1.3.7

Contents

Copyright Notice	3
Document Revision History	4
Content Gateway	5
Preparations	5
Installer	5

Copyright Notice

No part of this document may be reproduced or transmitted in any form or by any means, electronic or mechanical, for any purpose, without express written permission. Under the law, reproducing includes translating into another language or format.

The software is protected by United States copyright laws and international treaty provision. Therefore, you must treat the software like any other copyrighted material (e.g. a book or sound recording).

Document Revision History

May 31, 2018

- Initial release of documentation

Content Gateway

Preparations

To set up Content Gateway, you will need the following:

- MSSQL or MySQL Database
- SSL Certificates
- Content Gateway Installer

This guide will cover the Content Gateway Installer. Please have the database and SSL Certificates set up beforehand.

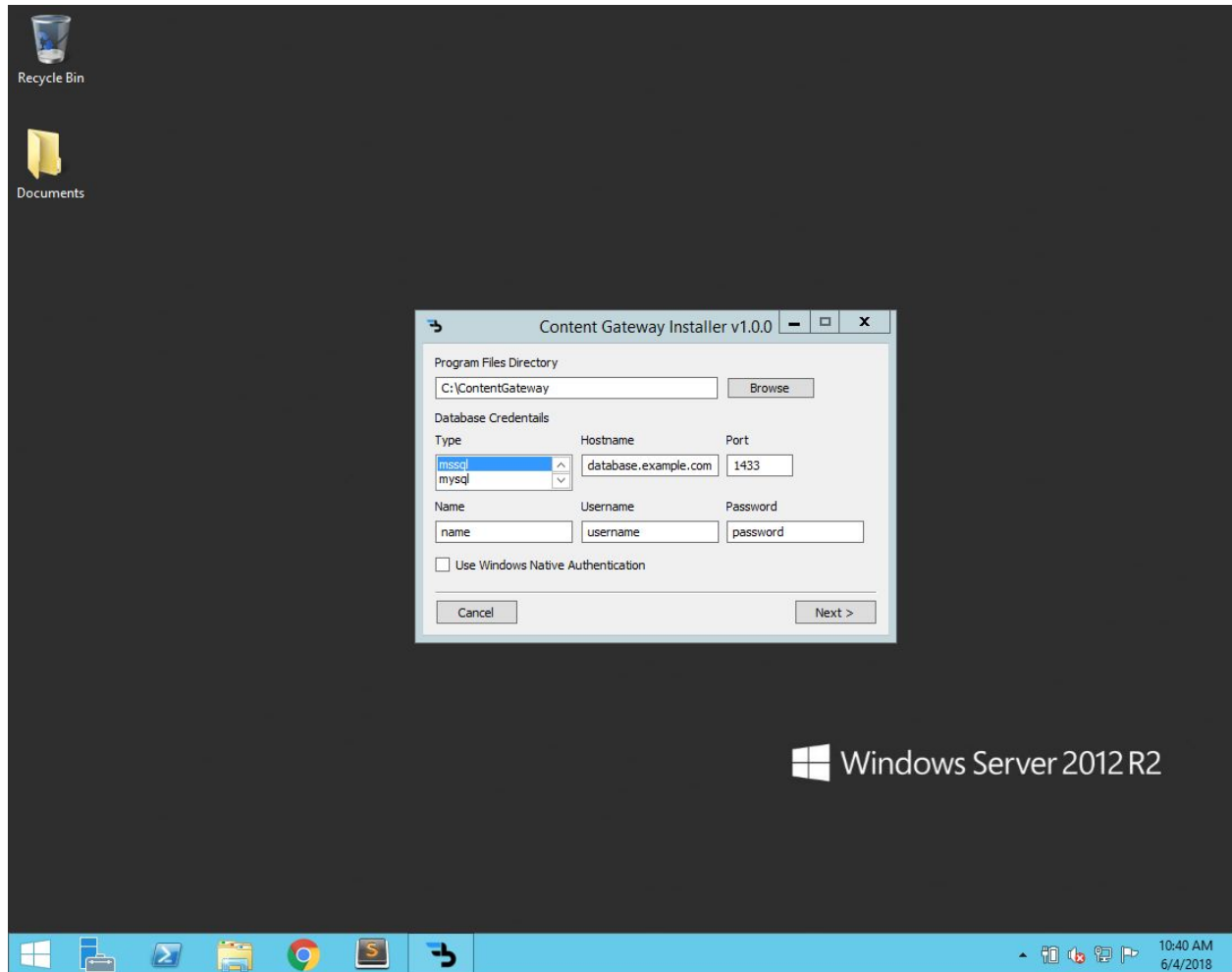
Installer

Run the installer on the Windows machine and follow the steps to complete the installation.

Fill out the following:

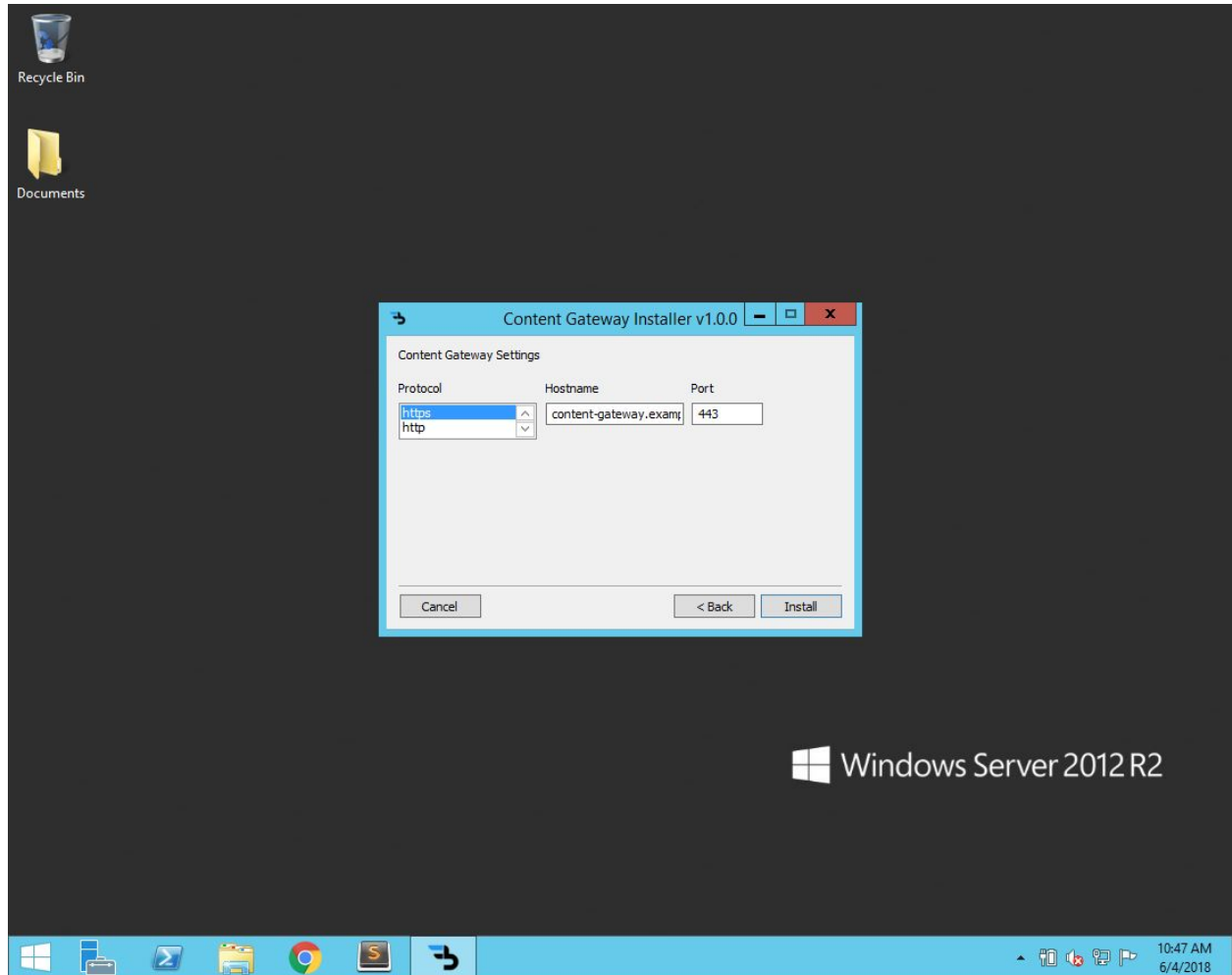
- Program Files Location
 - Create or select the location you want to save Content Gateway's files.
- Database Credentials
 - Database type
 - Hostname
 - Port
 - Name
 - Username
 - Password
- Checkbox to use Windows Native Authentication
 - This will ignore the username and password fields

Click **Next**.

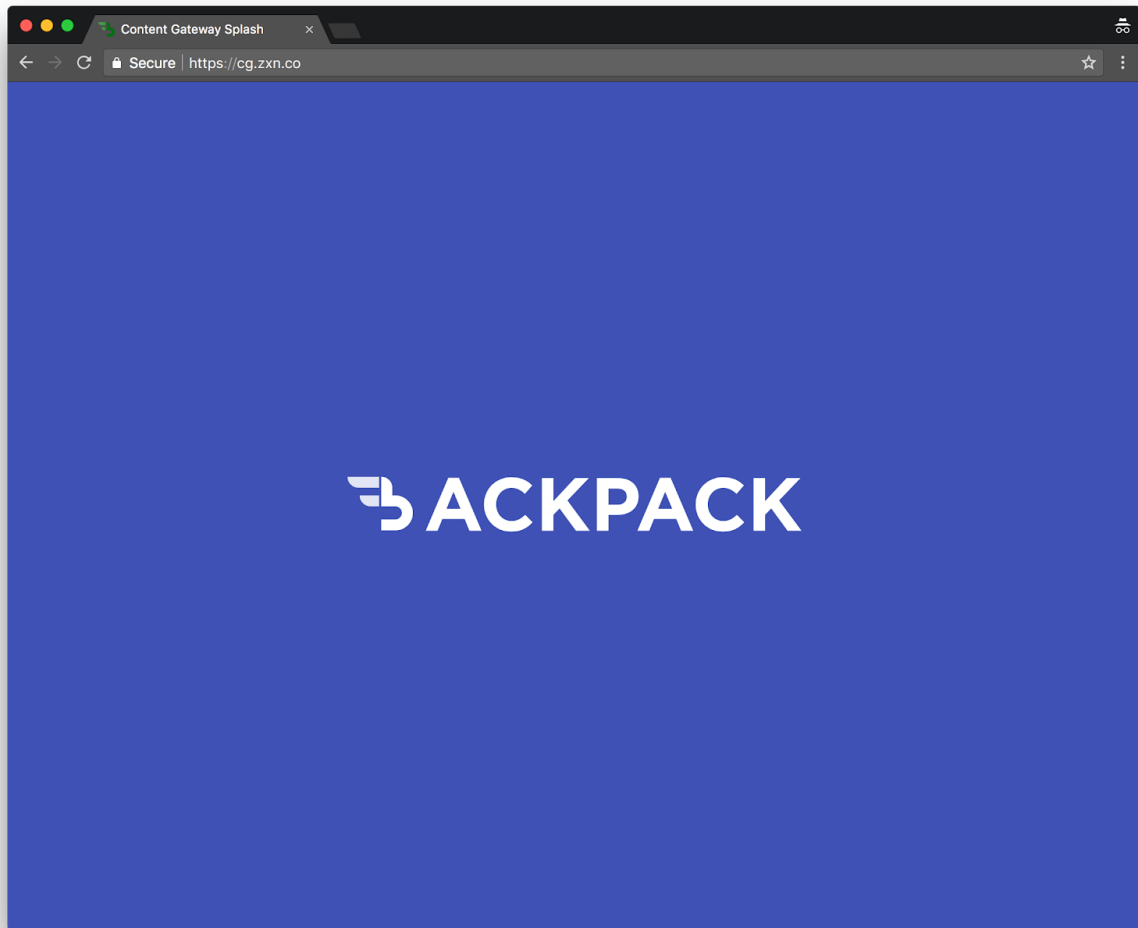


Select the correct protocol (HTTPS), and enter the hostname and port that matches the SSL certificate.

Click **Install**. During the installation, press any key when prompted to do so.



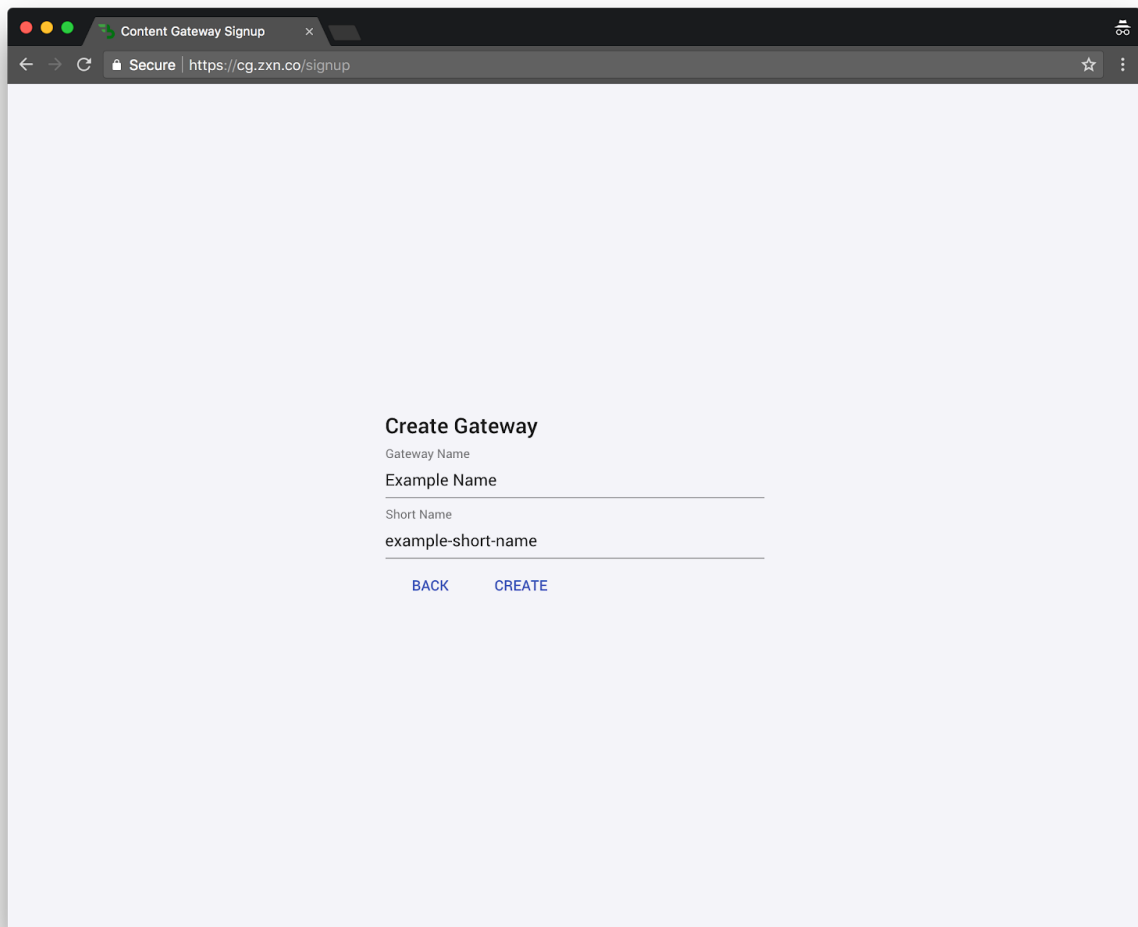
Once the installation is complete, navigate to the Content Gateway URL. The following splash screen should be displayed.



To create a new Content Gateway, navigate to **/signup** to continue. If the Content Gateway web address were **https://content-gateway.example.com**, the address would be **https://content-gateway.example.com/signup**.

Enter a Gateway Name, as well as a short name that is easy to remember.

Click **Create**. You will be redirected to Bridge to complete the Gateway setup.



The screenshot shows a web browser window with the title "Content Gateway Signup". The address bar displays "Secure | https://cg.zxn.co/signup". The main content area has a light blue background and contains the following form:

Create Gateway

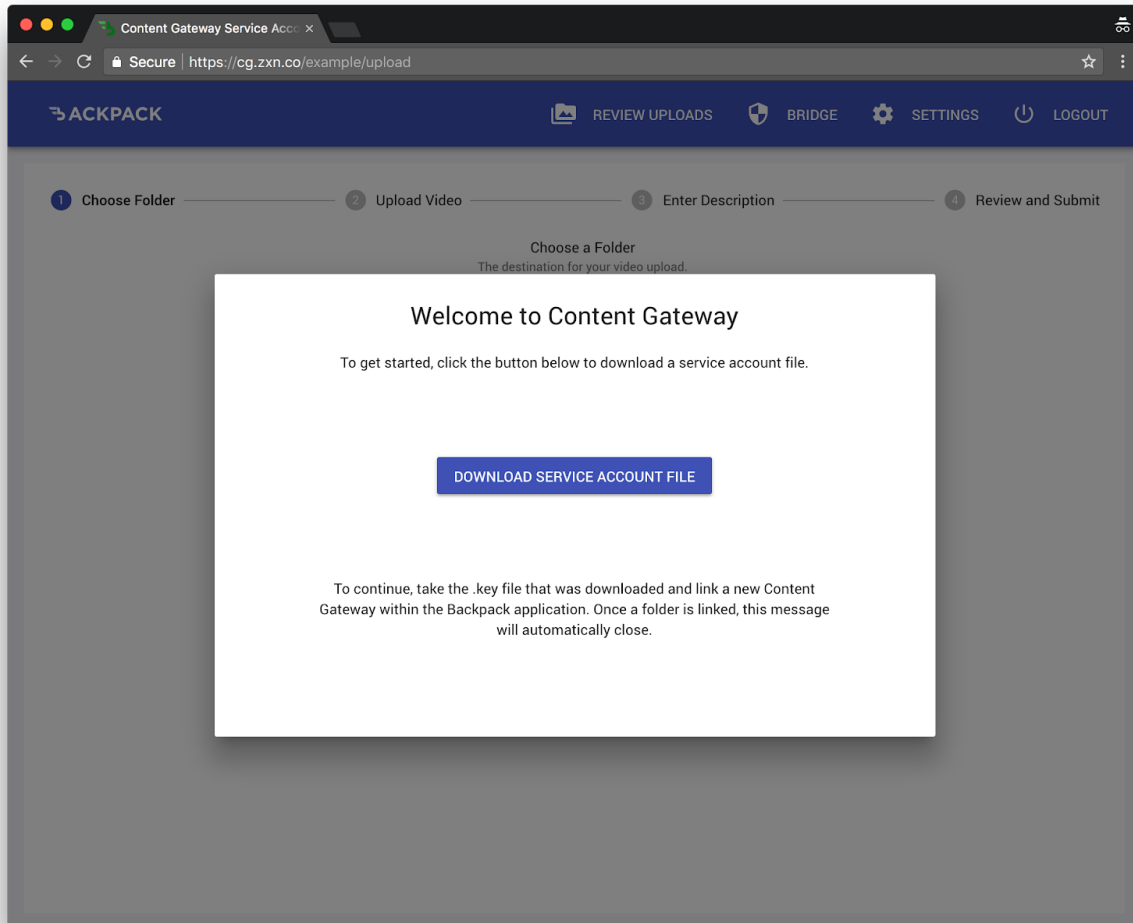
Gateway Name
Example Name

Short Name
example-short-name

[BACK](#) [CREATE](#)

Once an adapter is setup and you are signed in, you'll be redirected back to Content Gateway and prompted by a welcome card to download a service account file.

Click **Download Service Account File**. A service account JSON file titled **service-account.key** will automatically be downloaded to your machine. Please keep this file safe and do not lose it as it cannot be re-downloaded.



The service account JSON file will be used to link this Content Gateway to Backpack.